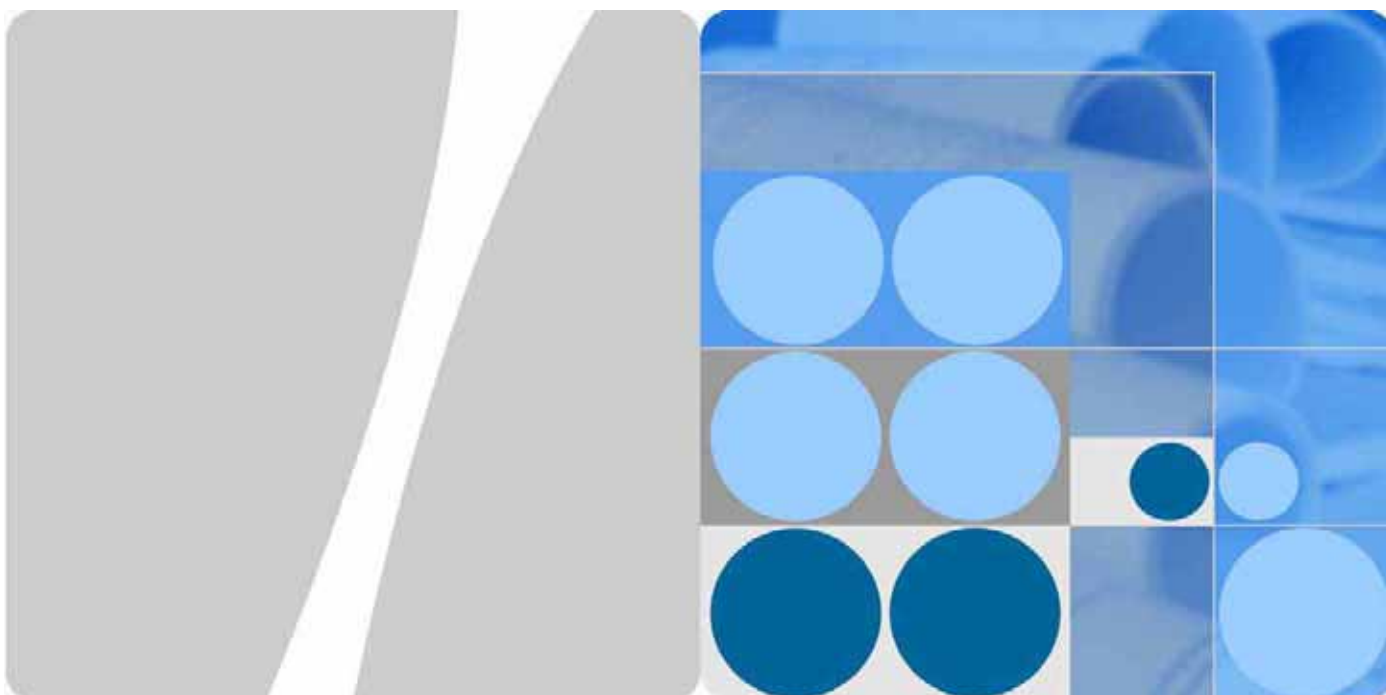


AT Command Interface Specification



EM770W UMTS M2M Wireless Module
V100R001

Issue 18
Date 2009-28-07



intelimax

HSPA Mini PCI Module : EM-770W PCI





Maxon Electronics Australia Pty. Ltd. is proud to distribute the Huawei HSUPA Mini PCI Module EM-770W built to Maxon's specifications.

In keeping with Maxon's dedicated customer support policy, we encourage you to contact us.

TECHNICAL:

Hours of Operation : Monday to Friday 8.30am to 5.30pm*

Telephone: +61 2 8707 3000

Facsimile: +61 2 8707 3001

Email: support@maxon.com.au

* Public holidays excluded

SALES:

Hours of Operation: Monday to Friday 8.30am to 5.30pm*

Telephone: +61 2 8707 3000

Facsimile: +61 2 8707 3001

Email: sales@maxon.com.au

* Public holidays excluded

WEBSITE: www.maxon.com.au

Maxon has also added for the benefit of developers and integrators, a forum on our website that can be accessed to discuss this product and/or technical matters in relation to your applications. All questions raised within this portal will be answered.

FORUM: www.maxon.com.au/forum

ADDRESS:

Maxon Electronics Australia Pty Ltd

36a Gibson Avenue, Padstow

Sydney, NSW, Australia 2211

POSTAL ADDRESS

Maxon Electronics Australia Pty Ltd

Po Box 1, Revesby North,

Sydney, NSW Australia 2212



RF EXPOSURE & ELECTRICAL SAFETY COMPLIANCE

The use of this device in any other type of host configuration may not comply with the RF exposure requirements and should be avoided. During operation, a 20 cm separation distance should be maintained between the antenna, whether extended or retracted, and the user's/bystander's body (excluding hands, wrists, feet, and ankles) to ensure RF exposure compliance. The modem is not designed for, nor intended to be, used in applications within 20 cm (8 inches) of the body of the user. Continued compliance of the equipment relies upon it being used with an AS/NZS 60950.1 approved SELV power supply.

CAUTION

Change or modification without the express consent of Maxon Electronics Australia Pty. Ltd. voids the user's authority to use the equipment. These limits are designed to provide reasonable protection against harmful interference in an appropriate installation. The modem is a transmitting device with similar output power to a mobile phone. This equipment generates, uses, and can radiate radio frequency energy and, if not used in accordance with instructions, can cause harmful radiation to radio communication. Use only the supplied or an approved antenna. Unauthorized antennas, modifications, or attachments could impair call quality, damage the device, or result in violation of RF exposure regulations.

However, there is no guarantee that interference will not occur in a particular installation. If the equipment does cause harmful interference in radio and television reception, which can be determined by turning the equipment on and off, the user is encouraged to try to correct the interference by one or more of the following measures:

- Re-orient or relocate the receiving radio or TV antenna
- Increase the separation distance between the equipment and the receiver
- Contact Maxon Australia Technical Support for assistance.



General Safety

RF Interference Issues

Avoid possible radio frequency (RF) interference by carefully following the safety guidelines below.

- Switch OFF the Modem when in an aircraft. The use of cellular telephones in aircraft is illegal. It may endanger the operation of the aircraft and/or disrupt the cellular network. Failure to observe this instruction may lead to suspension or denial of cellular services to the offender, legal action, or both.
- Switch OFF the Modem in the vicinity of gasoline or diesel fuel pumps or before filling a vehicle with fuel.
- Switch OFF the Modem in hospitals and any other place where medical equipment may be in use.
- Respect restrictions on the use of radio equipment in fuel depots, chemical plants, or in areas of blasting operations.
- There may be a hazard associated with the operation of your Modem in the vicinity of inadequately protected personal medical devices such as hearing aids and pacemakers. Please consult the manufacturers of the medical device to determine if it is adequately protected.
- Operation of the Modem in the vicinity of other electronic equipment may cause interference if the equipment is inadequately protected. Observe any warning signs and manufacturers' recommendations.
- The modem contains sensitive electronic circuitry. Do not expose the modem to any liquids, high temperatures or shock. The modem is not waterproof. Please keep it dry and store it in a cool, dry place.
- Only use original accessories or accessories that are authorized by the manufacturer. Using unauthorized accessories may affect your modem's performance, damage your modem and violate related national regulations.
- Always handle the modem with care. There are no user serviceable parts inside the modem. Unauthorized dismantling or repair of the modem will void the warranty.

Vehicle Safety

- Do not use the Modem while driving.
- Respect national regulations on the use of cellular telephones in vehicles. Road safety always comes first.
- If incorrectly installed in a vehicle, the operation of the Modem could interfere with the correct functioning of vehicle electronics. To avoid such problems, be sure that the installation has been performed by qualified personnel.

Verification of the protection of vehicle electronics should be part of the installation.

Safety Notice:



NOTES

The user is cautioned that changes or modifications not expressly approved by Maxon Australia could void the warranty.

POTENTIALLY UNSAFE AREAS

Posted facilities: Turn off this device in any facility or area when posted notices require you to do so.

Blasting areas: Turn off your device where blasting is in progress. Observe restrictions and follow any regulations or rules.

Potentially explosive atmospheres: Turn off your device when you are in any area with a potentially explosive atmosphere. Obey all signs and instructions. Sparks in such areas could cause an explosion or fire, resulting in bodily injury or death.

Areas with a potentially explosive atmosphere are often but not always clearly marked.

They include:

- fuelling areas such as gas or petrol stations
- Below deck on boats
- Transfer or storage facilities for fuel or chemicals
- Vehicles using liquefied petroleum gas, such as propane or butane
- Areas when the air contains chemicals or particles such as grain, dust or metal powders
- Avoid using the modem in areas that emit electromagnetic waves or enclosed metallic structures e.g. lifts.
- Any other area where you would normally be advised to turn off your engine

About This Document

Author

Prepared by	Yuan Kangqiang, Zhu Di, Dongwenhao, Ma Zhaoyang, Yang Pu, Xing Jishan	Date	2008-10-22
Reviewed by	Cao Hepu, Liu Kun, Pei Na, Yuan Kangqiang, Zhu Di, Dongwenhao, Ma Zhaoyang, Yang Pu, Xing Jishan	Date	2009-06-22
Approved by	Yang Jie	Date	2009-06-22

Summary

Keywords: UMTS, Module, WCDMA, GPRS, GSM

Abstract: This Document describes the AT command-based communication interface between TE and MS of Huawei UMTS Module. The interface can implement the functions such as voice call, SMS, telephone service, supplementary service, TCP, UDP and network setting.

This document includes:

Chapter	Details
1 Scope	Describes interface design principles and change principles
2 Interface Introduction	Describes interface simply
3 Query of Basic Information and Description of Set Interface	Describes AT command of basic information querying and setting
4 SMS Interface Description	Describes AT command of SMS
5 Description of Security Setting Interface	Describes AT command of security setting

6 System Setting Interface Description	Describes AT command of system setting
7 Phonebook Service Interface Description	Describes AT command of phonebook service
8 Network Service Interface Description	Describes AT command of network service
9 Data Service Interface Description	Describes AT command of data service
10 TCP/UDP Service Interface Description	Describes AT command of TCPUDP service
11 Voicemail Service Interface Description	Describes AT command of voicemail service
12 Overall Design Constraints	Describes overall design constraints
13 Software Quality Attributes	Describes software quality attributes
14 Dependencies	Describes dependencies
15 Feasibility Analysis	Describes feasibility analysis
16 Issues To Be Determined	Describes issues to be determined
17 Appendixes	Appendixes

History

Issue	Details	Date	Author	Approved by
01	Creation	2008-10-22	Yuankangqiang	Yang Jie
02	Modify IP STACK commands	2008-12-09	Zhu Di	Yuankangqiang
03	Add %IPENTRANS command	2008-12-20	Zhu Di	Yuankangqiang
04	Add %NWINFO, %RESET, %AUTORESET, %IPCHOSTPN, %IPCFL, %IPCTRIP and STK commands	2009-01-10	Zhu Di	Yuankangqiang
05	1. Add &W, Z, &F, +MMC, %IPCGDCONT, %IPQCPDPP commands 2. Modify +CNMI %NWINFO command	2009-01-23	Yang Pu	Zhu Di
06	1.Modify &W, Z, &F commands 2.Add %rssi command	2009-02-21	Xing Jishan	Zhu Di
07	1.Add AT+MMC command 2.Modify %IPQCPDPP command	2009-02-26	Yang Pu	Zhu Di
08	Modify &W command	2009-03-04	DongWenhao	Zhu Di
09	1.Modify %CONINFO command 2.Add %IPCUTOCON command	2009-03-12	Zhu Di	Yuankangqiang
10	1.Add +ICF command 2.Modify &C command	2009-03-25	Zhu Di	Yuankangqiang
11	Add AT%IPNOTIF command	2009-04-03	Zhu Di	Yuankangqiang

Issue	Details	Date	Author	Approved by
12	1.Modify &F command 2.Modify %IPCFL command 3.Modify %IPNOTIF command 4.Modify %NWINFO and %RSSI commands for RSCP and RSSI explanations.	2009-04-15	DongWenhao	Zhu Di
13	1.Modify %IPQCPDPP command 2.Modify %IPCFL command 3.Add +CNMI=1,5 command 4.Modify %SYSCFG command 5.Modify %NWINFO command	2009-04-29	DongWenhao	Zhu Di
14	Add +IFC command	2009-05-12	Zhu Di	Yuankangqiang
15	1.Add Remote SMS Interface Description 2.Add %SLEEPMODE command Description	2009-05-22	MaZhaoyang	Yuankangqiang
16	Add %AUTODELSMS command Description	2009-05-27	Zhu Di	Yuankangqiang
17	Add +IPR command Description	2009-06-02	MaZhaoyang	Yuankangqiang
18	Modify %IPCLOSE command Description	2009-06-20	MaZhaoyang	Yuankangqiang

Contents

Author	3
Summary	3
History	5
1 Scope	22
1.1 Terminal Display	22
1.1.1 Interface Overview	22
1.2 Interface Design Principles	23
1.3 Interface Change Principles	24
2 Interface Introduction	25
3 Query of Basic Information and Description of Set Interface	26
3.1 Terminal error report command +CMEE	26
3.1.1 Command Syntax	26
3.1.2 Description	26
3.1.3 Defined Values	26
3.2 Echo command E	27
3.2.1 Command Syntax	27
3.2.2 Description	27
3.2.3 Defined Values	27
3.3 Command line carriage return character S3	27
3.3.1 Command Syntax	27
3.3.2 Description	27
3.3.3 Defined Values	27
3.4 Response format character S4	28
3.4.1 Command Syntax	28
3.4.2 Description	28
3.4.3 Defined Values	28
3.5 ME response format command V	28
3.5.1 Command Syntax	28
3.5.2 Description	28
3.5.3 Defined Values	29
3.6 Backspace character S5	29
3.6.1 Command Syntax	29
3.6.2 Description	29
3.6.3 Defined Values	29
3.7 RSSI query function command +CSQ	29
3.7.1 Command Syntax	29
3.7.2 Description	30
3.7.3 Defined Values	30
3.8 RSSI level query function command + CSQLVL	30

3.8.1 Command Syntax	30
3.8.2 Interface Description.....	30
3.8.3 Defined Values	30
3.9 Signal %RSSI.....	31
3.9.1 Command Syntax	31
3.9.2 Description.....	31
3.9.3 Defined Values	31
3.10 Operation mode setting command +CFUN.....	31
3.10.1 Command Syntax.....	31
3.10.2 Description.....	31
3.10.3 Defined Values	32
3.11 Manufacturer information query command +CGMI.....	32
3.11.1 Command Syntax	32
3.11.2 Description.....	32
3.11.3 Defined Value.....	32
3.11.4 Informative Examples	32
3.12 Software version number query command +CGMR	32
3.12.1 Command Syntax.....	33
3.12.2 Description.....	33
3.12.3 Defined Value	33
3.13 IMSI query command +CIMI	33
3.13.1 Command Syntax.....	33
3.13.2 Interface Description.....	33
3.13.3 Defined Value	33
3.13.4 Informative Examples.....	33
3.14 IMEI query command +CGSN	34
3.14.1 Command Syntax.....	34
3.14.2 Interface Description.....	34
3.14.3 Defined Value	34
3.14.4 Informative Examples.....	34
3.15 Loudspeaker volume level +CLVL	34
3.15.1 Command Syntax.....	34
3.15.2 Description.....	35
3.15.3 Defined values.....	35
3.16 Mute control +CMUT	35
3.16.1 command syntax	35
3.16.2 Description.....	35
3.16.3 Defined values.....	35
3.17 Shake Hand between MS and TE %HS.....	35
3.17.1 command syntax	35
3.17.2 Description.....	36
3.17.3 Defined values.....	36

3.18 Repeat Last Command A/	37
3.18.1 Command Syntax	37
3.18.2 Description	37
3.18.3 Defined Value	37
3.18.4 Example	37
3.19 SPN read function command %SPN	37
3.19.1 Command Syntax	37
3.19.2 Description	37
3.19.3 Defined Values	38
3.19.4 Informative Examples	38
3.20 Hardware version number query function %HWVER	38
3.20.1 Command Syntax	38
3.20.2 Description	38
3.20.3 Defined Value	38
3.21 Hardware version number query function %HVER	39
3.21.1 Command Syntax	39
3.21.2 Description	39
3.21.3 Defined Value	39
3.22 Network information query %NWINFO	39
3.22.1 Command Syntax	39
3.22.2 Interface Description	39
3.22.3 Defined Values	39
3.23 Module delay resetting %RESET	40
3.23.1 Command Syntax	40
3.23.2 Interface Description	41
3.23.3 Defined Values	41
3.24 Module automatic resetting %AUTORESET	41
3.24.1 Command Syntax	41
3.24.2 Interface Description	41
3.24.3 Defined Values	41
3.25 Return current time of the module +CCLK	42
3.25.1 Command Syntax	42
3.25.2 Interface Description	42
3.25.3 Defined Values	42
3.26 Store user settings &W	42
3.26.1 Command Syntax	42
3.26.2 Interface Description	42
3.27 Resume user settings Z	43
3.27.1 Command Syntax	43
3.27.2 Interface Description	43
3.28 Set to factory defined configuration &F	44
3.28.1 Command Syntax	44

3.28.2 Interface Description.....	44
3.29 Set Data Carrier Detect (DCD) Line mode &C.....	45
3.29.1 Command Syntax.....	45
3.29.2 Interface Description.....	45
3.29.3 Defined Values	45
3.30 Set circuit Data Terminal Ready (DTR) function mode &D	46
3.30.1 Command Syntax.....	46
3.30.2 Interface Description.....	46
3.30.3 Defined Values	46
3.31 TE2-MT2 Character Framing +ICF	46
3.31.1 command syntax	46
3.31.2 Description.....	47
3.31.3 Defined values.....	47
3.32 TE2-MT2 Fixed Data Rate +IPR	47
3.32.1 command syntax	47
3.32.2 Description.....	48
3.32.3 Defined values.....	48
3.33 TE-TA local flow control +IFC	48
3.33.1 command syntax	48
3.33.2 Description.....	48
3.33.3 Defined values.....	49
3.34 Result Code Suppression Q.....	49
3.34.1 Command Syntax.....	49
3.34.2 Interface Description.....	49
3.34.3 Defined Values	49
3.35 Result Code Selection and Call Progress Monitoring Control X.....	50
3.35.1 Command Syntax.....	50
3.35.2 Interface Description.....	50
3.35.3 Defined Values	50
3.36 Module Boot-up indication.....	50
3.36.1 Command Syntax.....	50
3.36.2 Interface Description.....	50
3.37 Enable Sleep Mode %SLEEPMODE	51
3.37.1 Command Syntax.....	51
3.37.2 Description.....	51
3.37.3 Defined Values	51
4 Call control commands and methods	52
4.1 Originate Call D.....	52
4.1.1 Command Syntax.....	52
4.1.2 Description.....	52
4.1.3 Defined Values	52

4.2 Answer Call A	52
4.2.1 Command Syntax	52
4.2.2 Description	52
4.3 Hangup call +CHUP	53
4.3.1 Command Syntax	53
4.3.2 Description	53
4.4 Incoming Call RING	53
4.4.1 Command Syntax	53
4.4.2 Description	53
4.5 Calling line identification presentation +CLIP	53
4.5.1 Command Syntax	53
4.5.2 Description	53
4.5.3 Defined Values	54
4.6 Unsolicited report of CLIP +CLIP	54
4.6.1 Command Syntax	54
4.6.2 Description	54
4.6.3 Defined Values	54
4.6.4 Example	54
4.7 List current calls +CLCC	55
4.7.1 Command Syntax	55
4.7.2 Description	55
4.7.3 Defined Values	55
4.8 Auto Answer % AUTOANSWER	56
4.8.1 Command Syntax	56
4.8.2 Description	56
4.8.3 Defined Values	56
5 SMS Interface Description	57
5.1 Select the SMS type +CSMS	57
5.1.1 Command Syntax	57
5.1.2 Description	57
5.1.3 Defined Values	57
5.2 Set message format +CMGF	58
5.2.1 Command Syntax	58
5.2.2 Description	58
5.2.3 Defined Values	58
5.3 Message arrival indication +CMTI	58
5.3.1 Command Syntax	58
5.3.2 Description	58
5.3.3 Defined Values	59
5.4 Indication of new message reported directly +CMT	59
5.4.1 Command Syntax	59

5.4.2 Description.....	59
5.4.3 Defined Values	59
5.5 Newly received message state report +CDSI	60
5.5.1 Command Syntax	60
5.5.2 Description.....	60
5.5.3 Defined Values	60
5.6 Indication of new message state report reported directly +CDS.....	60
5.6.1 Command Syntax	60
5.6.2 Description.....	60
5.6.3 Defined Values	61
5.7 New message notification setting +CNMI	62
5.7.1 Command Syntax	62
5.7.2 Description.....	62
5.7.3 Defined Values	63
5.7.4 Informative Examples.....	65
5.8 Delete Message +CMGD	65
5.8.1 Command Syntax	66
5.8.2 Description.....	66
5.8.3 Defined Values	66
5.9 New Message Acknowledgement to +CNMA	66
5.9.1 Command Syntax	66
5.9.2 Description.....	67
5.9.3 Defined Values	67
5.10 Message storage selection +CPMS.....	71
5.10.1 Command Syntax.....	71
5.10.2 Description.....	71
5.10.3 Defined Values	72
5.11 Reporting message storage media being full %SMMEMFULL.....	72
5.11.1 Command Syntax	73
5.11.2 Description.....	73
5.11.3 Defined Values.....	73
5.12 SMSC number command +CSCA.....	73
5.12.1 Command Syntax.....	73
5.12.2 Description.....	73
5.12.3 Defined Values	73
5.13 Message sending +CMGS	74
5.13.1 Command Syntax.....	74
5.13.2 Interface Description.....	74
5.13.3 Defined Values	74
5.13.4 Examples.....	80
5.14 Message storage command +CMGW.....	81
5.14.1 Command Syntax.....	81

5.14.2 Interface Description.....	82
5.14.3 Defined Values	82
5.15 Message list command +CMGL.....	82
5.15.1 Command Syntax	82
5.15.2 Description.....	83
5.15.3 Defined Values	83
5.16 Read a message +CMGR.....	85
5.16.1 Command Syntax	85
5.16.2 Description.....	85
5.16.3 Defined Values	85
5.17 Message bearer domain command +CGSMS	85
5.17.1 Command Syntax.....	86
5.17.2 Description.....	86
5.17.3 Defined Values	86
5.18 More Messages to Send +CMMS	86
5.18.1 Command Syntax	86
5.18.2 Description.....	86
5.18.3 Defined Values	87
5.19 Send Message SMS MO +MMC.....	87
5.19.1 Command Syntax	87
5.19.2 Description.....	87
5.19.3 Defined Values	87
5.20 Received Message Reported Directly.....	87
5.20.1 Command Syntax.....	87
5.20.2 Description.....	88
5.20.3 Defined Values	88
5.21 Auto delete SMS control command %AUODELSMS.....	88
5.21.1 Command Syntax	88
5.21.2 Description.....	88
5.21.3 Defined Values	88
6 Supplementary service commands.....	90
6.1 Call forwarding number and conditions +CCFC	90
6.1.1 Command Syntax	90
6.1.2 Description.....	90
6.1.3 Defined Values	90
6.2 Call waiting +CCWA.....	91
6.2.1 Command Syntax	91
6.2.2 Description.....	92
6.2.3 Defined Values	92
6.3 Identification Presentation of Call waiting +CCWA	93
6.3.1 Command Syntax	93

6.3.2 Description.....	93
6.3.3 Defined Values	93
6.4 Call related supplementary services +CHLD	94
6.4.1 Command Syntax	94
6.4.2 Description.....	94
6.4.3 Defined Values	94
6.5 Configure Supplementary service notifications +CSSN.....	95
6.5.1 Command Syntax	95
6.5.2 Description.....	95
6.5.3 Defined Values	95
6.6 Supplementary service notifications +CSSU	95
6.6.1 Command Syntax	95
6.6.2 Description.....	96
6.6.3 Defined Values	96
6.7 Unstructured supplementary service data +CUSD	96
6.7.1 Command Syntax	96
6.7.2 Description.....	96
6.7.3 Defined Values	97
6.8 Unsolicited report of CUSD +CUSD.....	97
6.8.1 Command Syntax	97
6.8.2 Description.....	97
6.8.3 Defined Values	98
7 Serializer Interface Description	99
7.1 Diag port setting %DIAGPORTSEL	99
7.1.1 Command Syntax	99
7.1.2 Description.....	99
7.1.3 Defined Values	99
8 Description of Security Setting Interface.....	100
8.1 PIN password modifying +CPWD	100
8.1.1 Command Syntax	100
8.1.2 Description.....	100
8.1.3 Defined Values	100
8.2 PIN enabling and query function +CLCK	101
8.2.1 Command Syntax	101
8.2.2 Description.....	101
8.2.3 Defined Values	101
8.3 PIN management command +CPIN.....	102
8.3.1 Command Syntax	102
8.3.2 Description.....	102
8.3.3 Defined Values	102
8.4 PIN management command %CPIN (new feature)	102

8.4.1 Command Syntax	103
8.4.2 Description.....	103
8.4.3 Defined Values	103
9 Data Service Interface Description.....	105
9.1 PDP environment setting command +CGDCONT	105
9.1.1 Command Syntax	105
9.1.2 Description.....	105
9.1.3 Defined Values	106
9.1.4 Informative Examples.....	106
9.2 DS traffic reset %DSFLOWCLR.....	108
9.2.1 Command Syntax	108
9.2.2 Description.....	108
9.3 DS traffic query %DSFLOWQRY	108
9.3.1 Command Syntax	108
9.3.2 Description.....	108
9.3.3 Defined Values	108
9.4 DS traffic reporting %DSFLOWRPT	109
9.4.1 Command Syntax	109
9.4.2 Description.....	109
9.4.3 Defined Values	109
9.5 3G Quality of Service Profile (Negotiated) +CGEQNEG	110
9.5.1 Command Syntax	110
9.5.2 Description.....	111
9.5.3 Defined values.....	111
10 Phonebook Service Interface Description	113
10.1 Phonebook memory selection +CPBS.....	113
10.1.1 Command Syntax.....	113
10.1.2 Description.....	113
10.1.3 Defined Values	113
10.2 Phonebook reading %CPBR.....	114
10.2.1 Command Syntax.....	114
10.2.2 Description.....	114
10.2.3 Defined Values	114
10.3 Phonebook writing %CPBW.....	115
10.3.1 Command Syntax	115
10.3.2 Description.....	115
10.3.3 Defined Values	116
10.3.4 Informative Examples	116
11 System Setting Interface Description.....	117
11.1 RSSI change indication %RSSI	117
11.1.1 Command Syntax	117

11.1.2 Description	117
11.1.3 Defined Values	117
11.2 Unsolicited report control command %CURC	117
11.2.1 Command Syntax	117
11.2.2 Interface Description	118
11.2.3 Defined Values	118
11.3 Service state change indication %SRVST	118
11.3.1 Command Syntax	118
11.3.2 Description	118
11.3.3 Defined Values	118
11.4 SIM state change indication %SIMST	119
11.4.1 Command Syntax	119
11.4.2 Interface Description	119
11.4.3 Defined Values	119
11.5 System mode change event indication %MODE	119
11.5.1 Command Syntax	119
11.5.2 Interface Description	119
11.5.3 Defined Values	119
11.6 System information query %SYSINFO	120
11.6.1 Command Syntax	120
11.6.2 Interface Description	120
11.6.3 Defined Values	120
11.7 System configuration reference setting %SYSCFG	122
11.7.1 Command Syntax	122
11.7.2 Description	122
11.7.3 Defined Values	122
11.8 Product model ID command +CGMM/+GMM	123
11.8.1 Command Syntax	123
11.8.2 Interface Description	123
11.8.3 Defined Value	123
12 Data Service Interface Description	125
12.1 Network registration +CREG	125
12.1.1 Command Syntax	125
12.1.2 Interface Description	125
12.1.3 Defined Values	125
12.2 Network registration +CGREG	126
12.2.1 Command Syntax	126
12.2.2 Interface Description	126
12.2.3 Defined Values	126
12.3 Operator selection +COPS	127
12.3.1 Command Syntax	127

12.3.2 Interface Description.....	127
12.3.3 Defined Values	128
12.3.4 Examples of searching network	129
13 TCP/UDP Service Interface Description.....	130
13.1 Initialize IP service %IPINIT	130
13.1.1 Command Syntax.....	130
13.1.2 Description.....	130
13.1.3 Defined Values	130
13.2 Open TCP/UDP link %IPOPEN.....	131
13.2.1 Command Syntax.....	131
13.2.2 Description.....	131
13.2.3 Defined Values	131
13.3 Configure TCP/UDP as a server %IPLISTEN.....	131
13.3.1 Command Syntax.....	131
13.3.2 Description.....	132
13.3.3 Defined Values	132
13.4 Send TCP/UDP data %IPSEND.....	132
13.4.1 Command Syntax.....	132
13.4.2 Description.....	132
13.4.3 Defined Values	132
13.5 Data buffer query command %IPGETDATA	133
13.5.1 Command Syntax.....	133
13.5.2 Description.....	133
13.5.3 Defined Values	133
13.6 Arrival data notification %IPDATA	133
13.6.1 Command Syntax.....	133
13.6.2 Description.....	133
13.6.3 Defined Values	133
13.7 Close TCP/UDP link %IPCLOSE.....	134
13.7.1 Command Syntax.....	134
13.7.2 Description.....	134
13.7.3 Defined Values	134
13.8 Enable transparent transfer mode %IPENTRANS.....	134
13.8.1 Command Syntax.....	134
13.8.2 Description.....	135
13.9 Register voice phone number %IPCHOSTPN.....	135
13.9.1 Command Syntax.....	135
13.9.2 Description.....	135
13.9.3 Defined Values	135
13.10 Set autoconnecting parameter %IPCFL.....	135
13.10.1 Command Syntax.....	135

13.10.2 Description.....	136
13.10.3 Defined Values	136
13.11 Start autoconnecting %IPAUTOCON	137
13.11.1 Command Syntax	138
13.11.2 Description	138
13.12 PDP environment setting command %IPCGDCONT.....	138
13.12.1 Command Syntax.....	138
13.12.2 Description.....	138
13.12.3 Defined Values	139
13.12.4 Informative Examples	140
13.13 Set IP configuration parameter %IPCTRIP	141
13.13.1 Command Syntax.....	141
13.13.2 Description.....	141
13.13.3 Defined Values	141
13.14 PDP authorization setting command %IPQCPDPP.....	142
13.14.1 Command Syntax.....	142
13.14.2 Description.....	142
13.14.3 Defined Values	142
13.14.4 Informative Examples	143
13.15 Enable or disable IP notification %IPNOTIF.....	144
13.15.1 Command Syntax.....	144
13.15.2 Description.....	144
13.15.3 Defined Values	144
14 STK Service Interface Description	145
14.1 STK Set Facilities %STSF	145
14.1.1 Command Syntax	145
14.1.2 Description.....	145
14.1.3 Defined Values	145
14.2 STK Indication %STIN	145
14.2.1 Command Syntax.....	145
14.2.2 Description.....	146
14.2.3 Defined Values	146
14.3 STK Get Information %STGI.....	146
14.3.1 Command Syntax.....	146
14.3.2 Description.....	147
14.3.3 Defined Values	147
14.3.4 Example.....	148
14.4 STK Give Response %STGR	148
14.4.1 Command Syntax.....	148
14.4.2 Description.....	149
14.4.3 Defined Values	149

15 Remote SMS Interface Description	150
15.1 Query current status of module Module.all.....	150
15.1.1 Remote SMS Syntax	150
15.1.2 Description.....	150
15.1.3 Defined Values	150
15.2 Query IP status of module Module.ipstack	151
15.2.1 Remote SMS Syntax	151
15.2.2 Description.....	151
15.2.3 Defined Values	151
15.3 Remote reset module Module.reset	151
15.3.1 Remote SMS Syntax	151
15.3.2 Description.....	151
16 Overall Design Constraints	152
16.1 Standards Compliance	152
16.2 Hardware Limitations.....	152
16.3 Technology Limitations	152
17 Software Quality Attributes	153
18 Dependencies	154
19 Feasibility Analysis.....	155
20 Issues To Be Determined	156
21 Appendixes.....	157
21.1 Appendix 1 AT Command Description.....	157
21.1.1 Basic Commands	157
21.1.2 S Register Command	157
21.1.3 Extended Commands and Manufacturer Defined Commands.....	157
21.1.4 Abort Attribute:	159
21.2 Appendix 2 CME Error List.....	159
21.3 Appendix 3 CMS Error List.....	164
21.4 Appendix 4 Summary of Final Result Codes	165
21.5 Appendix 6 List of Initial Values of Command Parameter After MS Restart	166
21.6 Appendix 7 Examples of Show Mode	167



Table List

Table 3-1 Influence of V parameter on the response format	28
Table 5-1 Bit number.....	68

Figure List

Figure 1-1 Block diagram of interaction between TE and MS.....	23
Figure 5-1 Half byte coding with a total of 5 digits.....	76

1 Scope

1.1 Terminal Display

This document describes the AT interface of Huawei UMTS Module. The description on the AT interface is only limited to the interface packet itself, the usage and use procedure of TE and MS, and does not cover the contents which are not directly related to the interface.

1.1.1 Interface Overview

HUAWEI UMTS Module is a wireless terminal of UART or USB interface. It is used to provide data service, voice and SMS functions.

This document describes the AT interface. Therewith no description or definition explain for the document interface, and no temporary support to all kinds of parameter values, so no suggestion of usage.

In the subsequent AT command parameters, two formats are involved: <>, and [], as described below:

<...> Parameters enclosed in angle brackets must be completed. Brackets themselves do not appear in the command line.

[...] Optional subparameter of a command is enclosed in square brackets. Brackets themselves do not appear in the command line or response.

<CR> Carriage return character, which value is specified with command S3.

<LF> Linefeed character, which value is specified with command S4.

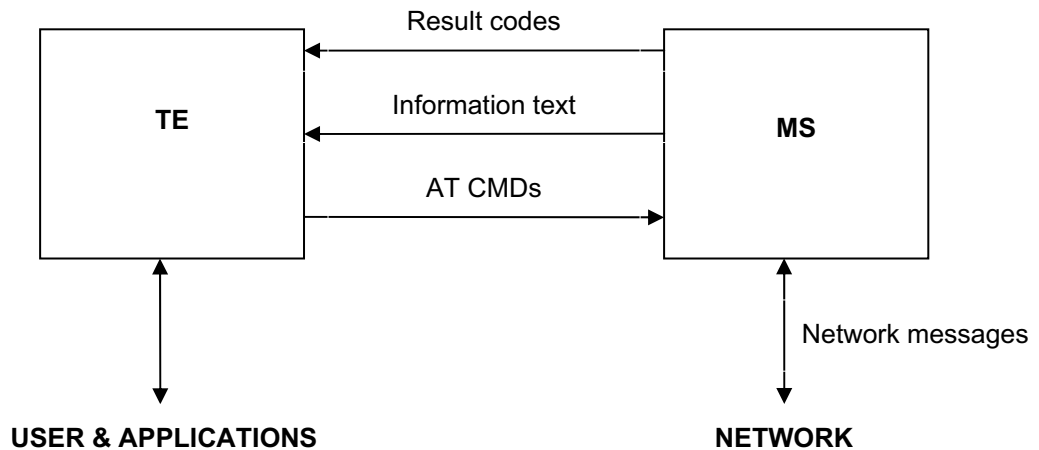


Figure 1-1 Block diagram of interaction between TE and MS

1.2 Interface Design Principles

1. Each interface should be functionally convergent.
2. Since the AT command is a packet transmitted via communication port, the packet size is limited. For the transmission of AT command, in addition to the two characters "AT", a maximum of 1600 characters can be received (including the empty characters at the end). For the "response" message or URC reported by the board, the maximum length is limited to 1600 characters.
3. Each command line can include only one AT command. For the URC instruction or response reported from MS to TE, only one AT command is allowed in a command line.
4. In order to make the commands and response formats more readable and standard, except the original interfaces of Qualcomm, in all newly added interfaces, e.g. no space can be contained in the commands such as AT%XXX: <arg0>, <arg1>, or behind %, colon or comma. No redundant space is allowed at the head or end.
5. After delivering each AT command, the TE cannot deliver the second AT command until the MS has made response to this AT command. Otherwise, the second AT command will not be executed.
6. For the AT command to which the response is given only after a long time, in order to prevent interference on other events, it is recommended to report the final execution result asynchronously. If the MS responds to the TE only after a long time of waiting, e.g. the "AT+CCFC=?" command receives a response only after a long time after the command is delivered, the MS may have received the reported instruction of RING on this occasion. Namely, the reporting of RING may interrupt other responses, and other URCs will not interrupt the response of command, and the interrupted part of the response will continue being reported.
7. Unless otherwise specified, all default codes between TE and MS take on this format: GSM 7 bit Default Alphabet. See also Section 6 in protocol 23.038. The character @ is transmitted on the interface still according to 0x00 of 7bit coding. The board software and API should be able to process this character. The board

uploads the carriage return character (<CR>) and linefeed character (<LF>) in the string in the form of space.

8. A sort of compounding between quotation and comma can not exist in the string in this current version. For the data format of UCS2 code, the code value should be reported in the string format (if the code value is 0x553a, 553a should be reported).
9. The "Possible response" sent from MS to TE is composed of "Information text" and "Result code", where "Information text" is optional, and "Result code" is mandatory. The format of "Possible response" is controlled by the ATV command, as detailed in the ATV command description. All "Possible responses" listed in the tables in this documents are in the ATV1 format.
10. When module is power on, it returns OK that sends AT to UART1, MODEM or PCUI means module initializes successfully, could deal with AT command normally.

1.3 Interface Change Principles

For the extended interface, parameters can be added behind the AT command. If the interface fails to meet the new requirements as detected in the later stage of product development, new parameters can be added on the basis of the original interface. In addition, for all the currently available interfaces, if the command received by MS is not identifiable, the "result code" of COMMAND NOT SUPPORT will be reported; if there is one surplus command parameter, the MS will report the "result code" of the corresponding TOO MANY PARAMETERS. No equal mark itself is deemed a surplus command parameter.

All newly added AT command interfaces of the E630 project team begin with "%". This project team specifies that: In the AT command name such as "AT%XXX", the number of X cannot be more than 9 currently.

2 Interface Introduction

All interfaces herein refer to the interfaces between TE and MS, and are used for guiding the implementation of the function requirements. The interface covers voice call, short message receiving and sending, data traffic flow, phone book statistics, supplementary service, and MS network system information setting.

For the commands sent from TE to MS, see also the detailed description in Appendix 16.1. Note that in the returned results of the TEST command, “,” and “-” are different. For example, the returned result of “+CMGD=?” is: +CMGD: (1,5),(0-4), which means that the first parameter value may be 1 or 5, and the second parameter value may range from 0 to 4.

3 Query of Basic Information and Description of Set Interface

3.1 Terminal error report command +CMEE

3.1.1 Command Syntax

Command	Possible response(s)
+CMEE=<n>	<CR><LF>OK<CR><LF>
+CMEE?	<CR><LF>+CMEE: <n><CR><LF><CR><LF>OK<CR><LF>
+CMEE=?	<CR><LF>+CMEE: (list of supported <n>s) <CR><LF><CR><LF>OK<CR><LF>

3.1.2 Description

This command is used to set whether to use result code: +CME ERROR:<err> indicates the error related to MS. When you set to use result code, the MS-related error will generate a result code: +CME ERROR: <err>, which will replace the ordinary ERROR result code. If the error reasons are not related to MS, the ordinary ERROR will still be returned.

3.1.3 Defined Values

<n>:

- 0 Do not use +CME ERROR :<err>result code, only ERROR is returned in case of error occurrence.
- 1 Use +CME ERROR :<err>result code, <err> adopts the error code value.
- 2 Use +CME ERROR :<err>result code, <err> adopts the detailed string value of the error.

<err>:

The value is given in the CME ERROR list in the Appendix.

3.2 Echo command E

3.2.1 Command Syntax

Command	Possible response(s)
E[<value>]	<CR><LF>OK<CR><LF>

3.2.2 Description

This command is used to set whether MS will echo the characters received from TE.

3.2.3 Defined Values

<value>:

0 MS does not echo the characters received from TE.

1 MS echoes the characters received from TE.

If no <value> is included, it is equivalent to the effect that the <value> is 0.

Note: Software may set ATE0 automatically.

3.3 Command line carriage return character S3

3.3.1 Command Syntax

Command	Possible response(s)
S3=<value>	<CR><LF>OK<CR><LF>
S3?	<CR><LF><value><CR><LF><CR><LF>OK<CR><LF>>

3.3.2 Description

This command is used to set the command line carriage return character S3. S3 saves the command line carriage return character in the form of ASCII code value. This character is sent by TE. It means the end of a command line, and is identified by the MS. This character is also sent by MS, and serves as a part of the header, tail and end mark of the “result code” and “information response”.

When using the “S3=<value>” command to set S3, the current S3 character can serve as carriage return character of this command line, and the “result code” of this command line will use the newly set S3 character immediately, rather than waiting until the next command line.

3.3.3 Defined Values

<value>:

0-127 The S3 character is set in the form of ASCII code value.

3.4 Response format character S4

3.4.1 Command Syntax

Command	Possible response(s)
S4=<value>	<CR><LF>OK<CR><LF>
S4?	<CR><LF><value><CR><LF><CR><LF>OK<CR><LF>

3.4.2 Description

This command is used to set the response format character S4. S4 saves the response format character in the form of ASCII code value. This character is sent by MS, and serves as a part of the header, tail and end mark of the “result code” and “information response”.

If the S4 character is changed in a command line, the “result code” of this command line will use the new S4 character immediately, rather than waiting until the next command line.

3.4.3 Defined Values

<value>:

0-127 The S4 character is set in the form of ASCII code value.

3.5 ME response format command V

3.5.1 Command Syntax

Command	Possible response(s)
V[<value>]	<CR><LF>OK<CR><LF>

3.5.2 Description

This command is used to set the format of “result code” and “information response” of the AT command, including the composition of the header and tail, and the form of the result code contents. The result code contents may be in the form of numerals or detailed strings. The following table describes the influence of format setting on the format of “result code” and “information response”. <cr> means S3 character, and <lf> means S4 character.

Table 3-1 Influence of V parameter on the response format

	V0	V1
Information responses	<text><cr><lf>	<cr><lf> <text><cr><lf>
Result codes	<numeric code><cr>	<cr><lf> <verbose code><cr><lf>

3.5.3 Defined Values

<value>:

0 MS sends the abbreviated header and tail, and uses the result code in the numeral form.

1 MS sends the complete header and tail, and uses the result code in the form of detailed strings.

If no <value> is included, it is equivalent to the effect that the <value> is 0.

3.6 Backspace character S5

3.6.1 Command Syntax

Command	Possible response(s)
S5=<value>	<CR><LF>OK<CR><LF>
S5?	<CR><LF><value><CR><LF><CR><LF>OK<CR><LF>

3.6.2 Description

This command is used to set the backspace character S5. S5 saves the backspace character in the form of ASCII code value. This character is sent by TE, and means to delete the previous character. It is identified by MS.

3.6.3 Defined Values

<value>:

0-127 The S5 character is set in the form of ASCII code value.

3.7 RSSI query function command +CSQ

3.7.1 Command Syntax

Command	Possible response(s)
+CSQ	<CR><LF>+CSQ: <rssi>,<ber><CR><LF><CR><LF>OK<CR><LF>

+CSQ=?	<CR><LF>+CSQ: (list of supported <rss>s),(list of supported <ber>s) <CR><LF><CR><LF>OK<CR><LF>
--------	--

3.7.2 Description

The EXECUTION command returns the RSSI and BER of ME.

The TEST command returns the supported RSSI and BER values.

3.7.3 Defined Values

<rss>: Indication of the receiving signal strength

0	Equal to or less than -113 dBm
1	-111 dBm
2...30	-109... -53 dBm
31	Equal to or higher than -51 dBm
99	Unknown or unmeasurable.

<ber>(bit error rate): Currently, the BER query is not supported, and 99 will be returned after issuing the EXECUTION or TEST command.

3.8 RSSI level query function command + CSQLVL

3.8.1 Command Syntax

Command	Possible response(s)
+CSQLVL	<CR><LF><uiPercent>,<rss><CR><LF>
+CSQLVL=?	<CR><LF> +CSQLVL: <uiPercent>,<rss><CR><LF><CR><LF>OK<CR><LF>

3.8.2 Interface Description

This command is used to periodically reset the module automatically.

3.8.3 Defined Values

< uiPercent >: The grid of the signal.

0~5: Indicate the signal intensity.

<rss>: Indication of the receiving signal strength

0	Equal to or less than -113 dBm
1	-111 dBm
2...30	-109... -53 dBm

- 31 Equal to or higher than -51 dBm
- 99 Unknown or unmeasurable.

3.9 Signal %RSSI

3.9.1 Command Syntax

Command	Possible response(s)
%RSSI	<CR><LF>%RSSI: <rssi><CR><LF><CR><LF>OK<CR><LF>

3.9.2 Description

This command returns received signal strength indication. It is a negative value. The unit is dBm.

3.9.3 Defined Values

<rssi>: Received Signal Strength Indicator

51 ~ 113: -113 dBm ~ -51 dBm -

125: -125 dBm. No signal.

NOTE: The relationship between RSCP, EC/IO and RSSI is as below, all values should be negative.

$RSCP = RSSI + EC/IO$

3.10 Operation mode setting command +CFUN

3.10.1 Command Syntax

Command	Possible response(s)
+CFUN=[<fun>[,<rst>]]	<CR><LF>OK<CR><LF> In case of MS-related error: <CR><LF>+CME ERROR: <err><CR><LF>
+CFUN?	<CR><LF>+CFUN: <fun><CR><LF><CR><LF>OK<CR><LF> In case of MS-related error: <CR><LF>+CME ERROR: <err><CR><LF>
+CFUN=?	<CR><LF>+CFUN: (list of supported <fun>s), (list of supported <rst>s)<CR><LF><CR><LF>OK<CR><LF>

3.10.2 Description

The "EXECUTION" command is used to set the MS mode or restart the MS.

The READ command is used to return the current mode.

The TEST command is used to return the supported parameter values.

3.10.3 Defined Values

<fun>:

- 0 Set as LPM (low power consumption) mode (previous mode must not be offline)
- 1 Set as online mode (default value) (previous mode must not be offline)
- 4 Set as offline mode (previous mode must not be FTM)
- 5 Set as offline FTM (previous mode must be online)
- 6 Reset MS (previous mode must be offline)
- 7 Set as RFOff mode (about radio frequency)

<rst>: Whether to restart MS before setting (currently not supported)

NOTE: at+cfun without config value will set as LPM (low power consumption) mode.

3.11 Manufacturer information query command +CGMI

3.11.1 Command Syntax

Command	Possible response(s)
+CGMI	<CR><LF><manufacturer><CR><LF><CR><LF>OK<CR><LF>
+CGMI=?	<CR><LF>OK<CR><LF>

3.11.2 Description

This command is used to query the manufacturer information.

3.11.3 Defined Value

<manufacturer>: Manufacturer information. Its value is a string.

3.11.4 Informative Examples

```
AT+CGMI
huawei
```

3.12 Software version number query command +CGMR

3.12.1 Command Syntax

Command	Possible response(s)
+CGMR	<CR><LF><softversion><CR><LF><CR><LF>OK<CR><LF>
+CGMR=?	<CR><LF>OK<CR><LF>

3.12.2 Description

The EXECUTION command returns the software version number of ME.

3.12.3 Defined Value

<softversion>: Software version number. It is a string composed of 31 characters at most.

3.13 IMSI query command +CIMI

3.13.1 Command Syntax

Command	Possible response(s)
+CIMI	<CR><LF><IMSI><CR><LF><CR><LF>OK<CR><LF>
+CIMI=?	<CR><LF>OK<CR><LF>

3.13.2 Interface Description

This command queries the IMSI value of the USIM card or SIM card.

3.13.3 Defined Value

<IMSI>: The IMSI value stored in the card is returned directly. The returned value is a string composed of decimal digits that range from 0 to 9. Its composition is as follows:

A total of 15 characters or less		
3 char	2 or 3 char	
MCC	MNC	MSIN

MCC Country code

MNC Network code, GSM application

MSIN Identifies the identity of the mobile subscriber

3.13.4 Informative Examples

If MCC is "123", MNC is "45", and MSIN is "12345678", then

AT+CIMI
1234512345678

3.14 IMEI query command +CGSN

3.14.1 Command Syntax

Command	Possible response(s)
+CGSN	<CR><LF><IMEI><CR><LF><CR><LF>OK<CR><LF>
+CGSN=?	<CR><LF>OK<CR><LF>

3.14.2 Interface Description

This command is used to query the IMEI of board.

3.14.3 Defined Value

<IMEI>: The IMEI value of the board is returned directly. The returned value is a string composed of:

8 char	6 char	1 char
TAC	SNR	Spare

TAC Type code allocated for device

SNR Sequence number of the device

Spare For standby purpose

3.14.4 Informative Examples

If TAC is "35154800", SNR is "022544", and Spare is "4", then

AT+CGSN
351548000225444

3.15 Loudspeaker volume level +CLVL

3.15.1 Command Syntax

Command	Possible response(s)
+CLVL=<level>	+CME ERROR: <err>
+CLVL?	+CLVL: <level> +CME ERROR: <err>

+CLVL=?	+CLVL: (list of supported <level>s) +CME ERROR: <err>
---------	--

3.15.2 Description

This command is used to select the volume of the internal loudspeaker of the MT. Refer subclause 9.2 for possible <err> values.

Test command returns supported values as compound value.

3.15.3 Defined values

<level>:

0-5 integer type value with manufacturer specific range (smallest value represents the lowest sound level). 0 means mute.

3.16 Mute control +CMUT

3.16.1 command syntax

Command	Possible response(s)
+CMUT=<n>	+CME ERROR: <err>
+CMUT?	+CMUT: <n> +CME ERROR: <err>
+CMUT=?	+CMUT: (list of supported <n>s)

3.16.2 Description

This command is used to enable and disable the uplink voice muting during a voice call. Refer subclause 9.2 for possible <err> values.

Test command returns supported values as compound value.

3.16.3 Defined values

<n>:

- 0 mute off
- 1 mute on

3.17 Shake Hand between MS and TE %HS

3.17.1 command syntax

Command	Possible response(s)
%HS=<id>,<action>	<CR><LF>%HS:<id>,<protocol>,<is_offline>,<product_class>,<product_id>,<software_id><CR><LF><CR><LF>>OK<CR><LF>

3.17.2 Description

This command is used to shake hand between MS and TE.

3.17.3 Defined values

<id>: 8 digits, used to recognize MS.

<action>: represent the action type of TE.

0: TE is living

1: TE is stopped

<protocol>: indicate the protocol state of the module

0: Module is running at APP

1: Module is running at BOOT

<is_offline>:

0: online

1: offline

2: LPM

<product_class>: product class

0: GSM/WCDMA

1: CDMA 1X ONLY

2: CDMA + EVDO SUPPORT

<product_id>: product id

6: EM770W

<software_id>: reserved

3.18 Repeat Last Command A/

3.18.1 Command Syntax

Command	Possible response(s)
A/	

3.18.2 Description

This command is used to repeat last command.

3.18.3 Defined Value

NA

3.18.4 Example

If the last command is:

AT+GSN

+GSN: E43928A5

OK

A/

+GSN: E43928A5

OK

3.19 SPN read function command %SPN

3.19.1 Command Syntax

Command	Possible response(s)
%SPN=<spn_type>	<CR><LF>%SPN:<disp_rplmn>,<coding>,<spn_name><CR><LF><CR><LF>OK<CR><LF> In case of MS-related error: <CR><LF>+CME ERROR: <err><CR><LF>
%SPN=?	<CR><LF>%SPN: (list of supported < spn_type >)<CR><LF><CR><LF>OK<CR><LF>

3.19.2 Description

This command is used for TE to query the SPN file of 2G/3G currently stored on the SIM/USIM card through the ME.

3.19.3 Defined Values

<spn_type>:

0 GSM_SPN

1 USIM_SPN

<disp_rplmn>:

0 Do not display RPLMN

1 Display RPLMN

99 This field is invalid, and it is not necessary to read the spn_name field any longer.

<coding>: Coding scheme. It means the character code of the spn_name field, and specifies the language.

0 GSM 7 bit Default Alphabet

1 RAW mode (namely, upload the spn_name in the format of original data).

<spn_name>: A string. In case of GSM7bit code, the string is composed of 16 characters at most. When the coding scheme is 1, and the contents of the string are data described by "hexadecimal text value", the string will not be greater than 32. When the coding mode reported on the board is "RAW mode", this parameter should be completed as a hexadecimal numeral with 0x removed.

3.19.4 Informative Examples

For example: When the 7bit coding format of SPN is read as "Vodafone", the following will be fed back after the read result is reported: %SPN:1,0,"vodafone"; if it is "China Mobile" in the USC2 coding format, the following will be fed back: %SPN:1,1,"804E2D56FD79FB52A8".

3.20 Hardware version number query function %HWVER

3.20.1 Command Syntax

Command	Possible response(s)
%HWVER	<CR><LF>%HWVER:<hardversion><CR><LF><CR><LF>OK<CR><LF>

3.20.2 Description

The EXECUTION command returns the hardware version number of ME.

3.20.3 Defined Value

<hardversion>: Hardware version number. It is a string composed of 31 characters at most.

3.21 Hardware version number query function %HWVER

3.21.1 Command Syntax

Command	Possible response(s)
%HWVER	<CR><LF>%HWVER:<hardversion><CR><LF><CR><LF>OK<CR><LF>

3.21.2 Description

The EXECUTION command returns the hardware version number of ME.

3.21.3 Defined Value

<hardversion>: Hardware version number. It is a string composed of 31 characters at most.

3.22 Network information query %NWINFO

3.22.1 Command Syntax

Command	Possible response(s)
%NWINFO	<CR><LF>%NWINFO: <srv_band>,< srv_nodeB_PLMN > , < srv_nodeB_BS > ,<srv_cell_stat > ,<srv_psc>,<ecio>,<rscp>,<lac>,<cell_id>,<neighbor_cell_num>,<neig_psc1>,<neig_psc2>,<neig_psc3>,<neig_psc4>,<neig_psc5>,<neig_psc6> <CR><LF><CR><LF>OK<CR><LF>

3.22.2 Interface Description

This command is used to query the registered network information of the wireless module in the normal state, includes serving cell information, neighbour cells information of the active set, base station ID, frequency and so on.

3.22.3 Defined Values

< srv_band >: Information of frequency the wireless module registered.

43 (SYS_BAND_GSM_850) GSM 850

44 (SYS_BAND_GSM_EGSM_900) Extended GSM 900

45 (SYS_BAND_GSM_PGSM_900)	Primary GSM 900
47 (SYS_BAND_GSM_DCS_1800)	GSM DCS systems
48 (SYS_BAND_GSM_PCS_1900)	GSM PCS
80 (SYS_BAND_WCDMA_I_IMT_2000)	WCDMA IMT 2000
81 (SYS_BAND_WCDMA_II_PCS_1900)	WCDMA PCS 1900
84 (SYS_BAND_WCDMA_V_850)	WCDMA 850
87 (SYS_BAND_WCDMA_VIII_900)	WCDMA 900

< srv_nodeB_PLMN > and < srv_nodeB_BS >: Information of base station the wireless module maintained.

0~255: Base station ID.

Note: It only supports to query base station information at GSM mode now, and returns 0,0 at WCDMA mode.

<srv_cell_stat >: Serving cell state.

0: Indicates not register on serving cell currently.

1: Indicates register on serving cell currently.

<srv_psc>: Serving cell primary scrambling code.

0~65535: Serving cell primary scrambling code.

Note: It returns primary scrambling code at WCDMA mode but cell id at GSM mode.

<ecio>: Returns the Ec/Io value. It is a negative.

Note: It only supports to query base station information at WCDMA mode now, and returns 0 at GSM mode.

<rscp>: Received Signal Code Power. Returns the RSCP value. It is a negative.

Note: It only supports to query base station information at WCDMA mode now, and returns 0 at GSM mode.

<lac>: Location area code, the value displays hexadecimal.

<cell_id>: Cell ID, the value displays hexadecimal.

<neighbour:_cell_num>: Number of neighbour cells. It equals 0 means cannot get any neighbour cell, maybe because of the network environment

0~6: It supports to maintain six neighbour cells at most.

<neig_psc1>...<neig_psc6>: Primary scrambling code of neighbour cells.

0~65535: Primary scrambling code of neighbour cells.

Note: It returns primary scrambling code at WCDMA mode but cell id at GSM mode.

3.23 Module delay resetting %RESET

3.23.1 Command Syntax

Command	Possible response(s)
%RESET=<delay_time>	<CR><LF>OK<CR><LF>
%RESET?	<CR><LF>%RESET:<delay_time><CR><LF><CR><LF>OK<CR><LF>
%RESET=?	<CR><LF>%RESET:(range of supported <delay_time>)<CR><LF><CR><LF>OK<CR><LF>

3.23.2 Interface Description

This command is used to delay to reset module by user.

3.23.3 Defined Values

<delay_time>: Delay time.

0: Disable the function of this command.

1~65535: Delay time, indicates in second.

Note: We can't use this command to reset module at FTM mode, it's need to switch module to ONLINE mode to use the command again.

3.24 Module automatic resetting %AUTORESET

3.24.1 Command Syntax

Command	Possible response(s)
%AUTORESET=<auto_reset_time >	<CR><LF>OK<CR><LF>
% AUTORESET?	<CR><LF>% AUTORESET:< auto_reset_time ><CR><LF><CR><LF>OK<CR><LF>
% AUTORESET =?	<CR><LF>% AUTORESET:(range of supported <delay_time>)<CR><LF><CR><LF>OK<CR><LF>

3.24.2 Interface Description

This command is used to periodically reset the module automatically.

3.24.3 Defined Values

<delay_time>: Delay time.

0: Disable the function of this command.

120~172800: Delay time, indicates in second. The interval is from two minutes to two days.

3.25 Return current time of the module +CCLK

3.25.1 Command Syntax

Command	Possible response(s)
+CCLK=<time>	<CR><LF>OK<CR><LF> In case of MS-related error: <CR><LF>+CME ERROR: <err><CR><LF>
+CCLK?	+CCLK: <time>
+CCLK=?	<CR><LF>OK<CR><LF>

3.25.2 Interface Description

Set command sets the real-time clock of the MT. If setting fails in an MT error, +CME ERROR: <err> is returned.

Read command returns the current setting of the clock.

3.25.3 Defined Values

<time>: string type value; format is "yyyy/MM/dd,hh:mm:ss±zz", where characters indicate year, month, day, hour, minutes, seconds and time zone (indicates the difference, expressed in quarters of an hour, between the local time and GMT; range -47...+48). E.g. 6th of May 1994, 22:10:00 GMT+2 hours equals to "1994/05/06,22:10:00+08"

NOTE: If MT does not support time zone information then the three last characters of <time> are not returned by +CCLK?.

3.26 Store user settings &W

3.26.1 Command Syntax

Command	Possible response(s)
&W	<CR><LF>OK<CR><LF> In case of MS-related error: <CR><LF>+CME ERROR: <err><CR><LF>

3.26.2 Interface Description

Set command stores some user settings to the profile, which can be resumed by ATZ command.

The commands and parameters which can be stored are as follows:

Command	Parameter
---------	-----------

E	<Value>
V	<Value>
Q	<Value>
X	<Value>
&C	<Value>
&D	<Value>
&S	<Value>
+IFC	<DCE_by_DTE>,<DTE_by_DCE>
\\V	<Value>
S0	<n>
S7	<n>
S10	<n>
+ICF	<Format>,<Parity>
+IPR	<Value>

In this table, these are several commands we have not describes in this document. Detailed descriptions can be found in other references for these basic commands.

NOTE: The parameters of %AUTORESET, %IPCT RIP, %IPCFL commands are stored in NV directly by setting commands. They are not stored by &W command.

3.27 Resume user settings Z

3.27.1 Command Syntax

Command	Possible response(s)
Z	<CR><LF>OK<CR><LF> In case of MS-related error: <CR><LF>+CME ERROR: <err><CR><LF>

3.27.2 Interface Description

Set command resumes the user settings which are stored by AT&W command.

The commands and parameters which can be resumed are as follows:

Command	Parameter
E	<Value>
V	<Value>

Q	<Value>
X	<Value>
&C	<Value>
&D	<Value>
&S	<Value>
+IFC	<DCE_by_DTE>,<DTE_by_DCE>
\\V	<Value>
S0	<n>
S7	<n>
S10	<n>
+ICF	<Format>,<Parity>

3.28 Set to factory defined configuration &F

3.28.1 Command Syntax

Command	Possible response(s)
&F	<CR><LF>OK<CR><LF> In case of MS-related error: <CR><LF>+CME ERROR: <err><CR><LF>

3.28.2 Interface Description

Set command sets to factory defined configuration.

The commands and parameters which can be set to factory configuration are as follows:

Command	Parameter
E	1
V	1
Q	0
X	0
&C	2
&D	2
&S	0

S0	0
S7	50
S10	14
+IPR	115200
+ICF	3,3
+IFC	2,2
%AUTORESET	0
%IPCTRIP	0
%IPCFL	0,0,1,30,0,10,100,60,3,60
%IPNOTIF	1
+CLIP	0,1
+CNMI	1,4,0,0,0
+CPMS	"sm","sm","sm"
+CCWA	0

3.29 Set Data Carrier Detect (DCD) Line mode &C

3.29.1 Command Syntax

Command	Possible response(s)
&C[value]	<CR><LF>OK<CR><LF> In case of MS-related error: <CR><LF>+CME ERROR: <err><CR><LF>

3.29.2 Interface Description

The command sets how the state of the DCD line (circuit 109) relates to MC75's internal activity..

3.29.3 Defined Values

<value>:

- 0 Circuit 109 (CF) always ON.
- 1 Circuit 109 (CF) ON in accordance with the specified service. DCD line is High during a circuit switched call.
- 2 Circuit 109 (CF) ON. DCD is always high. This line toggles low for 1 second when the circuit switched call is disconnected. (default)

- 3 Circuit 109 (CF) ON. DCD is Low. High during a packet switched call (only applies to IP STACK PPP)
- 4 Circuit 109 (CF) ON. DCD is Low. High on socket TCP

NOTE: AT&C will set value to 0.

3.30 Set circuit Data Terminal Ready (DTR) function mode &D

3.30.1 Command Syntax

Command	Possible response(s)
&D[value]	<CR><LF>OK<CR><LF> In case of MS-related error: <CR><LF>+CME ERROR: <err><CR><LF>

3.30.2 Interface Description

The command sets how the TA responds when circuit 108/2 (DTR) is changed from ON to OFF during data mode..

3.30.3 Defined Values

<value>:

- 0 TA ignores status of DTR.
- 1 Change to command mode while retaining the connected call.
- 2 Disconnect data call, change to command mode. During state DTR = OFF auto-answer is off. (default)

NOTE: AT&D will set value to 0.

3.31 TE2-MT2 Character Framing +ICF

3.31.1 command syntax

Command	Possible response(s)
AT+ICF=[<format>[,<parity>]]	<CR><LF>OK<CR><LF> <CR><LF>ERROR <CR><LF>
AT+ICF?	<CR><LF>+ICF: <format>[,<parity>]<CR><LF><CR><LF>OK<CR><LF>

AT+ICF=?	<CR><LF>+ICF: (list of supported < format >s), (list of supported < parity>s) <CR><LF><CR><LF>OK<CR><LF>
----------	--

3.31.2 Description

This extended-format compound parameter is used to determine the local serial port start-stop (asynchronous) character framing that the MT2 shall use while accepting TE2 command set and while transmitting information text and result codes to the TE2, if this is not automatically determined (see +IPR).

3.31.3 Defined values

<format> valid numeric values

- 0: auto detect [NOT SUPPORTED]
- 1: 8Data 2Stop
- 2: 8Data 1Parity 1Stop
- 3: 8Data 1Stop (Default)
- 4: 7Data 2Stop
- 5: 7Data 1Parity 1Stop
- 6: 7Data 1Stop

<parity> defined numeric values

- 0: odd
- 1: even
- 2: Mark [NOT SUPPORTED]
- 3: space (Default)

Note: When using UART1 to do PS data service, sending the setting command of +ICF will return ERROR.

3.32 TE2-MT2 Fixed Data Rate +IPR

3.32.1 command syntax

Command	Possible response (s)
---------	-----------------------

AT+IPR=<rate>	<CR><LF>OK<CR><LF> <CR><LF>ERROR <CR><LF>
AT+IPR?	<CR><LF>+IPR:<rate><CR><LF><CR><LF> >OK<CR><LF>
AT+IPR=?	<CR><LF>+IPR: (supported auto detectable rates) , (list of supported fixed-only rates)) <CR><LF><CR><LF>OK<CR><LF>

3.32.2 Description

This numeric extended-format parameter specifies the data rate at which the MT2 will accept command set, in addition to 1200 bit/s or 9600 bit/s (as required in EIA/TIA-602). It may be used to select operation at rates at which the MT2 is not capable of automatically detecting the data rate being used by the TE2. 115200bps. (Default)

3.32.3 Defined values

<rate> valid numeric values, bps

300,600,1200,2400,4800,9600,19200,38400,57600,115200,230400

3.33 TE-TA local flow control +IFC

3.33.1 command syntax

Command	Possible response(s)
AT+IFC=[<DCE_by_DTE> [, <DTE_by_DCE>]]	<CR><LF>OK<CR><LF> <CR><LF>ERROR<CR><LF>
AT+IFC?	<CR><LF>+IFC:<DCE_by_DTE> , <DTE_by_DCE><CR><LF><CR><LF>OK<CR><LF>
AT+IFC=?	<CR><LF>+ICF: (list of supported <DCE_by_DTE>s) , (list of supported <DTE_by_DCE>s) <CR><LF><CR><LF>O K<CR><LF>

3.33.2 Description

The command AT+IFC can be used to set or query the data flow control for both data directions.

3.33.3 Defined values

<DCE_by_DTE>

Specifies the method used by the TE when receiving data from the TA.

0: none

1: XON/XOFF, terminate flow control in the Cellular Engine [NOT SUPPORTED]

2: RTS line (Default)

3: XON/XOFF, evaluate flow control in the Cellular Engine and pass it through
(over the air) to the opposite TE [NOT SUPPORTED]

<DTE_by_DCE>

Specifies the method used by the TA when receiving data from the TE.

0: none

1: XON/XOFF [NOT SUPPORTED]

2: CTS line (Default)

3.34 Result Code Suppression Q

3.34.1 Command Syntax

Command	Possible response(s)
Q[value]	<CR><LF>OK<CR><LF> In case of MS-related error: <CR><LF> ERROR<CR><LF>

3.34.2 Interface Description

This command sets whether or not the TA transmits result code to the TE.

3.34.3 Defined Values

<time>:

0 DCE transmits result code.(default)

1 Result codes are suppressed and not transmitted.

NOTE: ATQ will set value to 0.

3.35 Result Code Selection and Call Progress Monitoring Control X

3.35.1 Command Syntax

Command	Possible response(s)
X[value]	<CR><LF>OK<CR><LF> <CR><LF> ERROR<CR><LF>

3.35.2 Interface Description

The command sets whether or not the TA detects the presence of dial tone and busy signal and whether or not TA transmits particular result codes.

3.35.3 Defined Values

<value>:

0 CONNECT result code only returned, dial tone and busy detection are both disabled.(default)

1 CONNECT <text> result code only returned, dial tone and busy detection are both disabled.

2 CONNECT <text> result code returned, dial tone detection is enabled, busy detection is disabled.

3 CONNECT <text> result code returned, dial tone detection is disabled, busy detection is enabled.

4 CONNECT <text> result code returned, dial tone and busy detection are both enabled.

NOTE: ATX will set value to 0.

3.36 Module Boot-up indication

3.36.1 Command Syntax

Command	Possible response(s)
	EM770W READY

3.36.2 Interface Description

When MU707 boot up, the message "EM770W READY" is reported to UART1, MODEM interface and PC UI interface.

3.37 Enable Sleep Mode %SLEEPMODE

3.37.1 Command Syntax

Command	Possible response(s)
%SLEEPMODE=<flag>	<CR><LF>OK<CR><LF>
%SLEEPMODE?	<CR><LF>%SLEEPMODE:<flag><CR><LF>
%SLEEPMODE=?	<CR><LF>%SLEEPMODE:(range of < flag>) <CR><LF><CR><LF>OK<CR><LF>

3.37.2 Description

This command is used to let module enter the sleep mode. After we send "AT%SLEEPMODE=1", the module will go in sleep mode to save power.

3.37.3 Defined Values

< flag >: sleep flag

- 0 disable
- 1 enable

4 Call control commands and methods

4.1 Originate Call D

4.1.1 Command Syntax

Command	Possible response(s)
D[digits][I/i];	<CR><LF>OK<CR><LF>

4.1.2 Description

This command used to originate a call which may be a voice call or

4.1.3 Defined Values

<digits>: The dial string. ASCII characters includes '0'-'9','*','#','+','.' only can be the first character of the dial string. The length of the dial string cannot bigger than 24.

[I/i]

4.2 Answer Call A

4.2.1 Command Syntax

Command	Possible response(s)
A	<CR><LF>OK<CR><LF>

4.2.2 Description

TE use this command to notify MS a new call is coming. It still works if there is a third call.

4.3 Hangup call +CHUP

4.3.1 Command Syntax

Command	Possible response(s)
+CHUP	<CR><LF>OK<CR><LF>
+CHUP=?	<CR><LF>OK<CR><LF>

4.3.2 Description

Execution command causes the TA to hangup the current GSM/UMTS call of the MT. This command will hang up all the active or hold calls but not affect the new call.

4.4 Incoming Call RING

4.4.1 Command Syntax

Command	Possible response(s)
	RING

4.4.2 Description

An unsolicited reort will be sent to MT periodically(cycle=5s).

4.5 Calling line identification presentation +CLIP

4.5.1 Command Syntax

Command	Possible response(s)
+CLIP[=<n>]	<CR><LF>OK<CR><LF>
+CLIP?	<CR><LF>+CLIP:<n>[,<m>]<CR><LF><CR><LF>OK<CR><LF>
+CLIP=?	<CR><LF>+CLIP:(0,1)<CR><LF><CR><LF>OK<CR><LF>

4.5.2 Description

This command refers to the GSM/UMTS supplementary service CLIP (Calling Line Identification Presentation) that enables a called subscriber to get the calling line identity (CLI) of the calling party when receiving a mobile terminated call. Set command enables or disables the presentation of the CLI at the TE. It has no effect on the execution of the supplementary service CLIP in the network.

4.5.3 Defined Values

<n> (parameter sets/shows the result code presentation status to the TE):

0 disable

1 enable

<m> (parameter shows the subscriber CLIP service status in the network):

0 CLIP not provisioned

1 CLIP provisioned

2 unknown (e.g. no network, etc.)

4.6 Unsolicited report of CLIP +CLIP

4.6.1 Command Syntax

Command	Possible response(s)
+CLIP[=<n>]	<CR><LF>OK<CR><LF>
+CLIP?	<CR><LF>+CLIP:<n>[,<m>]<CR><LF><CR><LF>OK<CR><LF>
+CLIP=?	<CR><LF>+CLIP:(0,1)<CR><LF><CR><LF>OK<CR><LF>

4.6.2 Description

An unsolicited report will be sent to TE after RING every 5 seconds if +CLIP is enabled by the set command of CLIP.

4.6.3 Defined Values

<number>: '0' – '9', '*', '#' in the form of ASCII code value.

<type>: type of address octet in integer format. 145 means international address. Refer to "+CMGS".

<CLI validity>:

0 CLI valid

1 CLI has been withheld by the originator.

2 CLI is not available due to interworking problems or limitations of originating network.

4.6.4 Example

<CLI validity>=0 the unsolicited report will be

+CLIP:82882690,129,,,0

<CLI validity>=1 the unsolicited report will be

+CLIP:;129,,,,1

<CLI validity>=2 the unsolicited report will bes

+CLIP:;129,,,,2

4.7 List current calls +CLCC

4.7.1 Command Syntax

Command	Possible response(s)
+CLCC	[<CR><LF>+CLCC: <id1>,<dir>,<stat>,<mode>,<empty>[, <number>,<type>[,<alpha>[,<priority>]]] [<CR><LF>+CLCC: <id2>,<dir>,<stat>,<mode>,<empty>[, <number>,<type>[,<alpha>[,<priority>]]] [...]]<CR><LF>]<CR><LF>OK<CR><LF>
+CLCC=?	<CR><LF>OK<CR><LF>

4.7.2 Description

Returns list of current calls of MT. If command succeeds but no calls are available, no information response is sent to TE.

4.7.3 Defined Values

<idx>: integer type; call identification number

<dir>:

0 mobile originated (MO) call

1 mobile terminated (MT) call

<stat> (state of the call):

0 active

1 held

2 dialing (MO call)

3 alerting (MO call)

4 incoming (MT call)

5 waiting (MT call)

<mode> (bearer/teleservice):

0 voice

1 data

2 fax

<empty>:

0 call is not one of multiparty (conference) call parties

1 call is one of multiparty (conference) call parties

<number>: string type phone number in format specified by <type>

<type>: type of address octet in integer format

<alpha>: string type alphanumeric representation of <number> corresponding to the entry found in phonebook; used character set should be the one selected with command Select TE Character Set +CSCS. Not support.

<priority>: Not support for the moment.

4.8 Auto Answer % AUTOANSWER

4.8.1 Command Syntax

Command	Possible response(s)
%AUTOANSWER=<n>	<CR><LF>OK<CR><LF>
%AUTOANSWER?	<CR><LF>%AUTOANSWER:<n><CR><LF> <CR><LF>OK<CR><LF>

4.8.2 Description

This command is used to

1. MS can answer a call automatically without resetting the module.
2. The function of auto-answer will be reserved after module reset.

4.8.3 Defined Values

<n>: 0~255

Disable the function of AUTOANSWER

None-zero MS will answer the call automatically after Ring n times.

5 SMS Interface Description

5.1 Select the SMS type +CSMS

5.1.1 Command Syntax

Command	Possible response(s)
+CSMS=<service>	<CR><LF>+CSMS: <mt>,<mo>,<bm><CR><LF><CR><LF>OK<CR><LF>
+CSMS?	<CR><LF>+CSMS: <service>,<mt>,<mo>,<bm><CR><LF><CR><LF>OK<CR><LF>
+CSMS=?	<CR><LF>+CSMS: (list of supported <service>s)<CR><LF><CR><LF>OK<CR><LF>

5.1.2 Description

The SET command is used to set the message service type. The returned <mt>, <mo> and <bm> mean whether this service type is supported for the messages received by the terminal, messages sent by the terminal, and the broadcast messages.

5.1.3 Defined Values

<service>: Message service type.

0 3G TS 23.040, 3G TS 23.041 (the syntax of SMS AT commands is compatible with GSM 07.05 Phase 2 version 4.7.0)

1 3G TS 23.040, 3G TS 23.041 (the syntax of SMS AT commands is compatible with GSM 07.05 Phase 2+ version; note: command AT+CNMA requires <service> setting 1.)

<mt>, <mo>, <bm>:
0 Not supported.
1 Supported.

5.2 Set message format +CMGF

5.2.1 Command Syntax

Command	Possible response(s)
+CMGF[=<mode>]	<CR><LF>OK<CR><LF>
+CMGF?	<CR><LF>+CMGF: <mode><CR><LF><CR><LF>OK<CR><LF>
+CMGF=?	<CR><LF>+CMGF: (list of supported <mode>s)<CR><LF><CR><LF>OK<CR><LF>

5.2.2 Description

The SET command is used to set the format of the short message. The format has two modes, and depends on the <mode> parameter. The two modes are: PDU mode and text mode. The “text” mode is unable to display Chinese. For the format of message in the PDU mode, see also “+CMGS command”.

The READ command is used to return the current mode selection.

The TEST command returns the applicable <mode> values.

5.2.3 Defined Values

<mode>:
0 PDU mode
1 text mode

If no <mode> is included, it is equivalent to the effect that the <mode> is 0.

5.3 Message arrival indication +CMTI

5.3.1 Command Syntax

Command	Possible response(s)
	<CR><LF>+CMTI: <mem>,<index><CR><LF>

5.3.2 Description

Indicate that a new message is received.

5.3.3 Defined Values

<mem>: Currently, "SM", "ME" and "SR" are supported.

"BM" Broadcast message storage

"ME" ME message storage

"MT" ME-associated storage

"SM" (U)SIM message storage

"TA" TA message storage

"SR" State report storage

<index>: Integer value, which indicates the position in the storage.

5.4 Indication of new message reported directly +CMT

5.4.1 Command Syntax

Command	Possible response(s)
	<p>if pdu mode (+CMGF=0): <CR><LF>+CMT: [<reserved>],<length><CR><LF><pdu><CR><LF></p> <p>if text mode (+CMGF=1): <CR><LF>+CMT:<oa>,<reserved>,<scts>,<tooa>,<fo>,<pid>,<dcs>,<sca>,<tosca>,<length><CR><LF><message in text><CR><LF></p>

5.4.2 Description

Received new messages are not stored, but reported to TE directly.

5.4.3 Defined Values

<reserved>: Reserved.

PDU mode:

<length>: Integer value, which indicates the number of bytes of PDU data.

<pdu>: Protocol data unit. Its format is the same as defined in section "Message list command".

text mode:

<oa>: Originating-Address.

<scts>: Service-Centre-Time-Stamp.

<tooa>: Type-of-Originating-Address.

<fo>: First-Octet.
 <pid>: Protocol-Identifier.
 <dcsc>: Data-Coding-Scheme.
 <sca>: Service-Center-Address.
 <tosca>: Type-of- Service-Center-Address.
 <length>: length of user data.
 <message in text>: user data.

5.5 Newly received message state report +CDSI

5.5.1 Command Syntax

Command	Possible response(s)
	<CR><LF>+CDSI: <mem>,<index><CR><LF>

5.5.2 Description

Indicate that a new message state report is received, and specify the storage position.

5.5.3 Defined Values

<mem>: Currently, only "SR" is supported.
 "SR" (U)SIM message storage
 <index>: Integer value, which indicates the position in the storage.

5.6 Indication of new message state report reported directly +CDS

5.6.1 Command Syntax

Command	Possible response(s)
	if pdu mode (+CMGF=0): <CR><LF>+CDS: <length><CR><LF><pdu><CR><LF> if text mode (+CMGF=1): <CR><LF>+CDS: <fo>,<mr>,<ra>,<tora>,<scts>,<dt>,<st><CR><LF>

5.6.2 Description

Received new messages are not stored, but reported to TE directly.

5.6.3 Defined Values

<length>: Integer value, which indicates the number of bytes of PDU data.

<pdu>: Protocol data unit. The data structure is as follows:

[<SCA>]			
<sc_len>	<type_addr>	<numbers>	TPDU

Where, the <SCA>, <sc_len>, <type_addr>, and <numbers> fields are defined in the same way as in the section "Message sending command".

The data structure of TPDU is as follows:

Abbr.	Reference	P1)	R2)
TP-MTI	TP-Message-Type-Indicator	M	2b
TP-UDHI	TP-User-Data-Header-Indication	O	b
TP-MMS	TP-More-Messages-to-Send	M	b
TP-SRQ	TP-Status-Report-Qualifier	M	b
TP-MR	TP-Message-Reference 3)	M	l
TP-RA	TP-Recipient-Address	M	2-12o
TP-SCTS	TP-Service-Centre-Time-Stamp	M	7o
TP-DT	TP-Discharge-Time	M	7o
TP-ST	TP-Status	M	o
TP-PI	TP-Parameter-Indicator	O	o
TP-PID	TP-Protocol-Identifier	O	o
TP-DCS	TP-Data-Coding-Scheme	O	o
TP-UDL	TP-User-Data-Length	O	o
TP-UD	TP-User-Data	O	

1) Mandatory (M) or Optional (O).

2) Integer (l), bit (b), 2 bits (2b), Octet (o), 7 octets (7o), 2-12 octets (2-12o).

<fo> depending on the command or result code: first octet of 3GPP TS 23.040 [3] SMS-DELIVER, SMS-SUBMIT (default 17), SMS-STATUS-REPORT, or SMS-COMMAND (default 2) in integer format

<mr> Message-Reference.

<ra> Recipient-Address

<tora>address type

<scts>Service-Centre-Time-Stamp.

<dt> Discharge-Time.

<st> Status.

5.7 New message notification setting +CNMI

5.7.1 Command Syntax

Command	Possible response(s)
+CNMI=[<mode>[,<mt>[,<bm>[,<ds>[,<bfr>]]]]]	<CR><LF>OK<CR><LF> In case of SMS-related error: <CR><LF>+CMS ERROR: <err><CR><LF>
+CNMI?	<CR><LF>+CNMI: <mode>,<mt>,<bm>,<ds>,<bfr><CR><LF><CR><LF>OK<CR><LF>
+CNMI=?	<CR><LF>+CNMI: (list of supported <mode>s),(list of supported <mt>s),(list of supported <bm>s),(list of supported <ds>s),(list of supported <bfr>s) <CR><LF><CR><LF>OK<CR><LF>

5.7.2 Description

The "SET" command is used to set the program of reporting new message to TE, where,

<mode> and <bfr> are used to set the mode of reporting the new message notification (including four types: +CMT, +CMTI, +CDSI, +CDS) to the TE.

<mt> is used to set whether reporting the new message to the TE, or storing the new message in the MS and reporting the storage position when a new message is received.

<bm> is not in use currently.

<ds> is used to set whether to report the message state report (+CDSI, +CDS).

The TEST command returns the supported parameter values.

Note: The set value of this command will be cleared to 0 after the MS is restarted. In this case, no new message will be reported. The “AT+CNMI=0,0,0,0,0” mode is not recommended.

5.7.3 Defined Values

<mode>: Set the message notification mode.

0 Buffer the message in the ME. If the buffer of ME is full, the new notification will overwrite the old notification.

1 Send the message notification to the TE directly. When it is impossible to send the notification (e.g. when in the online data mode), the notification will be discarded. (default)

2 Report the message notification and message state report to the TE directly. When it is impossible to send them (e.g. when in the online data mode), the message notification will be buffered in the ME, and will be sent to the TE at a time later.

Note: The message notifications are buffered in the volatile storage. If the MS is powered off before sending the message, the message will probably be lost. Therefore, in case of <mode>=0 or 2, it is not allowed to use direct forwarding of message (<mt>=2 and 3

<mt>: Set the rules of storing and notifying the received messages.

New messages can be stored and notified in the following three modes:

1 If SMS-DELIVER is not stored into MS, SMS-DELIVERs are routed directly to TE.

+CMT: [<reserved>], <length><CR><LF><pdu>

2 If SMS-DELIVER is stored into MS, indication of the memory location is routed to the TE.

+CMTI: <mem>,<index>

3 If SMS-DELIVER is stored into MS, SMS-DELIVER indication is not routed to TE.

4 Special received SMS (whose international code is 61) reported format was as follow (default)

Received SMS:

01/23/09, 11:22:38

Orig Address: 013801000722

Call back Address: 013801000722

User Data: testing

5 Special received SMS reported format was as follow

Received SMS:

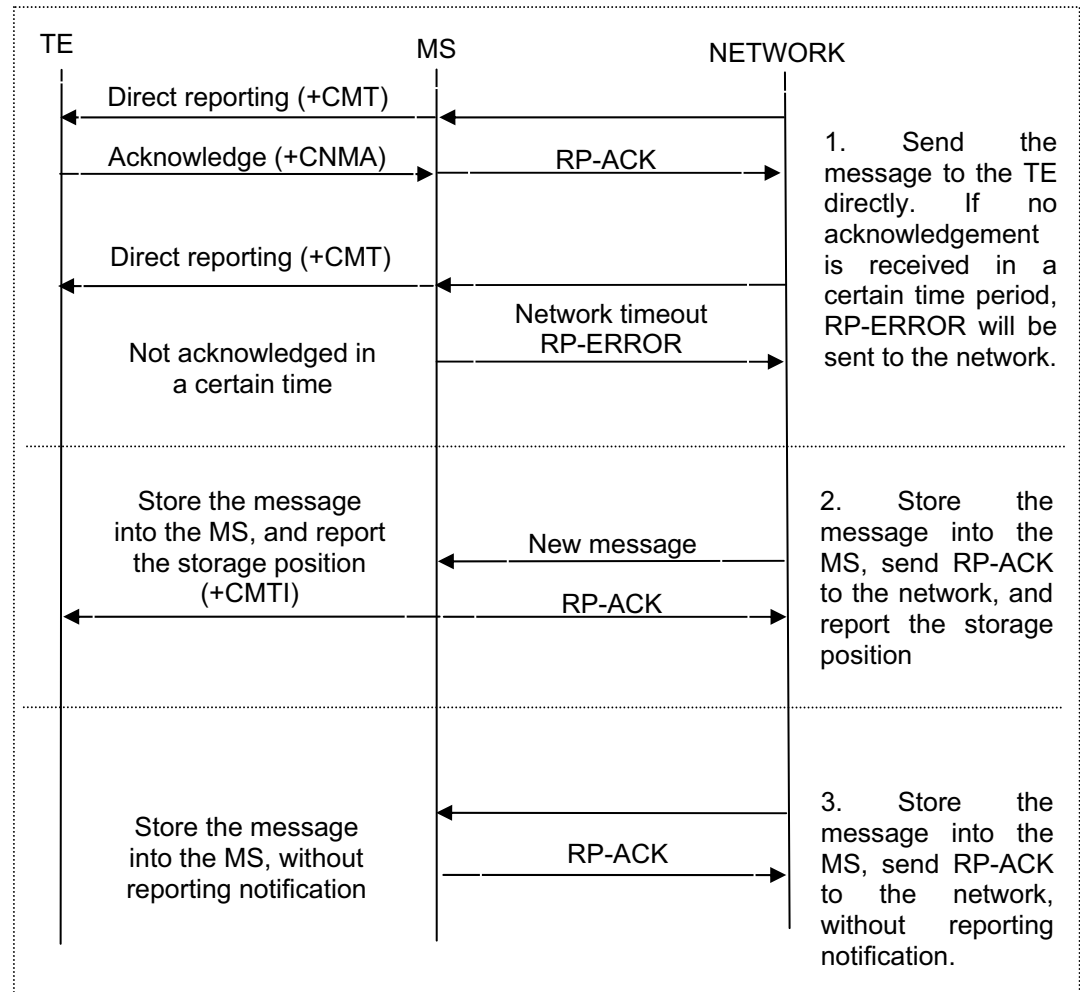
01/23/09, 11:22:38

Orig Address: +8613801000722

Call back Address: +8613801000722

User Data: testing

In the above three modes(1~3), the interaction between TE and MS is shown in the following diagram.



The relationship between the parameter value of <mt> and the mode of storing and notifying various messages is shown in the following table.

<mt>	no class or class 1	class 0 or message waiting indication group (discard)	class 2 or message waiting indication group (store)	class 3
0				
1	+CMTI	[+CMTI]	+CMTI	+CMTI
2	+CMT & +CNMA	+CMT [& +CNMA]	+CMTI	+CMT & +CNMA
3	+CMTI	[+CMTI]	+CMTI	+CMT & +CNMA

Note:

The class of message is given by the TP-DCS domain of the message. For details, see the DCS parameter description of the "+CMGS" command.

+CMT & +CNMA means requiring TE to send a confirmation (+CNMA).

<bm>: For use of setting the cell broadcast information. It is not supported currently.

<ds>: For use of setting the message acknowledgement.

0 Do not send message acknowledgement to the TE.

1 Do not store message acknowledgement in MS, route message acknowledgement directly to TE.

+CDS: <length><CR><LF><pdu>

2 If the message acknowledgement is stored in the MS, a storage position notification will be sent to the TE via "+CDSI".

+CDSI: <mem>,<index>

<bfr>: For use of setting buffer processing after transition from <mode>=0 to <mode>=1, 2.

0 After entering the <mode>1-2, the buffered unsolicited result codes will be sent to the TE at a time.

1 After entering the <mode>1-2, the buffered unsolicited result codes will be emptied.

5.7.4 Informative Examples

1. Set CNMI=1,4,0,0,0.(default)

It indicates that the new class1 messages will be stored in the MS first, and report user by the following special format:

Received SMS:

01/23/09, 11:22:38

Orig Address: +8613801000722

Call back Address: +8613801000722

User Data: testing

Note: If keeping CNMI as the default value, while embedded TCP connection, the module can inform server the process status via SMS.

2. For example, set CNMI=1,1,0,1,0.

It indicates that the new class1 messages will be stored in the MS first, and the storage position will be reported (+CMTI: ME,1}; the message state reports will be reported directly (+CDS:).

When it is impossible to report the message notification (e.g. when in the online data mode), the message notification will be discarded.

5.8 Delete Message +CMGD

5.8.1 Command Syntax

Command	Possible response(s)
+CMGD=<index>[,<delflag>]	<CR><LF>OK<CR><LF> In case of SMS-related error: <CR><LF>+CMS ERROR: <err><CR><LF>
+CMGD=?	<CR><LF>+CMGD: (list of supported <index>s)[,(list of supported <delflag>s)]<CR><LF><CR><LF>OK<CR><LF>

5.8.2 Description

EXECUTION command deletes message from memory <mem1> location <index>. For the setting of <mem1> and description, see the "+CPMS command". If the second parameter <delflag> is present and not set to 0 then the ME shall ignore <index> and follow the rules for <delflag> shown below. If deleting fails, +CMS ERROR: <err> is returned.

TEST command returns the valid memory locations and the supported values of <delflag>.

The TEST command returns the storage position where the message is currently stored, and the supported <delflag> values.

5.8.3 Defined Values

<index>: Storage position of message

<delflag>:

0 (or default) Delete the messages specified by <index>.

1 Delete all read messages from preferred message storage, leaving unread messages stored mobile originated messages (whether sent or not) untouched.

2 Delete all read messages from preferred message storage and sent mobile originated messages, leaving unread messages and unsent mobile originated messages untouched.

3 Delete all read messages from preferred message storage, sent and unsent mobile originated messages leaving unread messages untouched.

4 Delete all messages from preferred message storage including unread messages.

5.9 New Message Acknowledgement to +CNMA

5.9.1 Command Syntax

Command	Possible response(s)
---------	----------------------

+CNMA[=<n>[,<length>[<CR> > <i>PDU is given</i> <ctrl-Z/ESC>]]]	<CR><LF>OK<CR><LF> In case of SMS-related error: <CR><LF>+CMS ERROR: <err><CR><LF>
+CNMA=?	<CR><LF>+CNMA: (list of supported <n>s)<CR><LF><CR><LF>OK<CR><LF>

5.9.2 Description

EXECUTION command confirms reception of a new message which is routed directly to the TE. This acknowledgement command shall be used when +CSMS parameter <service> equals 1. For the usage of this command, see also description of “+CNMI” command.

In PDU mode, it is possible to send either positive (RP-ACK) or negative (RP-ERROR) acknowledgement to the network. Parameter <n> defines which one will be sent.

Optionally, an acknowledgement TPDU (SMS-DELIVER-REPORT for RP-ACK or RP-ERROR) may be sent to the network. The entering of PDU is done similarly as specified in command Send Message +CMGS, except that the format of <ackpdu> is used instead of <pdu>. PDU shall not be bounded by double quotes.

MS shall not send another +CMT or +CDS result code to TE before previous one is acknowledged.

If ME does not get acknowledgement within required time (network timeout), ME should send RP-ERROR to network, and should shall automatically disable routing to TE by setting both <mt> and <ds> values of +CNMI to zero.

To make the MS report the message notification again, you need to set <mt> and <ds> again.

If the command is executed but no message is available for confirmation, the “+CMS ERROR” will be returned: <err>

The TEST command returns the supported <n> values. If only 0 is supported, it indicates that the command does not support TPDU sending.

5.9.3 Defined Values

<n>:

- 0 This option is not supported currently.
- 1 If the sending is successful, acknowledge with “RP-ACK (or receiving buffered result code successfully).
- 2 If the sending is unsuccessful, acknowledge with “RP-ERROR”.

<ackpdu> description:

Basic elements:

Abbr	Reference	p1)	p2)	Description
TP-MTI	TP-Message Type Indicator	M	2b	TP-message type

TP-UDHI	TP-User-Data-Header-Indication	O	b	Indicate that TP-UD has a header
TP-PI	TP-Parameter-Indicator	M	o	Indicate which optional parameters exist
TP-PID	TP-Protocol-Identifier	O	o	Protocol ID
TP-DCS	TP-Data-Coding-Scheme	O	o	Data coding scheme
TP-UDL	TP-User-Data-Length	O	o	User data length
TP-UD	TP-User-Data	O	3)	User data

Note:

- 1) Whether it is mandatory or optional: Mandatory (M) or Optional (O).
- 2) Indicates: Integer (I), Bit (b), 2 bits (2b), octet (o).
- 3) Depends on TP-DCS.

Table 5-1 Bit number

Number of Octets	7	6	5	4	3	2	1	0	
1									TP-MTI, TP-UDHI
1									TP-PI
0,1									TP-PID
0,1									TP-DCS
0,1									TP-UDL
0 to 159									TP-UD

The 7th bit and bits 2~5 of the first byte are not used in SMS-DELIVER-REPORT, and the sender should set them to 0. If any bit of them is not 0, the receiver should ignore them.

Description:

<TP-MTI>: TP-message type. Bits 0 and 1 in the first byte.

bit1 bit0 Message type

0	0	SMS-DELIVER (in the direction SC to MS)
0	0	SMS-DELIVER REPORT (in the direction MS to SC)
1	0	SMS-STATUS-REPORT (in the direction SC to MS)
1	0	SMS-COMMAND (in the direction MS to SC)
0	1	SMS-SUBMIT (in the direction MS to SC)
0	1	SMS-SUBMIT-REPORT (in the direction SC to MS)
1	1	Reserved

< TP-UDHI >: Indicates that TP-UD has a header. It is located in bit 6 in the first byte.

- | | |
|---|---|
| 0 | TP-UD domain contains only messages. |
| 1 | The beginning of TP-UD domain has a header. |

< TP-PI >: Indicates which optional parameters exist. If the bit is set as 1, it means no corresponding parameter exists.

bit 7	bit 6	bit 5	bit 4	bit 3	bit 2	bit 1	bit 0
Extension bit	Reserved	Reserved	Reserved	Reserved	TP-UDL	TP-DCS	TP-PID

<TP-PID>: Protocol ID. The default value set by TE when sending the message is 00000000. If the transmitting address is an E-mail, the TE should fill in 00110010=0x32.

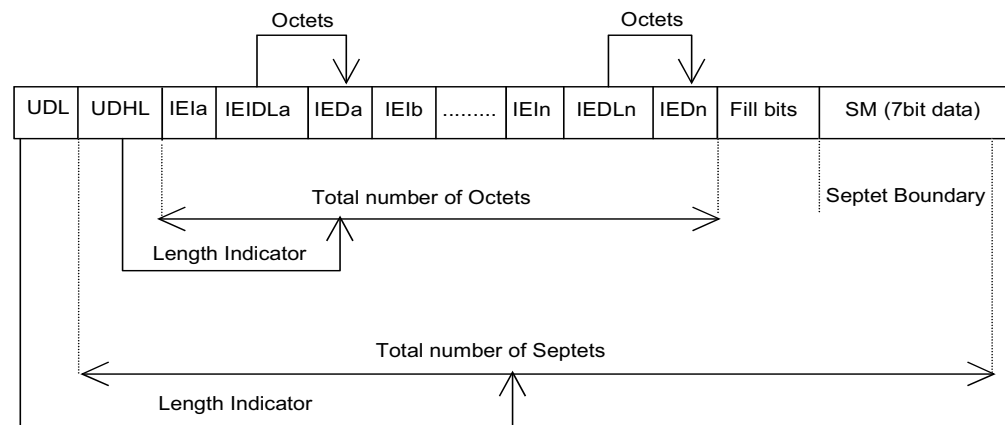
<TP-DCS>: While sending the message, the TE selects the TP-DCS mode.

bit7~bit6(while sending the message, the TE selects the TP-DCS mode)	00, while sending the message, the TE selects this value.	bit5	0	If TE sets bit5 to be 0, it indicates no message is compressed.
			1	If bit5 is 1, it indicates the sent message is compressed, and TE does not select this value.
		bit4	0	If TE sets bit4 to be 0, it indicates that bit1 and bit0 are reserved, and the value is 00.
			1	If bit4 is 1, it indicates that bit1 and bit0 have the meaning of message type (The message type depends on the user's settings. If the message type is set by the user, TE sets bit4 to be 1, e.g. set class 1 or class 2).
		bit3~2 (message code format)	00	GSM 7 bit default code
			01	8bit data
			10	UCS2 code mode. When the user inputs Chinese characters, the TE will select this value.
		bit1~0 (message type, its value is selected by TE according to the user's options)	00	Class 0, provided to the interface to display and reply that the SC has received but not stored it.
			01	Class 1, stored to the MS (i.e., NV), or stored to the SIM card when the MS is full
			10	Class 2, for special use of SIM. After the message is stored, the storage state will be replied to the SC. If the SIM card is full, the SC failure and the reasons will be reported.
11	Class 3, stored to the TE. When the MS receives the message, but has not transmitted it to the TE, it will give a response to the SC.			
bit7~4 (while sending the message, the TE does not	1100 and 1101 (GSM 7 bit code), 1110	bit3	0	The message wait prompt function is invalid. Currently, the functions that require prompting, e.g. enforcement message, E-mail and voice mail, are not supported.
			1	Activate the message waiting prompt function

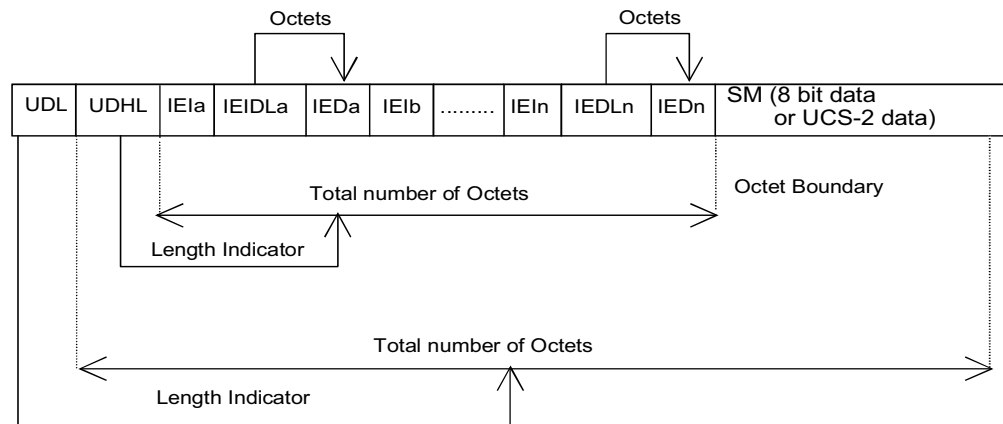
select this TP-DCS mode)	(uncompressed UCS2 code)	bit2	0	Reserved bits, which make no sense.
		bit1~0 (message waiting type)	0 0	With voice message waiting.
			0 1	With fax message waiting.
			1 0	With E-mail message waiting.
			1 1	Message waiting of other unknown types
	1111 (TE does not select this value either)	bit3	0	Reserved bits, which make no sense.
		bit2	0	7bit code
			1	8bit data
		bit1~0	0 0	Class 0, providing display and reply to SC that the message is received but not stored.
			0 1	Class 1, stored to the MS (i.e., NV), or stored to the SIM card
1 0	Class 2, for use of SIM only. After storing it, the storage state is returned to the SC.			
		1 1	Class 3, stored to the TE. When the MS receives the message, but has not transmitted it to the TE, it will give a response to the SC.	

<TP-UDL>: Number of bytes occupied by the “user data” domain. If the value is 0, the “User data” domain does not exist.

<TP-UD>: The “user data” domain may include “user data header”. If it includes the header (namely, the value of bit6 in byte0 is 1), the value of TP-UDL is equal to the length filled in the “User-Data-Header” plus the length of “User-Data”. The value of TP-UDL depends on the specific coding mode. If it is a 7-bit default code, it indicates that there are a total of how many septets; if it is a 8-bit code, it indicates there are a total of how many Octets; if it is a UCS2 code, the TP-UDL still means a total of how many Octets; if there are compressed 7-bit or 8bit or UCS2 codes, the TP-UDL indicates there are a total of how many Octets after compression. The specific representation structure in the “User data” domain is shown in the following diagram:



Format of User data of the default 7bit code



Format of User data of 8bit code or UCS2 code

The above two diagrams show the format of filling in the User data, where IEI means "Information Element Identifier".

5.10 Message storage selection +CPMS

5.10.1 Command Syntax

Command	Possible response(s)
+CPMS=<mem1>[, <mem2>[,<mem3>]]	<CR><LF>+CPMS: <used1>,<total1>,<used2>,<total2>,<used3>,<total3> <CR><LF><CR><LF>OK<CR><LF> In case of MS-related error: <CR><LF>+CME ERROR: <err><CR><LF>
+CPMS?	+CPMS: <mem1>,<used1>,<total1>,<mem2>,<used2>,<total2> , <mem3>,<used3>,<total3><CR><LF><CR><LF>OK<CR><LF> In case of MS-related error: <CR><LF>+CME ERROR: <err><CR><LF>
+CPMS=?	+CPMS: (list of supported <mem1>s),(list of supported <mem2>s), (list of supported <mem3>s) of supported <mem2>s) <CR><LF><CR><LF>OK<CR><LF>

5.10.2 Description

The SET command is used to set the message storage media corresponding to the message read/write operations, and return the current use state of the selected media.

The READ command returns the name and use state of the currently selected media. The TEST command returns all the media types supported by the MS.

5.10.3 Defined Values

<mem1>:

String value. It indicates the media for use of reading and deleting messages. Optional values are:

“SM”, which means the (U)SIM card.

“ME”, which means NV

“SR”, indicate the status report storage place in (U)SIM card

<mem2>:

String value. It indicates the media for use of writing and sending messages. Optional values are:

“SM”, which means the (U)SIM card.

“ME”, which means NV

<mem3>:

String value. It indicates the media for use of storing the received message. The optional values are the same as those of <mem2>.

<total1>:

Integer value. It indicates the total number of messages that can be saved in <mem1>.

<total2>:

Integer value. It indicates the total number of messages that can be saved in <mem2>.

<total3>:

Integer value. It indicates the total number of messages that can be saved in <mem3>.

<used1>:

Integer value. It indicates the total number of messages currently stored in <mem1>.

<used2>:

Integer value. It indicates the total number of messages currently stored in <mem2>.

<used3>:

Integer value. It indicates the total number of messages currently stored in <mem3>.

5.11 Reporting message storage media being full %SMMEMFULL

5.11.1 Command Syntax

Command	Possible response(s)
	<CR><LF>%SMMEMFULL:<mem_type><CR><LF>

5.11.2 Description

When the message storage media overflow, the event will be reported automatically.

5.11.3 Defined Values

<mem_type>:

String value. It indicates the type of the overflowing media.

“SM”, which means the (U)SIM card. (Status will not be reported because of the custom-built requirement of Maxon. The oldest message which stored in SM will be replaced by the new message automatically if SM is full. So there is no “SMMEMFULL” report.)

“ME”, which means NV

5.12 SMSC number command +CSCA

5.12.1 Command Syntax

Command	Possible response(s)
+CSCA=<sca>[,<tosca>]	<CR><LF>OK<CR><LF> In case of MS-related error: <CR><LF>+CME ERROR: <err><CR><LF>
+CSCA?	<CR><LF>+CSCA: <sca>[,<tosca>]<CR><LF><CR><LF>OK<CR><LF> In case of MS-related error: <CR><LF>+CME ERROR: <err><CR><LF>
+CSCA=?	<CR><LF>OK<CR><LF>

5.12.2 Description

The SET command is used to set the SMSC number. For the message in the PDU mode, the setting of this command can be used only if the SMSC-related parameter sc_len has the value of 0 (for the PDU format, see the “+CMGS” command) in the PDU.

5.12.3 Defined Values

<sca>:

String value. It indicates the SMSC number. The number is composed “*”, “#” and “0”-“9”. The number contains 20 characters at most.

<tosca>:

Integer value. It indicates the number type, where “145” means an international call. For the specific values, see also the definition of the “type_addr” parameter in the SC number, as described in the section “Short message sending +CMGS”.

If no <tosca> parameter is included, it is equivalent to the effect that the <tosca> parameter is not modified.

5.13 Message sending +CMGS

5.13.1 Command Syntax

Command	Possible response(s)
if pdu mode (+CMGF=0): +CMGS=<length><CR> <i>PDU</i> <i>given</i> <ctrl-Z/ESC> if text mode (+CMGF=1): +CMGS=<da>[, <toda>] <CR> <i>text</i> <i>entered</i> <ctrl-Z>>	if pdu mode (+CMGF=0): <CR><LF>+CMGS: <mr>[,<ackpdu>]<CR><LF><CR><LF>OK<CR><LF> if text mode (+CMGF=1): <CR><LF>+CMGS: <mr><CR><LF><CR><LF>OK<CR><LF> In case of SMS-related error: <CR><LF>+CMS ERROR: <err><CR><LF>
+CMGS=?	<CR><LF>OK<CR><LF>

5.13.2 Interface Description

Send a message to the network side. The process of sending a message includes two steps:

PDU mode:

First, deliver “+CMGS=<length>” ended with (CR).

After MS returns <CR><LF><greater_than><space>(IRA 13, 10, 62, 32), the TE delivers the PDU packet, which is ended with <ctrl-Z>(IRA 26).

Text mode:

First, deliver “+CMGS=<da>[, <toda>]” ended with (CR).

After MS returns <CR><LF><greater_than><space>(IRA 13, 10, 62, 32), the TE delivers the text, which is ended with <ctrl-Z>(IRA 26).

5.13.3 Defined Values

<length>: The number of actually sent TPDU characters/2. The digits are decimal numbers that range from 0 to 9. The maximum value is 178.

<mr>: Message ID. The digits are decimal numbers that range from 0 to 9. The value range is: 0~255

<ackpdu>: When the value of <service> in "+CSMS" is 1, which is supported by the network, this field will be returned. Unless no SCA exists, the format is the same as the format of PDU. This field is not supported currently.

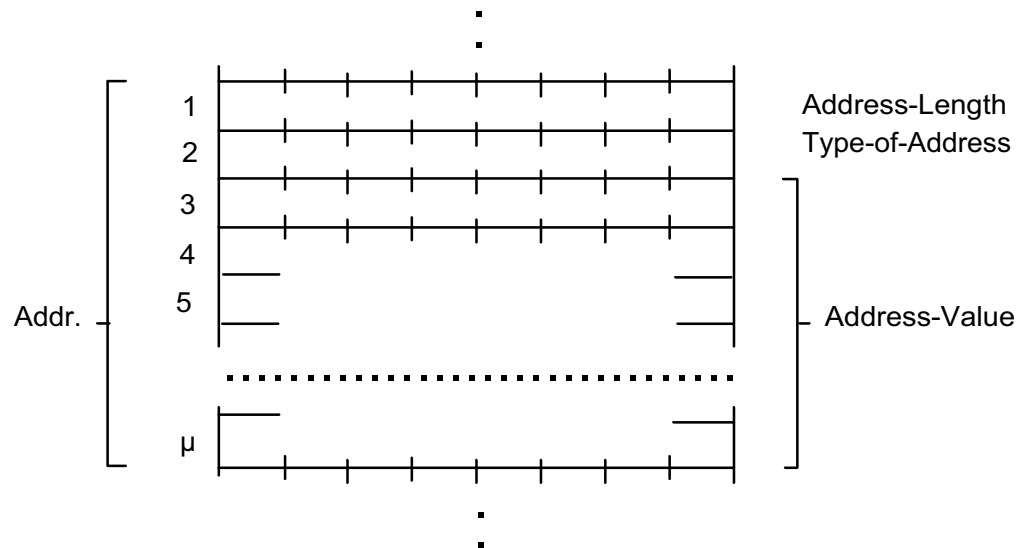
<ctrl-Z>: Identifies the end of a PDU data. The characters are: '0x1A'

<ESC>: Cancels the sending of this message. The characters are: '0x1B'

The structure of the PDU packet is as follows: (The values of the characters described in the packet are: 0~9, A~F, a~f. Two characters make up one Octet value. for example: '23'=0x23, '2a'=0x2a, all are hexadecimal)

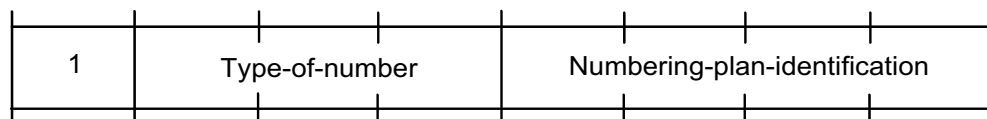
[<SCA>]			
<sc_len>	<type_addr>	<numbers>	TPDU

<SCA> SMSC address. Its structure is as follows:



<sc_len>: Length of the SCA (short message service center number). It is composed of two characters. It indicates the number of characters occupied by <type_addr> and <numbers>/2.

<type_addr>: Number address type. It is composed of two characters. Its structure is as follows:



Type-of-Number(bit6...bit4). The values are as follows:

0 0 0 This value is written when the user does not know the authentication information of the target address number. In this case, the address number is organized at the network side.

0 0 1 This value is selected if the user knows that it is an international number, or believes that it falls in the domestic range.

0 1 0 Domestic number. No prefix or suffix is allowed. This value is selected when the user sends a message to a domestic telephone set.

0 1 1 A specific number in this network. It is used for management or service and cannot be selected by the user.

1 0 1 The number type is the default 7bit code mode of GSM. It is not in use currently.

1 1 0 Short number. It is not in use currently.

1 1 1 Reserved for extension. It is not in use currently.

Numbering-plan-identification(bit3...bit0). The values are as follows:

(Note: It is valid only when the values of bit6...bit4 are 000, 001, 010. In other circumstances, bit3...bit0 are not valid)

0 0 0 0 The number is determined by the numbering plan at the network side.

0 0 0 1 ISDN/telephone numbering plan.

0 0 1 1 Data numbering plan, not in use currently.

0 1 0 0 Telex numbering plan, not in use currently.

1 0 0 0 National numbering plan, not in use currently.

1 0 0 1 Private numbering plan, not in use currently.

1 0 1 0ERMES numbering plan, not in use currently.

<numbers>: Address number. One byte contains two digits. Bit3~bit0 contain the first digit, and bit7~bit4 contain the second digit. Coding sequence of half bytes, as shown in the following example:

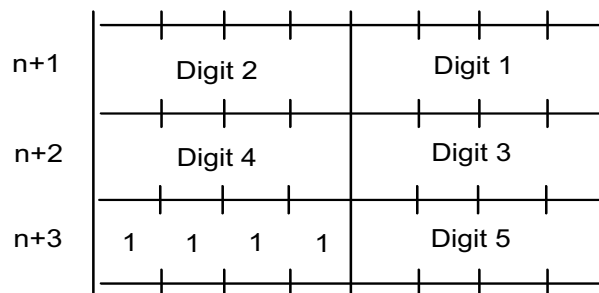


Figure 5-1 Half byte coding with a total of 5 digits

Note: If the number length is an odd number, the highest four digits of this octet should be filled with 1111.

'*': 1010

'#': 1011

'a': 1100

'b': 1101

'c': 1110

For example:

If the number of SCA is 13902900, then the <numbers> is: 31099200

If the number length of SCA is an odd number: 139029001, then <numbers> is:
31099200F1

If the number type is: 'A1', the corresponding <SCA> will be 05a131099200.

If the type is indicated as an international number 'A1', while the number 13902900 is a domestic number, it is necessary to additionally dial 86 before the number, hence the corresponding <SCA> in this case is 06a16831099200.

The data structure of TPDU is as follows:

1Octet								1Oct	2Oct~12Oct	1Oct	1Oct	1Oct	1Oct	
RP	UDHI	SRR	VPF		RD	MTI		MR	DA	PID	DCS	VP	UDL	UD
Bit7	Bit6	Bit5	Bit4	Bit3	Bit2	Bit1	Bit0							

<MTI>: Message type. The values are as follows:

bit1 bit0

- 0 0 SMS-DELIVER (in the direction SC to MS)
- 0 0 SMS-DELIVER REPORT (in the direction MS to SC)
- 1 0 SMS-STATUS-REPORT (in the direction SC to MS)
- 1 0 SMS-COMMAND (in the direction MS to SC)
- 0 1 SMS-SUBMIT (in the direction MS to SC)
- 0 1 SMS-SUBMIT-REPORT (in the direction SC to MS)
- 1 1 Reserved

<RD>: It indicates whether the SC needs to receive the short message that is still stored in the SC and has the MR and DA identical with those of the message sent previously from the same OA. The values are as follows:

- 0 To receive
- 1 Not to receive

<VPF>: It indicates the validity of the VP field and the format. The values are as follows:

bit4 bit3

- 0 0 The VP field is invalid
- 1 0 The VP field is valid and the format is "relative". Only this format is available currently.
- 0 1 The VP field is valid, and the format is "enhanced".
- 1 1 The VP field is valid, and the format is "absolute".

<RP>: Indicates the setting of the path of the message reply. The values are as follows:

- 0 No setting.

1 Settings are available. It indicates that the reply has the SC number settings identical with those of the message, and the return path is the same.

<UDHI>: Indicates the user data header. The values are as follows:

0 The user data segment contains only contents of the message.

1 In addition to the message, the user data segment contains a data header.

<SRR>: State report request indication

0 State report information about successful sending of a message is not required.

1 State report information about successful sending of a message is required.

<MR>: Message ID. Value range: 0~255.

<DA>: DA (destination address), same as defined in SCA. There are a total of 2~120 octets. Therefore, the longest address in the DA segment contains 20 digits.

<PID>: Protocol indication. The values are as follows:

PID							
Bit7	Bit6	Bit5	Bit4	Bit3	Bit2	Bit1	Bit0

Bit7 bit6 (here we assume bit 7 = 0 and bit 6 = 0)

0 0 Allocate bits 0..5. The values are defined below.

1 0 Allocate bits 0..5. The values are defined below.

0 1 Reserved.

1 1 Allocate bits 0..5, for special purpose of SC.

The values of Bit5 are as follows:

0 no interworking, but SME-to-SME protocol

1 telematic interworking (in this case, the values of bits 4...0 are valid)

Bit4...bit0 telematic devices type indication:

If the values are 1 0 0 1 0, it indicates Email. Other values are not supported currently.

<DCS>: Coding mode of user data. The values are as follows:

Bit7...bit4			Bit3.....bit0	
00xx	Bit5	0: Message is not compressed	Bit1 bit0 indicate message type 0 0 : Class 0, providing display and reply to the SC that the message is received but not stored. 0 1 : Class 1, stored to the NV (or SIM card if the NV is full)	
		1: Message is compressed. Not supported currently.		
	Bit4	0: Bit1 and bit0 are reserved	1 0 : Class 2, for use of SIM only. After the message is stored, the storage state will be replied to the	

		1: Bit1 and bit0 indicate message type	<p>SC. If the SIM card is full, the SC failure and the reasons will be reported.</p> <p>1 1 : Class 3, stored to the TE. When the MS receives the message, but has not transmitted it to the TE, it will give a response to the SC.</p> <p>Bit3 bit2 message type indication</p> <p>0 0 : GSM 7 bit default code</p> <p>0 1 : 8bit data</p> <p>1 0 : UCS2 code mode. When the user inputs Chinese characters, this value will be selected.</p> <p>1 1 : Reserved.</p>
0100 ... 1011	Reserved.		
1100	The message contents are discarded. The message waiting prompt is given, and the user data adopts GSM 7 bit coding		The settings of Bit3...0 are identical with the settings made in case of bit7...4=1101
1101	The message is stored. The message waiting prompt is given, and the user data adopts GSM 7 bit coding		<p>Bit3 Prompt indication. The values are as follows:</p> <p>0: The message waiting prompt function is invalid</p> <p>1: Activate the message waiting prompt function</p> <p>Bit2 Reserved. The value is 0.</p> <p>Bit1 bit0 message type indication</p> <p>0 0 : With voice message waiting.</p> <p>0 1 : With fax message waiting.</p> <p>1 0 : With E-mail message waiting.</p> <p>1 1 : Message waiting of other unknown types</p>
1110	The message is stored. The message waiting prompt is given, and the user data adopts uncompressed UCS2 coding		The settings of Bit3...0 are identical with the settings made in case of bit7...4=1101

1111	Data coding/message class	<p>Bit2 Reserved. The value is 0.</p> <p>Bit2 Coding mode of message. The values are as follows: 0: GSM 7 bit default code 1: 8bit data</p> <p>Bit1 bit0 message type indication 0 0 : Class 0, providing display and reply to the SC that the message is received but not stored. 0 1 : Class 1, stored to the NV (or SIM card if the NV is full) 1 0 : Class 2, for use of SIM only. After the message is stored, the storage state will be replied to the SC. If the SIM card is full, the SC failure and the reasons will be reported. 1 1 : Class 3, stored to the TE. When the MS receives the message, but has not transmitted it to the TE, it will give a response to the SC.</p>
------	---------------------------	--

<VP>: Indicates the validity period, which starts from the message being received by the SC. If VP=00, this field is lacking. The duration is expressed as follows:

VP value	Description
0 to 143	(VP + 1) x 5 minutes
144 to 167	12 hours + ((VP -143) x 30 minutes)
168 to 196	(VP - 166) x 1 day
197 to 255	(VP - 192) x 1 week

<UDL>: Length of user data. The value of UDL depends on the specific coding mode.

In case of default 7-bit coding, it indicates there are a total of how many septets.

In case of 8bit coding, it indicates there are a total of how many Octets.

In case of UCS2 coding, UDL indicates there are a total of how many Octets.

In case of compressed 7-bit or 8bit or UCS2 coding, UDL indicates there are a total of how many Octets after compression.

For the compressed message codes, the data length of <UD> should not be more than 160septets; for the message of uncompressed codes, the <UD> length should not be more than 140Octets.

<UD>: User data. The data validity depends on the parameter UDL.

5.13.4 Examples

The SMSC number is: 13902900, and the message is sent to the number: 13901000453, and the contents are: 0x53 0x4E 0x4E 0x3A (“华为” for UCS2 encode), then:

If “+CSCA” has set SCA, then

a) When sending the message, the <SCA> field can be left uncompleted. The <SCA> value is obtained through the value set via “+CSCA” command.

```
AT+CMGS=17(CR)
```

```
>81000B813109010054F3001804534E4E3A \x1A
```

Note: Data interpretation, 81(<RP~MTI>)00(<MR>)0B(<DA-len>)81(<DA-type>)3109010054F3(<DA-numbers>)00(<PID>)18(<DCS>)04(<UDL>)534E4E3A (<UD>)\x1A(<ctrl-Z>)

b) When sending the message, the <SCA> field can also be completed, and the <SCA> value can be obtained directly from the PDU packet.

```
AT+CMGS=17
```

```
>05a13109920081000B813109010054F3001804534E4E3A \x1A
```

or

```
AT+CMGS=17
```

```
>0081000B813109010054F3001804534E4E3A \x1A
```

(In this case, since <sc_len>=0,when sending the message, the <SCA> can be obtained through the value set via the “+CSCA” command)

If “+CSCA” has not set SCA, then

When sending the message, the <SCA> field must be completed, and the <SCA> value can be obtained directly from the PDU packet.

```
AT+CMGS=17
```

```
>05a13109920081000B813109010054F3001804534E4E3A \x1A
```

5.14 Message storage command +CMGW

5.14.1 Command Syntax

Command	Possible response(s)
---------	----------------------

if pdu mode (+CMGF=0): +CMGW=<length>[,<stat>]< CR> PDU <i>is</i> given <ctrl-Z/ESC> if text mode (+CMGF=1): +CMGW[=<oa/da>[,<tooa /toda>[,<stat>]]]<CR> text is entered <ctrl-Z/ESC>	<CR><LF>+CMGW: <index><CR><LF><CR><LF>OK<CR><LF> In case of SMS-related error: <CR><LF>+CMS ERROR: <err><CR><LF>
+CMGW=?	<CR><LF>OK<CR><LF>

5.14.2 Interface Description

Store a message to the <mem2> storage set via the “+CPMS” command.

5.14.3 Defined Values

PDU mode:

<length>: Number of actually sent TPDU characters/2.

<mr>: Message ID. The digits are decimal numbers that range from 0 to 9. The value range is: 0~255.

<ctrl-Z>: Identifies the end of a PDU data. The characters are: '0x1A'

<ESC>: Cancels the sending of this message. The characters are: '0x1B'

<stat>: Storage state of the message. The values are as follows: (In the PDU mode, the default value is 0)

- 0 Unread message that has been received
- 1 Read message that has been received
- 2 Unsent message that has been stored
- 3 Sent message that has been stored
- 4 Any message (This value is only applicable to the “+CMGL” command)

<index>: Position number in the storage. The digits are decimal numbers that range from 0 to 9. The value range is 0~maximum capacity of storage-1.

The PDU packet structure is consistent with the description of the “+CMGS” command.

Text mode:

<oa./da>: Originating address/Destination address. Same as defined in SCA. Total 2~120octets. Therefore, the longest address in the OA segment contains 20 digits.

5.15 Message list command +CMGL

5.15.1 Command Syntax

Command	Possible response(s)
+CMGL[=<stat>]	In case of pdu mode and successful execution of command: [<CR><LF>+CMGL: <index>, <stat>, [<reserved>], <length><CR><LF><pdu> [<CR><LF>+CMGL:<index>, <stat>, [<reserved>], <length><C R><LF><pdu> [...]]<CR><LF>]<CR><LF>OK<CR><LF> In case of text mode and successful execution of command: [<CR><LF>+CMGL:<index>, <stat>, <oa/da>, <reserved>[, <sct s>]<CR><LF>< Otherwise: <CR><LF>+CMS ERROR: <err><CR><LF>
+CMGL=?	<CR><LF>+CMGL: (list of supported <stat>s) <CR><LF><CR><LF>OK<CR><LF>

5.15.2 Description

The EXECUTION command returns all messages from <mem1>, which are in the state specified by the parameter <stat>. If the message state is “Unread message that has been received”, the state of the message in the storage will be converted to “Read message that has been received” after the command is executed successfully.

When the <stat> takes on the default value, the EXECUTION command is equivalent to the SET command +CMGL=0.

The TEST command returns all the supported stat values.

5.15.3 Defined Values

PDU mode:

<stat> Message type. The default value is 0:

- 0 Unread messages that has been received
- 1 Read message that has been received
- 2 Unsent message that has been stored
- 3 Sent message that has been stored
- 4 Any message

<index>: Integer value, which indicates the position in the storage.

<reserved>: Reserved.

<length>: Integer value, which indicates the number of bytes of TPDU data.

<pdu>: Protocol data unit. The data structure is as follows:

[<SCA>]			
<sc_len>	<type_addr>	<numbers>	TPDU

Where, the <SCA>, <sc_len>, <type_addr>, and <numbers> fields are defined in the same way as in the section "Message sending command".

For sent message, the data structure of TPDU is the same as defined in "Message sending command". For the received message, the data structure of TPDU is as follows:

1 Oct							2 Oct~12 Oct	1 Oct	1 Oct	7 Oct	1Oct	
TP-MTI	MMS	0	0	SRI	UDHI	RP	OA	PID	DCS	SCTS	UDL	UD
Bit0	Bit1	Bit2	Bit3	Bit4	Bit5	Bit6	Bit7					

<MTI>: Same as defined in the section "Message sending command".

<MMS>: Indicates whether there are more messages to be sent.

0 Nonexistent

1 Existent

<SRI>: Indicates whether the SME (short message entity) has requested a state report.

0 Nonexistent

1 Existent

<UDHI>: Same as defined in the section "Message sending command".

<RP>: Same as defined in the section "Message sending command".

<OA>: Source address. Same as defined in SCA. Total 2~12Octets. Therefore, the longest address in the OA segment contains 20 digits.

<PID>: Protocol indication. Same as defined in the section "Message sending command".

<DCS>: Coding mode of user data. Same as defined in the section "Message sending command".

<SCTS>: Time chop of SMC, including year, month, day, hour, minute, second and time difference. Time difference refers to the difference of time between the local time and the Greenwich standard time.

<UDL>: User data length. Same as defined in the section "Message sending command".

<UD>: The length of a specific user data depends on the UDL.

Text mode:

<stat> Message type. The default value is 0:

"REC UNREAD" unread SMS

"REC READ" read SMS

"STO UNSENT"	stored and unsent SMS
"STO SENT"	stored and sent SMS
"ALL"	all SMS

5.16 Read a message +CMGR

5.16.1 Command Syntax

Command	Possible response(s)
+CMGR=<index>	In case of pdu mode and successful execution of command: <CR><LF>+CMGR: <stat>,[<reserved>],<length><CR><LF><pdu><CR><LF><CR><LF>OK<CR><LF> or: <CR><LF>+CMS ERROR: <err><CR><LF>
+CMGR=?	<CR><LF>OK<CR><LF>

5.16.2 Description

The EXECUTION command returns the messages whose storage position is "index" from <mem1>. If the message state is "Unread message that has been received", the state of the message in the storage will be converted to "Read message that has been received" after the command is executed successfully.

The TEST command returns OK.

5.16.3 Defined Values

<index>: Integer value, which indicates the position in the storage.

<stat> Message type:

- 0 Unread message that has been received
- 1 Read message that has been received
- 2 Unsent message that has been stored
- 3 Sent message that has been stored

<reserved>: Reserved.

<length>: Integer value, which indicates the number of bytes of PDU data.

<pdu>: Protocol data unit. Its format is the same as defined in section "Message list command".

5.17 Message bearer domain command +CGSMS

5.17.1 Command Syntax

Command	Possible response(s)
+CGSMS=<service>	<CR><LF>OK<CR><LF>
+CGSMS?	<CR><LF>+CGSMS:<service><CR><LF><CR><LF>OK<CR><LF>
+CGSMS=?	<CR><LF>+CGSMS: (list of supported <service>s)<CR><LF><CR><LF>OK<CR><LF>

5.17.2 Description

The SET command is used to set the message bearer domain, namely, selection of CS/PS domain.

The READ command returns the current message bearer domain.

The TEST command returns the supported parameter values.

5.17.3 Defined Values

<service>:

- 0 Only select the PS domain (not supported currently)
- 1 Only select the CS domain (not supported currently)
- 2 Prefer the PS domain
- 3 Prefer the CS domain

5.18 More Messages to Send +CMMS

5.18.1 Command Syntax

Command	Possible response(s)
+CMMS=[<n>]	<CR><LF>OK<CR><LF>
+CMMS?	<CR><LF>+CMMS:<n><CR><LF><CR><LF>OK<CR><LF>
+CMMS=?	<CR><LF>+CMMS: (list of supported <n>s)<CR><LF><CR><LF>OK<CR><LF>

5.18.2 Description

Set command controls the continuity of SMS relay protocol link. When feature is enabled (and supported by network) multiple messages can be sent much faster as link is kept open.

Test command returns supported values as a compound value.

5.18.3 Defined Values

<n>:

- 0 disable
- 1 keep enabled until the time between the response of the latest message send command (+CMGS, +CMSS, etc.) and the next send command exceeds 1-5 seconds (the exact value is up to ME implementation), then ME shall close the link and TA switches <n> automatically back to 0
- 2 enable (if the time between the response of the latest message send command and the next send command exceeds 1-5 seconds (the exact value is up to ME implementation), ME shall close the link but TA shall not switch automatically back to <n>=0)

5.19 Send Message SMS MO +MMC

5.19.1 Command Syntax

Command	Possible response(s)
+MMCSMSMO<rcv_number>[<call_back>]<msg><CR>	<CR><LF>+MMC SMSMO<CR><LF>OK<CR><LF> After sending: <CR><LF>SENDING SUCCESS<CR><LF> for success <CR><LF>SENDING FAIL<CR><LF> for sending failed

5.19.2 Description

The command used to send MO message as the special format. If the SMS has been sent successfully, it should return SENDING SUCCESS value to TE. Otherwise, it returned SENDING FAIL value to TE for sending failed.

5.19.3 Defined Values

: space

<rcv_number>: Recipient number

<call_back>: Callback number(optional)

<msg>: Message, each byte of msg has to have the code larger than 0x1F, so it will be available with 0x20

5.20 Received Message Reported Directly

5.20.1 Command Syntax

Command	Possible response(s)
	<CR><LF>ReceivedSMS:<CR><LF><date>,<time><CR><LF>OrigAddress:<orig_number><CR><LF>CallbackAddress:<call_back><CR><LF>UserData:<msg><CR><LF>

5.20.2 Description

This is an unsolicited command, used to inform user while receiving a new SMS.

5.20.3 Defined Values

: space

<date>: the date format is dd/mm/yy

<time>: the time format is hh:mm:ss

<orig_number>: Originate number

<call_back>: Callback number(optional)

<msg>: Message, each byte of msg has to have the code larger than 0x1F, so it will be available with 0x20

5.21 Auto delete SMS control command %AUTODELSMS

5.21.1 Command Syntax

Command	Possible response(s)
%AUTODELSMS=[<n>]	<CR><LF>OK<CR><LF>
%AUTODELSMS?	<CR><LF>%AUTODELSMS:<n><CR><LF><CR><LF>OK<CR><LF>
%AUTODELSMS=?	<CR><LF>%AUTODELSMS: (list of supported <n>s)<CR><LF><CR><LF>OK<CR><LF>

5.21.2 Description

Set command controls whether SMS could be deleted by default when storage is full and a new SMS receives.

Test command returns supported values as a compound value.

5.21.3 Defined Values

<n>:



- 0 Disable the feature, module can't receive incoming SMS when storage is full.
- 1 Enable the feature, module can delete older SMS and receive incoming SMS when storage is full. (Default)

6 Supplementary service commands

6.1 Call forwarding number and conditions +CCFC

6.1.1 Command Syntax

Command	Possible response(s)
+CCFC=<reason>,<mode> [,<number>,<type> [,<class> [,<reserved1>[,<reserved2> [,<time>]]]]]	When <mode>=2 <CR><LF>+CCFC: <status>,<class1>[,<number>,<type> [,<reserved1>,<reserved2>[,<time>]]] <CR><LF>+CCFC: <status>,<class2>[,<number>,<type> [,<reserved1>,<reserved2>[,<time>]]] [...]<CR><LF><CR><LF>OK<CR><LF> When <mode>≠2 <CR><LF>OK<CR><LF> or <CR><LF>+CME ERROR: <err><CR><LF>
+CCFC=?	<CR><LF>+CCFC: (list of supported <reason>s)<CR><LF><CR><LF>OK<CR><LF>

6.1.2 Description

This command allows control of the call forwarding supplementary service. Registration, erasure, activation, deactivation, and status query are supported. When querying the status of a network service (<mode>=2) the response line for 'not active' case (<status>=0) should be returned only if service is not active for any <class>.

Test command returns reason values supported as a compound value.

6.1.3 Defined Values

<reason>:

- 0 unconditional
- 1 mobile busy

- 2 no reply
- 3 not reachable
- 4 all call forwarding (refer 3GPP TS 22.030 [19])
- 5 all conditional call forwarding (refer 3GPP TS 22.030 [19])

<mode>:

- 0 disable
- 1 enable
- 2 query status
- 3 registration
- 4 erasure

<number>: string type phone number of forwarding address in format specified by <type>

<type>: type of address octet in integer format default 145 when dialling string includes international access code character "+", otherwise 129

<subaddr>: string type subaddress of format specified by <satype>

<satype>: type of subaddress octet in integer format default 128

<classx> is a sum of integers each representing a class of information (default 7):

- 1 voice (telephony)
- 2 data (refers to all bearer services; with <mode>=2 this may refer only to some bearer service if TA does not support values 16, 32, 64 and 128)
- 4 fax (facsimile services)
- 8 short message service
- 16 data circuit sync
- 32 data circuit async
- 64 dedicated packet access
- 128 dedicated PAD access

<time>:

1...30 when "no reply" is enabled or queried, this gives the time in seconds to wait before call is forwarded, default value 20

<status>:

- 0 not active
- 1 active

6.2 Call waiting +CCWA

6.2.1 Command Syntax

Command	Possible response(s)
+CCWA=[<n>[,<mode>[,<class>]]]	When <mode>=2 <CR><LF>+CCWA: <status>,<class1> [<CR><LF>+CCWA: <status>,<class2> [...]]<CR><LF><CR><LF>OK<CR><LF> When <mode>≠2 <CR><LF>OK<CR><LF> or <CR><LF>+CME ERROR: <err><CR><LF>
+CCWA?	<CR><LF>+CCWA: <n><CR><LF><CR><LF>OK<CR><LF>
+CCWA=?	<CR><LF>+CCWA: (list of supported <n>s) <CR><LF><CR><LF>OK<CR><LF>

6.2.2 Description

This command allows control of the Call Waiting supplementary service. Activation, deactivation and status query are supported. <n> used to disable/enable show the result code presentation status to the TE. The detail please refer to +CCWA.

Test command return the supported value of <n>.

6.2.3 Defined Values

<n> (sets/shows the result code presentation status to the TE):

- 0 disable
- 1 enable

<mode> (when <mode> parameter is not given, network is not interrogated):

- 0 disable
- 1 enable
- 2 query status

<classx> is a sum of integers each representing a class of information (default 7):

- 1 voice (telephony)
- 2 data (refers to all bearer services; with <mode>=2 this may refer only to some bearer service if TA does not support values 16, 32, 64 and 128)
- 4 fax (facsimile services)
- 8 short message service
- 16 data circuit sync
- 32 data circuit async

64 dedicated packet access

128 dedicated PAD access

<status>:

0 not active

1 active

<number>: string type phone number of calling address in format specified by <type>

<type>: type of address octet in integer format (refer +CMGS subclause, the definition of type_addr)

<reserved>: optional string type alphanumeric representation of <number> corresponding to the entry found in phonebook.

<CLI validity>:

0 CLI valid

1 CLI has been withheld by the originator.

2 CLI is not available due to interworking problems or limitations of originating network.

When CLI is not available (<CLI validity>=2), <number> shall be an empty string ("") and <type> value will not be significant.

6.3 Identification Presentation of Call waiting +CCWA

6.3.1 Command Syntax

Command	Possible response(s)
	<CR><LF>+CCWA: <number>,<type>,<class>,[<reserved>][,<CLI validity>]<CR><LF>

6.3.2 Description

When the Call Waiting supplementary service is active an unsolicited report will be generated when there is a incoming call.

6.3.3 Defined Values

<classx> is a sum of integers each representing a class of information (default 7):

1 voice (telephony)

2 data (refers to all bearer services; with <mode>=2 this may refer only to some bearer service if TA does not support values 16, 32, 64 and 128)

4 fax (facsimile services)

8 short message service

16 data circuit sync

32 data circuit async

64 dedicated packet access

128 dedicated PAD access

<number>: string type phone number of calling address in format specified by <type>

<type>: type of address octet in integer format (refer +CMGS subclause, the definition of type_addr)

<reserved>: optional string type alphanumeric representation of <number> corresponding to the entry found in phonebook.

<CLI validity>:

0 CLI valid

1 CLI has been withheld by the originator.

2 CLI is not available due to interworking problems or limitations of originating network.

When CLI is not available (<CLI validity>=2), <number> shall be an empty string ("") and <type> value will not be significant.

6.4 Call related supplementary services +CHLD

6.4.1 Command Syntax

Command	Possible response(s)
+CHLD=[<n>]	<CR><LF>OK<CR><LF> or <CR><LF>+CME ERROR: <err><CR><LF>
+CHLD=?	<CR><LF>+CHLD: (list of supported <n>s)<CR><LF><CR><LF>OK<CR><LF>

6.4.2 Description

This command supplies operation for call related supplementary services.

The default value of <n> is 2. If <n> is not provided it equals +CHLD =2 .

It is recommended (although optional) that test command returns a list of operations which are supported. The call number required by some operations shall be denoted by "x". The range of x is 1-9.

6.4.3 Defined Values

<n>

0 Releases all held calls or sets User Determined User Busy (UDUB) for a waiting call.

- 1 Releases all active calls (if any exist) and accepts the other (held or waiting) call.
- 1X Releases a specific active call X.
- 2 Places all active calls (if any exist) on hold and accepts the other (held or waiting) call.
- 2X Places all active calls on hold except call X with which communication shall be supported.
- 3 Adds a held call to the conversation.
- 4 Not support now

6.5 Configure Supplementary service notifications +CSSN

6.5.1 Command Syntax

Command	Possible response(s)
+CSSN=[<n>[,<m>]]	<CR><LF>OK<CR><LF>
+CSSN?	<CR><LF>+CSSN: <n>,<m><CR><LF><CR><LF>OK<CR><LF>
+CSSN=?	<CR><LF>+CSSN: (list of supported <n>s),(list of supported <m>s) <CR><LF><CR><LF>OK<CR><LF>

6.5.2 Description

The set command enables/disables the presentation of notification result codes from TA to TE. Includes +CSSI and +CSSU.

6.5.3 Defined Values

<n> (parameter sets/shows the +CSSI result code presentation status to the TE):

0 disable

1 enable

<m> (parameter sets/shows the +CSSU result code presentation status to the TE):

0 disable

1 enable

6.6 Supplementary service notifications +CSSU

6.6.1 Command Syntax

Command	Possible response(s)
---------	----------------------

	<CR><LF>+CSSU: <code2>[,<index>[,<number>,<type> [,<subaddr>,<satype>]]]<CR><LF>
--	--

6.6.2 Description

If +CSSN enable +CSSU(<m>=1) the notifications will be reported to TE.

6.6.3 Defined Values

<code2> 0-10. The values related to HOLD/RETRIEVE are 2 and 3.

2: Call is keeping(calling)

3: Call is resumed(calling)

<index>,<number>,<type>,<subaddr>,<satype> are not supported for the moment.

6.7 Unstructured supplementary service data +CUSD

6.7.1 Command Syntax

Command	Possible response(s)
+CUSD=[<n>[,<str>[,<dcs>]]]	<CR><LF>OK<CR><LF> or <CR><LF>+CME ERROR: <err><CR><LF>
+CUSD?	<CR><LF>+CUSD: <n><CR><LF><CR><LF>OK<CR><L F>
+CUSD=?	<CR><LF>+CUSD: (list of supported <n>s)<CR><LF><CR><LF>OK<CR>< LF>

6.7.2 Description

This command allows control of the Unstructured Supplementary Service Data (USSD). Both network and mobile initiated operations are supported.

<n> is used to disable/enable the presentation of an unsolicited result code (USSD response from the network, or network initiated operation) +CUSD: <m>[,<str>,<dcs>] to the TE. In addition, value <n>=2 is used to cancel an ongoing USSD session.

When <str> is given, a mobile initiated USSD-string or a response USSD-string to a network initiated operation is sent to the network. The response USSD-string from the network is returned in a subsequent unsolicited +CUSD result code.

n=2 is used to quit current USSD session.

The default value of set command +CUSD is 0.

Test command returns the supported value of <n>

6.7.3 Defined Values

<n>:

- 0 disable the result code presentation to the TE
- 1 enable the result code presentation to the TE
- 2 cancel session (not applicable to read command response)

<str>: string type USSD-string (when <str> parameter is not given, network is not interrogated):

- if <dc> indicates that 3GPP TS 23.038 [25] 7 bit default alphabet is used:
- if TE character set other than "HEX" (refer command Select TE Character Set +CSCS): MT/TA converts GSM alphabet into current TE character set according to rules of 3GPP TS 27.005 [24] Annex A
- if TE character set is "HEX": MT/TA converts each 7-bit character of GSM alphabet into two IRA character long hexadecimal number (e.g. character Π (GSM 23) is presented as 17 (IRA 49 and 55))
- if <dc> indicates that 8-bit data coding scheme is used: MT/TA converts each 8-bit octet into two IRA character long hexadecimal number (e.g. octet with integer value 42 is presented to TE as two characters 2A (IRA 50 and 65))

<dc>: 3GPP TS 23.038 [25] Cell Broadcast Data Coding Scheme in integer format (default 0)

<m>:

- 0 no further user action required (network initiated USSD-Notify, or no further information needed after mobile initiated operation)
- 1 further user action required (network initiated USSD-Request, or further information needed after mobile initiated operation)
- 2 USSD terminated by network
- 3 other local client has responded
- 4 operation not supported
- 5 network time out

6.8 Unsolicited report of CUSD +CUSD

6.8.1 Command Syntax

Command	Possible response(s)
	<CR><LF>+CUSD: <m>[,<str>,<dc>]<CR><LF>

6.8.2 Description

MS will send this unsolicited report to TE when the network respond the USSD service from the TE.

+CUSD: <m>[,<str>,<dc>]

6.8.3 Defined Values

<m>:

0 no further user action required (network initiated USSD-Notify, or no further information needed after mobile initiated operation)

1 further user action required (network initiated USSD-Request, or further information needed after mobile initiated operation)

2 USSD terminated by network

3 other local client has responded

4 operation not supported

5 network time out

<str>: string type USSD-string (when <str> parameter is not given, network is not interrogated):

- if <dc> indicates that 3GPP TS 23.038 [25] 7 bit default alphabet is used:
- if TE character set other than "HEX" (refer command Select TE Character Set +CSCS): MT/TA converts GSM alphabet into current TE character set
- if TE character set is "HEX": MT/TA converts each 7-bit character of GSM alphabet into two IRA character long hexadecimal number
- if <dc> indicates that 8-bit data coding scheme is used: MT/TA converts each 8-bit octet into two IRA character long hexadecimal number

<dc>: Cell Broadcast Data Coding Scheme in integer format (default 0)

7 Serializer Interface Description

7.1 Diag port setting %DIAGPORTSEL

7.1.1 Command Syntax

Command	Possible response(s)
%DIAGPORTSEL=<n>	<CR><LF>OK<CR><LF>
%DIAGPORTSEL?	<CR><LF>%DIAGPORTSEL:<n><CR><LF><CR><LF>OK<CR><LF>
%DIAGPORTSEL=?	<CR><LF>%DIAGPORTSEL:(list of supported <n>s) <CR><LF><CR><LF>OK<CR><LF>

7.1.2 Description

The SET command of this command is used to set the active diag port. The READ command is used to read the current set port value. The TEST command is used to return the value range of the set port value.

7.1.3 Defined Values

<n>:

- 0 UART3(Default value)
- 1 Diag port of USB

8

Description of Security Setting Interface

8.1 PIN password modifying +CPWD

8.1.1 Command Syntax

Command	Possible response(s)
+CPWD=<fac>,<oldpwd>,<newpwd>	<CR><LF>OK<CR><LF> In case of MS-related error: <CR><LF>+CME ERROR: <err><CR><LF>
+CPWD=?	<CR><LF>+CPWD: list of supported (<fac>,<pwdlength>)s<CR><LF><CR><LF>OK<CR><LF> In case of MS-related error: <CR><LF>+CME ERROR: <err><CR><LF>

8.1.2 Description

The EXECUTION command is used to modify the equipment lock function (e.g. PIN).

The TEST command returns the supported device, and the maximum length of the password corresponding to this equipment.

8.1.3 Defined Values

<fac>: Specify the object of operation of this command (only supporting SIM card, the value is "SC").

"SC": SIM card PIN

"P2": SIM card PIN2

"AB": No support for a while

<oldpwd>,<newpwd>: Old password, new password, string type, and maximum length are specified by the parameter <pwdlength>.

<pwdlength>: Maximum length of the equipment lock password.

8.2 PIN enabling and query function +CLCK

8.2.1 Command Syntax

Command	Possible response(s)
+CLCK=<fac>,<mode>[,<passwd>[,<class>]]	<p>In case of <mode>=2 and successful execution of command: <CR><LF>+CLCK: <status><CR><LF><CR><LF>OK<CR><LF></p> <p>In case of <mode>≠2 and successful execution of command: <CR><LF>OK<CR><LF></p> <p>In case of MS-related error: <CR><LF>+CME ERROR: <err><CR><LF></p>
+CLCK=?	<CR><LF>+CLCK: (list of supported <fac>s)<CR><LF><CR><LF>OK<CR><LF>

8.2.2 Description

The EXECUTION command is used to lock, unlock and query the MS or network equipment <fac>. Generally, the password needs to be input.

The TEST command returns the supported devices.

8.2.3 Defined Values

<fac>: Specify the object of operation of this command (only supporting SIM card, the value is "SC").

"SC": SIM card (if this command is configured, the password must be input when powering on the MS)

<mode>:

- 0 Unblock
- 1 Lock
- 2 Query state

< status >:

- 0 Unactivated
- 1 Activated

<passwd>: String type; same as the password set via "modify password +CPWD".

<class> (7 by default):

- 1 Voice call
- 2 Data

- 4 Fax
- 8 SMS

8.3 PIN management command +CPIN

8.3.1 Command Syntax

Command	Possible response(s)
+CPIN=<pin>[,<newpin>]]	<CR><LF>OK<CR><LF> In case of MS-related error: <CR><LF>+CME ERROR: <err><CR><LF>
+CPIN?	<CR><LF>+CPIN: <code><CR><LF><CR><LF>OK<CR><LF>
+CPIN=?	<CR><LF>OK<CR><LF>

8.3.2 Description

The READ command is used to indicate whether password input request exists.

The SET command is used to check and unlock the PIN and PIN2.

If the current password input request is PIN or PIN2, input "+CPIN=<pin>" to check.

If the current password input request is PUK or PUK2, input "+CPIN=<pin>,<newpin>" to unlock. The first parameter is SIM PUK or SIM PUK2, and the second parameter is <newpin>, which is a new PIN or PIN2.

When using the SET command, if the no PIN input request exists currently, an error message "+CME ERROR" will be returned.

Note: Verifying PIN or PUK during an emergency call may make the call disconnected.

8.3.3 Defined Values

<pin>, <newpin>: String

<code>: String (without quotation marks)

READY: MT without password input request

SIM PIN: UICC/SIM PIN password request

SIM PUK: UICC/SIM PUK password request, to unblock the SIM PIN which was blocked for 3 verification failure.

SIM PIN2: PIN2 password request
SIM PUK2: PUK2 password request, to unblock the SIM PIN2 which was blocked for 3 verification failure

8.4 PIN management command %CPIN (new feature)

8.4.1 Command Syntax

Command	Possible response(s)
%CPIN=<pin>[,<newpin>]	<CR><LF>OK<CR><LF> In case of MS-related error: <CR><LF>+CME ERROR: <err><CR><LF>
%CPIN?	<CR><LF>%CPIN: <code>[,<times>],<puk_times>,<pin_times>,<puk2_times>,<pin2_times><CR><LF><CR><LF>OK<CR><LF> In case of MS-related error: <CR><LF>+CME ERROR: <err><CR><LF>
%CPIN=?	<CR><LF>OK<CR><LF>

8.4.2 Description

The READ command is used to indicate whether password input request exists. The remaining password input times will be given.

The SET command is used to check and unlock the PIN and PIN2.

If the current password input request is PIN or PIN2, input “+CPIN=<pin>” to check.

If the current password input request is PUK or PUK2, input “+CPIN=<pin>,<newpin>” to unlock. The first parameter is SIM PUK or SIM PUK2, and the second parameter is <newpin>, which is a new PIN or PIN2.

When using the SET command, if the no PIN input request exists currently, an error message “+CME ERROR” will be returned.

Note: Verifying PIN or PUK during an emergency call may make the call disconnected.

8.4.3 Defined Values

<pin>, <newpin>: String

<code>: String (without quotation marks)

READY: MT without password input request-

SIM PIN: UICC/SIM PIN password request

SIM PUK: UICC/SIM PUK password request to unblock the SIM PIN which was blocked for 3 verification failure.

SIM PIN2: PIN2 password request

SIM PUK2: PUK2 password request to unblock the SIM PIN2 which was blocked for 3 verification failure

<times>: In terms of the remaining input times, for PIN and PIN2, the maximum input times is 3 times; for PUK and PUK2, the maximum input times are 10 times.

Note: If there is password verify request, <times> will be the remaining retry times. Otherwise, <times> will be empty.

<puk_times>: remaining PUK verify times, the maximum verify times is 10 times.

<pin_times>: remaining PIN verify times, the maximum verify times is 3 times.

<puk2_times>: remaining PUK2 verify times, the maximum verify times is 10 times.

<pin2_times>: remaining PIN2 verify times, the maximum verify times is 3 times.

9 Data Service Interface Description

9.1 PDP environment setting command +CGDCONT

9.1.1 Command Syntax

Command	Possible response(s)
+CGDCONT=<cid>[,<PDP_type>[,<APN>[,<PDP_addr>[,<d_comp>[,<h_comp>]]]]]	<CR><LF>OK<CR><LF>
+CGDCONT?	<CR><LF>+CGDCONT: <cid>, <PDP_type>, <APN>, <PDP_addr>, <d_comp>, <h_comp>[<CR><LF>+CGDCONT: <cid>, <PDP_type>, <APN>, <PDP_addr>, <d_comp>, <h_comp>[...]]<CR><LF><CR><LF>OK<CR><LF>
+CGDCONT=?	<CR><LF>+CGDCONT: (range of supported <cid>s), <PDP_type>,,,(list of supported <d_comp>s),(list of supported <h_comp>s) [<CR><LF>+CGDCONT: (range of supported <cid>s), <PDP_type>,,,(list of supported <d_comp>s), (list of supported <h_comp>s)[...]]<CR><LF><CR><LF>OK<CR><LF>

9.1.2 Description

A group of setting environments indexed by <cid> are stored locally. Each stored setting environment contains a group of parameters related to PDP. The SET command stores a group of PDP-related parameters to the setting environment indexed by <cid>. Initially, each setting environment is not defined. After a group of parameters are stored via the SET command, the setting environment enters the "defined" state. The number of defined setting environments that can be stored depends on the value range of <cid>.

A special SET command "+CGDCONT= <cid>" will clear all parameters in the setting environment indicated by <cid>.

The READ command returns all the parameter values of the defined setting environments. The setting environments are displayed by means of linefeed.

The TEST command returns all supported values. In the response, they are displayed one by one by using "PDP_type" values supported by MS as index. Each entry takes a determined PDP_type value, and includes the supported value ranges of other parameters under the value of PDP_type. The entries are displayed by means of linefeed.

9.1.3 Defined Values

<cid>:

1-16: Index value of PDP setting environment. Other PDP-related commands can be used for invoking the storage position through this index value.

<PDP_type>:

String value. It indicates the type of the packet switching protocol.

"IP": IP protocol

"PPP": End-to-end protocol

<APN>:

String value. It indicates the access point domain name of the connected GGSN or external network.

<PDP_addr>:

String value. It indicates the address of MSI.

<d_comp>:

A numerical value, controlling the compression of PDP data.

0 No compression.

1 Compression.

If no <d_comp> is included, it is equivalent to the effect that the <d_comp> is 0.

<h_comp>:

A numerical value, controlling the compression of PDP header.

0 No compression.

1 Compression.

If no <h_comp> is included, it is equivalent to the effect that the <h_comp> is 0.

9.1.4 Informative Examples

After executing the following commands consecutively, the results are as follows:

Command 1: AT+CGDCONT=?

Result 1:

+CGDCONT: (1-16),"IP",,,(0-2),(0-3)

+CGDCONT: (1-16),"PPP",,,(0-2),(0-3)

+CGDCONT: (1-16),"IPV6",,,(0-2),(0-3)

Note: This command supports two kinds of packet switching protocols: "IP" and "PPP". The TEST command lists the values of other parameters supportable by each protocol.

Command 2: AT+CGDCONT?

Result 2:

+CGDCONT:1,"IP","vcol.com",,,0,0

OK

Note: The MS stores 1 PDP setting environment currently. The <cid> of this setting environment is 1.

Command 3: AT+CGDCONT=16,"PPP","abc.com","10.111.145.233",1,1

Result 3:

OK

Note: This command stores 1 new BDP setting environment in the MS. The <cid> is 16.

Command 4: AT+CGDCONT?

Result 4: +CGDCONT:1,"IP","vcol.com",,,0,0

+CGDCONT:16,"PPP","abc.com","10.111.145.233",1,1

OK

Note: Now the MS has an additional PDP setting environment whose <cid> is 16.

Command 5: AT+CGDCONT=16

Result 5:

OK

Note: Clear the PDP setting environment whose <cid>=16

Command 6: AT+CGDCONT?

Result 6:

+CGDCONT:1,"IP","vcol.com",,,0,0

OK

Note: The PDP setting environment whose <cid>=16 in the MS has been cleared.

9.2 DS traffic reset %DSFLOWCLR

9.2.1 Command Syntax

Command	Possible response(s)
%DSFLOWCLR	<CR><LF>OK<CR><LF>

9.2.2 Description

This command clears the DS traffic to zero, including the DS accumulated connection time, DS accumulated transmitting traffic, DS accumulated receiving traffic, last DS connection time, last DS transmitting traffic, and last DS receiving traffic (for description of these 6 entries, see also “%DSFLOWQRY” command). All the default values of the above 6 data entries are set to 0 at the time of delivery.

9.3 DS traffic query %DSFLOWQRY

9.3.1 Command Syntax

Command	Possible response(s)
%DSFLOWQRY	<CR><LF>%DSFLOWQRY:<last_ds_time>,<last_tx_flow>,<last_rx_flow>,<total_ds_time>,<total_tx_flow>,<total_rx_flow><CR><LF><CR><LF>OK<CR><LF>

9.3.2 Description

This command is used to query the last DS connection time and traffic, and DS accumulated connection time and traffic. If in the online_data state currently, the last DS refers to the current DS; otherwise, it refers to the last generated DS before this. DS accumulated connection time and traffic refer to: Accumulated values of DS connection and traffic generated from the last clearing-to-zero to the current time.

Note: The data rate here is computed on the RLC layer.

9.3.3 Defined Values

All parameters of this interface are reported in 16 hexadecimal numbers with a fixed length. For example: last_ds_time is a 8-digit hexadecimal number, so the possible values are: 00000000-FFFFFFFF. The numbers composed of less than 8 digits shall be preceded by 0s to make up 8 digits. The 0000001A is equivalent to “26” in decimal. In the hexadecimal, all letters are upper-case “A”-“F” rather than lower-case “a”-“f”.

<last_ds_time>:

00000000-FFFFFFFF, 8-digit hexadecimal number, indicating the last DS connection time, unit: s.

<last_tx_flow>:

0000000000000000-FFFFFFFFFFFFFFFF, 16-digit hexadecimal number, indicating the last DS transmitting traffic, unit: byte.

<last_rx_flow>:

0000000000000000-FFFFFFFFFFFFFFFF, 16-digit hexadecimal number, indicating the last DS receiving traffic, unit: byte.

<total_ds_time>:

00000000-FFFFFFFF, 8-digit hexadecimal number, indicating the DS accumulated connection time, unit: s.

<total_tx_flow>:

0000000000000000-FFFFFFFFFFFFFFFF, 16-digit hexadecimal number, indicating the DS accumulated transmitting traffic, unit: byte.

<total_rx_flow>:

0000000000000000-FFFFFFFFFFFFFFFF, 16-digit hexadecimal number, indicating the DS accumulated receiving traffic, unit: byte.

9.4 DS traffic reporting %DSFLOWRPT

9.4.1 Command Syntax

Command	Possible response(s)
	<CR><LF>%DSFLOWRPT:<curr_ds_time>,<tx_rate>,<rx_rate>,<curr_tx_flow>,<curr_rx_flow>,<qos_tx_rate>,<qos_rx_rate><CR><LF>

9.4.2 Description

When the MS is in the online_data state, this proactive message is sent once every other 2s. The reported contents include the connection time of this DS, current transmitting rate, current receiving rate, current DS transmitting traffic, current DS receiving traffic, the PDP connection transmitting rate determined after negotiation with network side, the PDP connection receiving rate determined after negotiation with network side.

Note:

1. The data rate here is computed on the RLC layer.
2. There is no DS traffic reporting when use IPSTACK to transmit data to itself, because the data did not be transmitted to the network.

9.4.3 Defined Values

All parameters of this interface are reported in 16 hexadecimal numbers with a fixed length. For example: last_ds_time is a 8-digit hexadecimal number, so the possible values are: 00000000-FFFFFFFF. The numbers composed of less than 8 digits shall be preceded by 0s to make up 8 digits. The 0000001A is equivalent to "26" in decimal. In the hexadecimal, all letters are upper-case "A"- "F" rather than lower-case "a"- "f".

<curr_ds_time>:

00000000-FFFFFFFF, 8-digit hexadecimal number, indicating the current DS connection time, unit: s.

<tx_rate>:

00000000-FFFFFFFF, 8-digit hexadecimal number, indicating the current transmitting rate, unit: bps.

<rx_rate>:

00000000-FFFFFFFF, 8-digit hexadecimal number, indicating the current receiving rate, unit: bps.

<curr_tx_flow>:

0000000000000000-FFFFFFFFFFFFFFFF, 16-digit hexadecimal number, indicating the current DS transmitting traffic, unit: byte.

<curr_rx_flow>:

0000000000000000-FFFFFFFFFFFFFFFF, 16-digit hexadecimal number, indicating the current DS receiving traffic, unit: byte.

<qos_tx_rate>:

00000000-FFFFFFFF, 8-digit hexadecimal number, indicating the PDP connection transmitting rate determined after negotiating with the network side, unit: Bps.

<qos_rx_rate>:

00000000-FFFFFFFF, 8-digit hexadecimal number, indicating the PDP connection receiving rate determined after negotiating with the network side, unit: Bps.

9.5 3G Quality of Service Profile (Negotiated) +CGEQNEG

9.5.1 Command Syntax

Command	Possible Response(s)
+CGEQNEG =[<cid>[,<cid>[, ...]]]	+CGEQNEG: <cid>, <Traffic class> ,<Maximum bitrate UL> , <Maximum bitrate DL> ,<Guaranteed bitrate UL> , <Guaranteed bitrate DL> ,<Delivery order> ,<Maximum SDU size> ,<SDU error ratio> ,<Residual bit error ratio> ,<Delivery of erroneous SDUs> ,<Transfer delay> ,<Traffic handling priority> [<CR><LF>+CGEQNEG: <cid>, <Traffic class> ,<Maximum bitrate UL> , <Maximum bitrate DL> ,<Guaranteed bitrate UL> , <Guaranteed bitrate DL> ,<Delivery order> ,<Maximum SDU size> ,<SDU error ratio> ,<Residual bit error ratio> ,<Delivery of erroneous SDUs> ,<Transfer delay> ,<Traffic handling priority> [...]]

+CGEQNEG=?	+CGEQNEG: (list of <cid>s associated with active contexts)
------------	--

9.5.2 Description

This command allows the TE to retrieve the negotiated QoS profiles returned in the Activate PDP Context Accept message.

The execution command returns the negotiated QoS profile for the specified context identifiers, <cid>s. The QoS profile consists of a number of parameters, each of which may have a separate value.

The test command returns a list of <cid>s associated with active contexts.

9.5.3 Defined values

<cid>: a numeric parameter which specifies a particular PDP context definition (see +CGDCONT commands), the value range is 1 to 16.

<Traffic class>: a numeric parameter that indicates the type of application for which the UMTS bearer service is optimised.

0 - conversational

1 - streaming

2 - interactive

3 - background

Other values are reserved.

<Maximum bitrate UL>: a numeric parameter that indicates the maximum number of kbits/s delivered to UMTS (up-link traffic) at a SAP. As an example a bitrate of 32kbit/s would be specified as '32' (e.g. +CGEQNEG:...,32, ...)

<Maximum bitrate DL>: a numeric parameter that indicates the maximum number of kbits/s delivered by UMTS (down-link traffic) at a SAP. As an example a bitrate of 32kbit/s would be specified as '32' (e.g. +CGEQNEG:...,32, ...)

<Guaranteed bitrate UL>: a numeric parameter that indicates the guaranteed number of kbits/s delivered to UMTS (up-link traffic) at a SAP (provided that there is data to deliver). As an example a bitrate of 32kbit/s would be specified as '32' (e.g. +CGEQNEG:...,32, ...)

<Guaranteed bitrate DL>: a numeric parameter that indicates the guaranteed number of kbits/s delivered by UMTS (down-link traffic) at a SAP (provided that there is data to deliver). As an example a bitrate of 32kbit/s would be specified as '32' (e.g. +CGEQNEG:...,32, ...)

<Delivery order>: a numeric parameter that indicates whether the UMTS bearer shall provide in-sequence SDU delivery or not.

0 - no

1 - yes

Other values are reserved.

<Maximum SDU size>: a numeric parameter that (1,2,3,...) indicates the maximum allowed SDU size in octets

<SDU error ratio>: a string parameter that indicates the target value for the fraction of SDUs lost or detected as erroneous. SDU error ratio is defined only for conforming traffic. The value is specified as 'mEe'. As an example a target SDU error ratio of $5 \cdot 10^{-3}$ would be specified as '5E3' (e.g. +CGEQNEG:..., "5E3",...).

<Residual bit error ratio>: a string parameter that indicates the target value for the undetected bit error ratio in the delivered SDUs. If no error detection is requested, Residual bit error ratio indicates the bit error ratio in the delivered SDUs. The value is specified as 'mEe'. As an example a target residual bit error ratio of $5 \cdot 10^{-3}$ would be specified as '5E3' (e.g. +CGEQNEG:..., "5E3",...)

<Delivery of erroneous SDUs>: a numeric parameter that indicates whether SDUs detected as erroneous shall be delivered or not.

0 - no
1 - yes
2 - no detect

Other values are reserved.

<Transfer delay>: a numeric parameter (0,1,2,...) that indicates the targeted time between request to transfer an SDU at one SAP to its delivery at the other SAP, in milliseconds

<Traffic handling priority>: a numeric parameter (1,2,3,...) that specifies the relative importance for handling of all SDUs belonging to the UMTS bearer compared to the SDUs of other bearers.

If a value is omitted for a particular class then the value is considered to be unspecified.

10 Phonebook Service Interface Description

10.1 Phonebook memory selection +CPBS

10.1.1 Command Syntax

Command	Possible response(s)
+CPBS=<storage> [,<reserved>]	<CR><LF>OK<CR><LF> In case of MS-related error: <CR><LF>+CME ERROR: <err><CR><LF>
+CPBS?	<CR><LF>+CPBS: <storage>[,<used>,<total>]<CR><LF><CR><LF>OK<CR><LF> In case of MS-related error: <CR><LF>+CME ERROR: <err><CR><LF>
+CPBS=?	<CR><LF>+CPBS: (list of supported <storage>s)<CR><LF><CR><LF>OK<CR><LF>

10.1.2 Description

The SET command is used to select a phonebook memory. The initial value after restarting the MS is "SM". Other phonebook-related commands will be operated by using the memory selected via this command.

The READ command returns the currently selected phonebook memory. Optionally, the number of entries in use and the maximum number of entries should also be returned.

The TEST command returns the supported phonebook memory types.

10.1.3 Defined Values

<storage> : Phonebook memory type. Currently, only "SM", "ON", "EN" are supported.

"SM" SIM/UICC phonebook

"ON" SIM/USIM own numbers (MSISDNs) list

"EN" SIM/USIM emergency number

<reserved>: Reserved.

<used>: Integer value. It indicates the number of entries in use in the currently selected memory.

<total>: Integer value. It indicates the maximum number of entries in the currently selected memory.

10.2 Phonebook reading %CPBR

10.2.1 Command Syntax

Command	Possible response(s)
%CPBR=<index1> [,<index2>]	[<CR><LF>%CPBR: <index1>,<number>,<type>,<text>,<coding>[,<email>]][...] <CR><LF>%CPBR: <index2>,<number>,<type>,<text>,<coding>[,<email>]<CR> <LF>]<CR><LF>OK<CR><LF> In case of MS-related error: <CR><LF>+CME ERROR: <err><CR><LF>
%CPBR=?	<CR><LF>%CPBR: (list of supported <index>s),[<nlength>],[<tlength>],[<mlenth>]<CR><LF><CR> <LF>OK<CR><LF> In case of MS-related error: <CR><LF>+CME ERROR: <err><CR><LF>

10.2.2 Description

This command returns the phonebook entries between positions index1 and index2 in the currently selected phonebook memory. If no entry exists between index1 and index2, the following will be returned:

+CME ERROR: not found

Alternatively, you can input index1 only, and only the phonebook entries in the position index1 will be returned.

The TEST command returns the position range of the currently selected phonebook memory, and the maximum length of <number>, <text> and <email>.

10.2.3 Defined Values

<index1>, <index2>, <index>: Integer value. It indicates the position in the phonebook memory. The values of index1 and index2 are less than or equal to the "total" field returned by the "+CPBS?" command.

<number>: String type, telephone number.

<type>: Number type: “145” means an international call. For the specific values, see also the definition of the “type_addr” parameter in the SC number, as described in the section “Short message sending +CMGS”.

<text>: String type. It indicates a name. In case coding=1, it indicates that the <text> is a hexadecimal text value of the original data.

<coding>: Coding scheme. It means the character code of the <text> field, and specifies the language.

0 GSM 7 bit Default Alphabet

1 RAW mode (namely, upload the <text> in the format of original data).

<email>: String type. It indicates the email address. not supported Currently.

<nlength>: Integer value. It indicates the maximum length of the telephone number.

<tlength>: Integer value. It indicates the maximum length of the name.

<mlength>: Integer value. It indicates the maximum length of the email. (currently not supported)

10.3 Phonebook writing %CPBW

10.3.1 Command Syntax

Command	Possible response(s)
%CPBW=[<index>][,<number>[,<type>[,<text>,<coding>[,<email>]]]]	<CR><LF>OK<CR><LF> In case of MS-related error: <CR><LF>+CME ERROR: <err><CR><LF>
%CPBW=?	<CR><LF>%CPBW: (list of supported <index>s),[<nlength>], (list of supported <type>s),[<tlength>],[<mlength>]<CR><LF><CR><LF>OK<CR><LF> In case of MS-related error: <CR><LF>+CME ERROR: <err><CR><LF>

10.3.2 Description

This command writes the phonebook entries into the position specified by “index” in the currently selected phonebook memory. If only “index” is included in the command parameter, the phonebook entry at the position corresponding to “index” will be deleted. If the “index” field is omitted, but the “number” field is included in the parameter, this phonebook entry will be written to the first empty position. If no empty position is available in this case, the following will be reported:

+CME ERROR: memory full

The TEST command returns the position range of the currently selected phonebook memory, the maximum length of the “number” field, all values of the “type” field,

maximum length of the “text” field, and maximum length of the “email” field. When storing the phonebook, all input lengths must fall within the maximum length range.

10.3.3 Defined Values

<index>: Integer value. It indicates the position in the phonebook memory.

<number>: String type, telephone number. (legal characters only include: '0' – '9', '*', '#', '+', '(', ')', '-'. But '(', ')', '-' will be ignored)

<type>: Number type: “145” means international call. For the specific values, see also the definition of the “type_addr” parameter in the SC number, as described in the section “Short message sending +CMGS”.

<text>: String type. It indicates a name(no support character 'enter', '').

<coding>: Coding scheme. It means the character code of the <text> field, and specifies the language.

0 GSM 7 bit Default Alphabet

1 RAW mode (namely, upload the <text> in the format of original data).

<email>: String type. It indicates the email address. Currently not supported

<nlength>: Integer value. It indicates the maximum length of the telephone number.

<tlength>: Integer value. It indicates the maximum length of the name.

<mlength>: Integer value. It indicates the maximum length of the email. (currently not supported)

10.3.4 Informative Examples

For example: AT%CPBW = 1,"28780808",129,"80534E4E3A",1

note:data explain 1(the location of this record int the memory); "28780808"(telephone number); 129(number style); "80534E4E3A"(name 华为); 1(encode format of name UCS2)

11 System Setting Interface Description

11.1 RSSI change indication %RSSI

11.1.1 Command Syntax

Command	Possible response(s)
	<CR><LF>%RSSI: <rssi><CR><LF>

11.1.2 Description

When the change of RSSI is more than 5dBm, the MS will report this indication to the TE.

11.1.3 Defined Values

<rssi>: Strength of the receiving signal. The values are defined as follows:

- 0 Equal to or less than -113 dBm
- 1 -111 dBm
- 2...30 -109... -53 dBm
- 31 Equal to or higher than -51 dBm
- 99 Unknown or unmeasurable.

11.2 Unsolicited report control command %CURC

11.2.1 Command Syntax

Command	Possible response(s)
%CURC=<mode>	<CR><LF>OK<CR><LF>

%CURC?	<CR><LF>%CURC:<mode><CR><LF><CR><LF>OK<CR><LF>
%CURC=?	<CR><LF>%CURC: (list of supported <mode>s)<CR><LF> <CR><LF>OK<CR><LF>

11.2.2 Interface Description

The SET command is used to set mode value to open or close unsolicited reports. The unsolicited reports it can control are listed below: %DSFLOWRPT, %RSSI, %MODE, %SIMST, %SRVST, %MODE, %EARST, %SMMEMFULL. The unsolicited reports are closed if the mode value is set to 0 and the unsolicited reports are open if the mode value is set to 1. The default value of mode is set to 0. So, “%CURC=1” should be executed if all the unsolicited reports need to be open.

The READ command returns the current mode value.

The TEST command returns the value range it supports.

Unsolicited report is disabled after reset.

11.2.3 Defined Values

<mode>:

- 0 the unsolicited reports closed (default value)
- 1 the unsolicited reports open

11.3 Service state change indication %SRVST

11.3.1 Command Syntax

Command	Possible response(s)
	<CR><LF>%SRVST:<srv_status><CR><LF>

11.3.2 Description

When the service state changes, the MS will report the new service state to the TE.

11.3.3 Defined Values

<srv_status>: System service state. The values are as follows:

- 0 No service.
- 1 Restricted service.
- 2 Valid service
- 3 Restricted regional service.

4 Power-saving and deep sleep state

11.4 SIM state change indication %SIMST

11.4.1 Command Syntax

Command	Possible response(s)
	<CR><LF>%SIMST:<sim_state>

11.4.2 Interface Description

When the USIM card state changes, the MS will report the new state to the TE. At the same time, report the lock state of USIM card.

11.4.3 Defined Values

<sim_state>: USIM card state. The values are as follows:

- 0 Invalid USIM card state or pin code locked
- 1 Valid USIM card state
- 2 USIM is invalid in case of CS
- 3 USIM is invalid in case of PS
- 4 USIM is invalid in case of either CS or PS
- 255 USIM card is not existent,

11.5 System mode change event indication %MODE

11.5.1 Command Syntax

Command	Possible response(s)
	<CR><LF>%MODE:<sys_mode>[,<sys_submode>]<CR><LF>

11.5.2 Interface Description

When the system mode or sub-mode changes, the MS will report this indication to the TE.

11.5.3 Defined Values

<sys_mode>: System mode. The values are as follows:

- 0 No service.
- 1 AMPS mode (not in use currently)

- 2 CDMA mode (not in use currently)
- 3 GSM/GPRS mode
- 4 HDR mode
- 5 WCDMA mode
- 6 GPS mode

<sys_submode>: System sub mode. The values are as follows:

- 0 No service.
- 1 GSM mode
- 2 GPRS mode
- 3 EDEG mode
- 4 WCDMA mode
- 5 HSDPA mode
- 6 HSUPA mode
- 7 HSDPA mode and HSUPA mode

11.6 System information query %SYSINFO

11.6.1 Command Syntax

Command	Possible response(s)
%SYSINFO	<CR><LF>%SYSINFO:< srv_status >,< srv_domain >,< roam_status >,< sys_mode >,< sim_state >,<reserved>,<sys_submode>]<CR><LF><CR><LF>OK<CR><LF>
%SYSINFO?	<CR><LF>ERROR<CR><LF>
%SYSINFO=?	<CR><LF>ERROR<CR><LF>

11.6.2 Interface Description

This command is used to query the current system information, e.g. system service state, domain, roaming or not.

11.6.3 Defined Values

<srv_status>: System service state. The values are as follows:

- 0 No service.
- 1 Restricted service
- 2 Valid service
- 3 Restricted regional service.

4 Power-saving and deep sleep state

<srv_domain>: System service domain. The values are as follows:

- 0 No service.
- 1 Only CS service
- 2 Only PS service
- 3 PS+CS service
- 4 CS and PS not registered, searching

<roam_status>: Roaming status. The values are as follows:

- 0 Non roaming state
- 1 Roaming state

<sys_mode>: System mode. The values are as follows:

- 0 No service.
- 1 AMPS mode (not in use currently)
- 2 CDMA mode (not in use currently)
- 3 GSM/GPRS mode
- 4 HDR mode
- 5 WCDMA mode
- 6 GPS mode

<sim_state>: SIM card state. The values are as follows:

- 0 Invalid USIM card state or pin code locked
- 1 Valid USIM card state
- 2 USIM is invalid in case of CS
- 3 USIM is invalid in case of PS
- 4 USIM is invalid in case of either CS or PS
- 255 USIM card is not existent,

<reserved>:reserved. E618 used it to indicate the simlock state

<sys_submode>:System sub mode, the values are as follows:

- 0: No service
- 1: GSM mode
- 2: GPRS mode
- 3: EDGE mode
- 4: WCDMA mode
- 5: HSDPA mode

- 6: HSUPA mode
- 7: HSDPA mode and HSUPA mode

11.7 System configuration reference setting %SYSCFG

11.7.1 Command Syntax

Command	Possible response(s)
%SYSCFG= <mode>,<acqorder>,<band>,<roam>,<srvdomain>	<CR><LF>OK/ERROR<CR><LF>
% SYSCFG?	<CR><LF>%SYSCFG:<mode>,<acqorder>,<band>,<roam>,<srvdomain><CR><LF><CR><LF>OK<CR><LF>
%SYSCFG=?	<CR><LF>OK<CR><LF>

11.7.2 Description

This command is used to set the characteristics such as system mode, GW access sequence, band, roaming support and domain.

11.7.3 Defined Values

<mode> system mode reference:

- 2 Automatic search
- 13 GSM ONLY
- 14 WCDMA ONLY
- 16 No change

<acqorder> Network access sequence reference:

- 0 Automatic search
- 1 GSM first, WCDMA later
- 2 WCDMA first, GSM later
- 3 No change

<band> The band of frequency relate to selection of mode, which is actually up to the performance of MS. The parameter is HEX string, whose value is as follows or with the exception of 0x3FFFFFFF and 0x40000000 parameter as combination:

00080000 (CM_BAND_PREF_GSM_850)	GSM 850
00000080 (CM_BAND_PREF_GSM_DCS_1800)	GSM DCS systems
00000100 (CM_BAND_PREF_GSM_EGSM_900)	Extended GSM 900

00000200 (CM_BAND_PREF_GSM_PGSM_900)	Primary GSM 900
00100000 (CM_BAND_PREF_GSM_RGSM_900)	Railway GSM 900
00200000 (CM_BAND_PREF_GSM_PCS_1900)	GSM PCS
00400000 (CM_BAND_PREF_WCDMA_I_IMT_2000)	WCDMA IMT 2000
00800000 (CM_BAND_PREF_WCDMA_II_PCS_1900)	WCDMA_II_PCS_1900
04000000 (CM_BAND_PREF_WCDMA_V_850)	WCDMA_V_850
00020000 (CM_BAND_PREF_WCDMA_VIII_900)	WCDMA_VIII_900
3FFFFFFF (All bands)	All Bands
40000000 (Not change bands)	Not change bands
<roam> Roaming support:	
0	Not supported
1	Roaming is supported
2	No change
<srvdomain> domain setting:	
0	CS_ONLY
1	PS_ONLY
2	CS_PS
3	ANY
4	No change

11.8 Product model ID command +CGMM/+GMM

11.8.1 Command Syntax

Command	Possible response(s)
+CGMM	<model>
+GMM	<model>

11.8.2 Interface Description

This command is used to get product model ID, the function of +CGMM and +GMM are identical. But the command +CGMM can be used when module have not SIM/USIM card . Product mode ID is composed of character string, the max length can not beyond 2048 byte , including the end character '\0' .

11.8.3 Defined Value

At present , the value of model id including :



EM700, EM770W.

EM700 HUAWEI 3G M2M MODULE-WCDMA/EDGE/GPRS/GSM

EM770W HUAWEI 3G M2M MODULE-HSPA/WCDMA/EDGE/GPRS/GSM

12 Data Service Interface Description

12.1 Network registration +CREG

12.1.1 Command Syntax

Command	Possible response(s)
+CREG=[<n>]	<CR><LF>OK<CR><LF>
+CREG?	<CR><LF>+CREG:<n>,<stat>[,<lac>,<ci>]<CR><LF><CR><LF>OK<CR><LF>
+CREG=?	<CR><LF>+CREG: (list of supported <n>s)<CR><LF><CR><LF>OK<CR><LF>

12.1.2 Interface Description

The SET command is used to control “+CREG” to report event proactively.

When <n>=1, and the state of network registration changes, the following will be reported: +CREG:< stat >

When <n>=2, and the cell information changes, the following will be reported: +CREG:<stat>[,<lac>,<ci>]

The READ command returns the current registration state <stat>. The position information <lac> and <ci> is reported only when <n>=2.

12.1.3 Defined Values

<n>:

- 0 Disable proactive reporting of “CREG”
- 1 Enable proactive reporting of “+CREG <stat>”
- 2 Enable proactive reporting of “+CREG: <stat>[,<lac>,<ci>]”..

<stat>:

- 0 Not registered. The MS is not searching the new operators to be registered.

- 1 Local network is registered
- 2 Not registered. But the MS is searching the new operators to be registered.
- 3 Registration rejected
- 4 Unknown reasons
- 5 Roaming network is registered

<lac>: Position code information, composed of four characters and expressed in hexadecimal. (Example: "00C3"= "195" in decimal)

<ci>: Cell information, composed of four characters and expressed in hexadecimal. (Extended Information: according 3GPP Rel7, four characters are requested, but if before Rel7, for example the currently network is Rel6 mostly, only the last two characters is valid, the other characters is invalid and should be ignored. For example, if the <CI> return 3B3DE1C, only DE1C is valid and could be used as DE1C is the last two characters.)

12.2 Network registration +CGREG

12.2.1 Command Syntax

Command	Possible response(s)
+CGREG=[<n>]	<CR><LF>OK<CR><LF>
+CGREG?	<CR><LF>+CREG:<n>,<stat>[,<lac>,<ci>]<CR><LF><CR><LF>OK<CR><LF>
+CGREG=?	<CR><LF>+CREG: (list of supported <n>s)<CR><LF><CR><LF>OK<CR><LF>

12.2.2 Interface Description

The SET command is used to control "+CGREG" to report event proactively.

When <n>=1, and the state of network registration changes, the following will be reported: +CGREG:< stat >

When <n>=2, and the cell information changes, the following will be reported: +CGREG: <stat>[,<lac>,<ci>]

The READ command returns the current registration state <stat>. The position information <lac> and <ci> is reported only when <n>=2.

12.2.3 Defined Values

<n>:

- 0 Disable proactive reporting of "CGREG"
- 1 Enable proactive reporting of "+CGREG <stat>"

2 Enable proactive reporting of "+CGREG: <stat>[,<lac>,<ci>]"..

<stat>:

0 Not registered. The MS is not searching the new operators to be registered.

1 Local network is registered

2 Not registered. But the MS is searching the new operators to be registered.

3 Registration rejected

4 Unknown reasons

5 Roaming network is registered

<lac>: Position code information, composed of four characters and expressed in hexadecimal. (Example: "00C3"= "195" in decimal)

<ci>: Cell information, composed of four characters and expressed in hexadecimal.

Extended Information: according 3GPP Rel7, four characters are requested, but if before Rel7, for example the currently network is Rel6 mostly, only the last two characters is valid, the other characters is invalid and should be ignored. For example, if the <CI> return 3B3DE1C, only DE1C is valid and could be used as DE1C is the last two characters.

12.3 Operator selection +COPS

12.3.1 Command Syntax

Command	Possible response(s)
+COPS=[<mode>[,<format>[,<oper>[,<rat>]]]]	<CR><LF>OK<CR><LF> In case of MS-related error: <CR><LF>+CME ERROR: <err><CR><LF>
+COPS?	<CR><LF>+COPS: <mode>[,<format>,<oper>[,<rat>]]<CR><LF><CR><LF>OK<CR><LF> In case of MS-related error: <CR><LF>+CME ERROR: <err><CR><LF>
+COPS=?	<CR><LF>+COPS: [list of supported (<stat>,long alphanumeric <oper>,short alphanumeric <oper>,numeric <oper>[,<rat>])s],,(list of supported <mode>s),(list of supported <format>s)]<CR><LF>OK<CR><LF> In case of CME error: <CR><LF>+CME ERROR: <err><CR><LF>

12.3.2 Interface Description

This interface enables to query the network state and network selection mode currently registered by the MS. The Execution command enables to select the GSM/UMTS network automatically or manually. The READ command returns the current network selection mode. If the registration is successful, the current operator information will be returned. The TEST command returns the list of (up to 20) operators existent in the current network.

12.3.3 Defined Values

<mode>:

- 0 automatic (<oper> field is ignored)
- 1 manual (<oper> field shall be present, and <AcT> optionally)
- 2 deregister from network (NOT SUPPORT)
- 3 set only <format> (for read command +COPS?), do not attempt

registration/deregistration (<oper> and < AcT> fields are ignored);

this value is not applicable in read command response

- 4 manual/automatic (<oper> field shall be present); if manual selection fails, automatic mode (<mode>=0) is entered

<format>:

- 0 long format alphanumeric <oper>
- 1 short format alphanumeric <oper>
- 2 numeric <oper>

<oper>:

string type; <format> indicates if the format is alphanumeric or numeric; long alphanumeric format can be up to 16 characters long and short format up to 8 characters (refer GSM MoU SE.13); numeric format is the GSM Location Area Identification number (refer TS 24.008 subclause 10.5.1.3) which consists of a three BCD digit country code coded as in ITU-T E.212 Annex A, plus a two BCD digit network code, which is administration specific; returned <oper> shall not be in BCD format, but in IRA characters converted from BCD; hence the number has structure: (country code digit 3) (country code digit 2) (country code digit 1) (network code digit 3) (network code digit 2) (network code digit 1)

<stat>:

- 0 unknown
- 1 available
- 2 current
- 3 forbidden

<rat> access technology selected

- 0 GSM
- 2 UTRAN

12.3.4 Examples of searching network

To query the present status of ME's network registration using the test command:

```
+COPS:(2,"","","46007",2),(3,"China Unicom","UNICOM","46001",0),(3,"China Mobile  
Com","CMCC","46000",0),,(0,1,3,4),(0,1,2)
```

OK

Automatic search of network

```
AT+COPS=0
```

OK

Note: in SET command, that mode equals to 0 makes other parameters invalid.

Manual search of network

```
AT+COPS=1,2,46000 (+CREG=1, +CGREG=1, enable URC reporting)
```

OK

(If the selected operator was not allowed, the ME is now unregistered. The

READ command will return only the mode, but no operator:

```
AT+COPS?
```

```
+COPS: 1
```

Please use the AT+CREG? command to verify the registration status.)

Note: We cannot manually search the UTRAN network when current setting is GSM ONLY(mode=13) mode which set by %SYSCFG.

We cannot manually search the GSM network when current setting is WCDMA ONLY(mode=14) mode which set by %SYSCFG.

ERROR will be returned in this situation.

query the status of the ME's network registration using the read command:

```
AT+COPS? (query the information of the network currently logged in)
```

```
+COPS:1,2,46000 (command returns mode, format, registered operator)
```

OK

13 TCP/UDP Service Interface Description

13.1 Initialize IP service %IPINIT

13.1.1 Command Syntax

Command	Possible response(s)
%IPINIT=<APN>[,<user_name>[,<password>]]	<CR><LF>OK<CR><LF> <CR><LF>ERROR<CR><LF>
%IPINIT?	<CR><LF>%IPINIT:<state>,<ip_address>,<APN>,<pri_dns_address>,<sec_dns_address>,<CR><LF><CR><LF>OK<CR><LF>
%IPINIT=?	<CR><LF>%IPINIT:(list of supported <state>s) <CR><LF><CR><LF>OK<CR><LF>

13.1.2 Description

This command is used to initialize TCP/UDP connection, access ISP or establish GPRS/UMTS network, in order to establish a physical connection. After initialization, module gets a local IP, then to open TCP link or transfer UDP data.

13.1.3 Defined Values

<APN>: string type, (Access Point Name).

<user_name>: string type, user name, can be default

<password>: string type, password, can be default

<state>: initialization sign

0 not initialized

1 initialized

<ip_address >: string type, local IP

< pri_dns_address>: string type,primary DNS IP

< sec_dns_address >: string type,secondary DNS IP

13.2 Open TCP/UDP link %IPOPEN

13.2.1 Command Syntax

Command	Possible response(s)
%IPOPEN=<link_id>,<type>[,<dest_ip>[,<dest_port>[,<local_port>]]]	<CR><LF>OK<CR><LF> <CR><LF>ERROR<CR><LF>
%IPOPEN?	<CR><LF>%IPOPEN:<link_id>,<type>,<local_port>[,<dest_ip>[,<dest_port>]] [<CR><LF>%IPOPEN:<link_id>,<type>,<local_port>[,<dest_ip>[,<dest_port>]] [. . .]]<CR><LF><CR><LF>OK<CR><LF>
%IPOPEN=?	<CR><LF>%IPOPEN:(range of supported <link_id>s), (range of supported <type>),(range of supported <local_port>),(range of supported <dest_ip>),(range of supported <dest_port>) <CR><LF><CR><LF>OK<CR><LF>

13.2.2 Description

This command is used to open one TCP or one UDP link or open one or more TCP/UDP links.

13.2.3 Defined Values

<link_id>: link ID

1~5 the range of link ID .

<type>: string type, link type

“TCP” the link type is set to TCP

“UDP” the link type is set to UDP

<dest_ip>: string type, IP address to be connected

<dest_port>: 16-bit integer type, Port of the IP address to be connected

<local_port>: 16-bit integer type, local port

13.3 Configure TCP/UDP as a server %IPLISTEN

13.3.1 Command Syntax

Command	Possible response(s)
%IPLISTEN=<type>,<listen_port>	<CR><LF>OK<CR><LF> <CR><LF>ERROR<CR><LF>

%IPLISTEN?	<CR><LF>%IPLISTEN:<type>,<listen_port>,<idle_num><CR><LF><CR><LF>OK<CR><LF>
%IPLISTEN=?	<CR><LF>%IPLISTEN:(range of supported <type>),(list of supported <listen_port>),(range of supported <idle_num>)<CR><LF><CR><LF>OK<CR><LF>

13.3.2 Description

This command is used to enable listening function. At most 5 clients are supported

13.3.3 Defined Values

<type>: string type, link type

“TCP” the link type is set to TCP

“UDP” the link type is set to UDP

“NULL” the server is not on, only used in %IPLISTEN? command

<listen_port>: 16-bit integer type, local listening port

<idle_num>: 16-bit integer type, the number of free links

0~5 It just supports 5 links currently.

13.4 Send TCP/UDP data %IPSEND

13.4.1 Command Syntax

Command	Possible response(s)
%IPSEND=<link_id>,<data>	<CR><LF>%IPSEND:<link_id><CR><LF><CR><LF>OK<CR><LF>
	ERROR
%IPSEND=?	OK

13.4.2 Description

This command is used to send data on the TCP or UDP connection that has been established already.

13.4.3 Defined Values

<link_id>: link ID

1~5 the range of link ID.

<data>: user data, supporting GSM7 and UCS2 coding. The maximum length of the user data is 512 bytes.

13.5 Data buffer query command %IPGETDATA

13.5.1 Command Syntax

Command	Possible response(s)
%IPGETDATA=<index>	<CR><LF>%IPGETDATA: <index>,<link_id>,<data_len><CR><LF><data><CR><LF><CR><LF>OK<CR><LF>
%IPGETDATA?	<CR><LF>%IPGETDATA: <index>,<link_id>,<data_len > <CR><LF><CR><LF>OK<CR><LF>
%IPGETDATA=?	<CR><LF>%IPGETDATA:(0-2) <CR><LF><CR><LF>OK<CR><LF>

13.5.2 Description

This command is used to query data buffer for users. The newest three packages are buffered, it is convenience for users to query.

13.5.3 Defined Values

<index >: cache data index

0~2 the range of cache data index

<link_id>: link ID

1~5 the range of link ID.

<data_len>: 16-bit integer type, data length

<data>: user data

13.6 Arrival data notification %IPDATA

13.6.1 Command Syntax

Command	Possible response(s)
	<CR><LF>%IPDATA:<link_id>,<data_len>,<data ><CR><LF><CR><LF>OK<CR><LF>

13.6.2 Description

This command is used to notify the user network of the arrival of valid data.

13.6.3 Defined Values

<link_id>: link ID

1~5 the range of link ID

<data_len>: 16-bit integer type, data length

<data>: new arrival data information

13.7 Close TCP/UDP link %IPCLOSE

13.7.1 Command Syntax

Command	Possible response(s)
%IPCLOSE=[<link_id>]	<CR><LF>OK<CR><LF>
%IPCLOSE?	<CR><LF>%IPCLOSE:<link1_state>,<link2_state>,<link3_state>,<link4_state>,<link5_state><CR><LF><CR><LF>OK<CR><LF>
%IPCLOSE=?	<CR><LF>%IPCLOSE:(range of <link_id>)<CR><LF><CR><LF>OK<CR><LF>

13.7.2 Description

This command is used to close a TCP/UDP link or exit TCP/UDP function.

Link ID 1~5 means closing real link. TCP link needs to finish 4 times handshakes to other side. UDP only needs to deactivate the local link.

Input 6 for closing listening function of server and the links of server.

Input 7 for unsubscribing from network, the same as deactivating the network while dialing.

If all parameters are default, means closing link 1, equally AT%IPCLOSE=1.

13.7.3 Defined Values

<link_id>: link ID

- 1~7 the range of link ID
- 1~5 close existing link
- 6 close the server and it's links
- 7 close all links and ppp

<linkx_state>: the state of link x

- 0 the link is close and can be used.
- 1 the link is open and used.

13.8 Enable transparent transfer mode %IPENTRANS

13.8.1 Command Syntax

Command	Possible response(s)
%IPENTRANS	<CR><LF>OK<CR><LF>">"

13.8.2 Description

This command is used to enable TCP/UDP transparent transfer mode. In this mode the user data is transferred to remote terminal through TCP/UDP link without length limit.

After ">" prompt, user can input sending data continuously, Ctrl-Z is used as a send symbol, then wait for another.

At the same time of sending data ,the terminal data will appear after "<" prompt to tell apart.

After ">" prompt, Ctrl-Q is used as a quit symbol, firstly send all the remained data, then disable TCP/UDP transparent transfer mode.

13.9 Register voice phone number %IPHOSTPN

13.9.1 Command Syntax

Command	Possible response (s)
%IPHOSTPN=<number1> [,< number2>[,<number3>]]	OK ERROR
% IPHOSTPN?	<CR><LF>%IPINIT:<number1>[,<number2>[,<number3>]]<CR><LF><CR><LF>OK<CR><LF>

13.9.2 Description

This command is used to register ipstack startup voice number and write the number to the profile.

Use "%IPHOSTPN = ,," to clear the register number.

13.9.3 Defined Values

<number1> : strings type, the first register voice phone number

<number2> : strings type, the second register voice phone number

<number3> : strings type, the third register voice phone number

13.10 Set autoconnecting parameter %IPCFL

13.10.1 Command Syntax

Command	Possible response(s)
%IPCFL=<index>,[<value>]	<CR><LF>OK<CR><LF>
%IPCFL?	<CR><LF>%IPCFL:<retrycount>,<backoffduration>,<connectioncheckmethod>,<connectioncheckperiod>,<TCPmode>,<senddelaytime>,<MTUnumber>,<inactivitytime>,<retrytimerafterTCPfail>,<PPPinactiveTime><CR><LF><CR><LF>OK<CR><LF>
%IPCFL=?	<CR><LF>%IPCFL: <CR><LF>[0] Retry Count (range of supported <retrycount >s) <CR><LF>[1] Backoff Duration (range of supported <backoffduration>s) <CR><LF>[2] Connection Check Method (range of supported <connectioncheckmethod>s) <CR><LF>[3] Connection Check Period (range of supported <connectioncheckperiod>s) <CR><LF>[4] TCP Mode (range of supported <TCPmode>s) <CR><LF>[5] Send Delay Time (range of supported <senddelaytime>s) <CR><LF>[6] MTU (range of supported <MTUnumber>s) <CR><LF>[7] Inactivity Time (range of supported <inactivitytime>s) <CR><LF>[8] Retry Timer after TCP fail (range of supported <retrytimerafterTCPfail>s) <CR><LF>[9] PPP Inactive Time (range of supported <PPPinactiveTime>s) <CR><LF><CR><LF>OK<CR><LF>

13.10.2 Description

This command is used to set autoconnect parameter and write the parameter to the profile.

13.10.3 Defined Values

<index>: parameter index

0~9: the range of parameter index

<value>: value of parameter index

<retrycount>: This parameter is valid only in client mode.

0~10 : The times of reconnection to server after connecting failed in 10 seconds. The default value is 0.

<backoff duration>:

0~60 (min) : Interval of PPP autoconecion.The default value is 0.

< Connection Check Method >: The default value is 1.

0 : Disable keepalive timer

1 : Enable keepalive timer

< Connection Check Period > : The default value is 30.

10~36000 (s) : Interval of PPP autoconnecting

< TCP Mode > : TCP link mode,The default value is 0.

0 : server mode

1 : client mode

2

< Send Delay Time >: The default value is 10

10~36000 (0.1s) : Delay time of sending data

< MTU >: The default value is 100 bytes

0~1500 : Maximum length of data packet.

< Inactivity Time >: The default value is 60 minutes

0~120 : maximum Inactivity time after connected.

< Retry Timer after TCP fail >: The default value is 3 minutes.

0~30: Maximum interval of reconnecting after disconnecting for net condition or any other reasons.

Note: The parameter is no use now.

< PPP Inactive Time >: The default value is 60 minutes.

0~1440: Period Stack will wait before disconnecting PPP connection if there is no activity for this set period of time.

13.11 Start autoconnecting %IPAUTOCON

13.11.1 Command Syntax

Command	Possible response(s)
%IPAUTOCON	<CR><LF>OK<CR><LF>

13.11.2 Description

When the first parameter of %IPCFL is 0, the autoconnection after reset is disable.

In this case, we can use this command to start autoconnect.

Note: the parameter of %IPCGDCONT, %IPCTRIIP must be set.

13.12 PDP environment setting command %IPCGDCONT

13.12.1 Command Syntax

Command	Possible response(s)
%IPCGDCONT=<cid>[,<PDP_type>[,<APN>[,<PDP_addr>[,<d_comp>[,<h_comp>]]]]]	<CR><LF>OK<CR><LF>
%IPCGDCONT?	<CR><LF>%IPCGDCONT: <cid>, <PDP_type>, <APN>, <PDP_addr>, <d_comp>, <h_comp>[<CR><LF>%IPCGDCONT: <cid>, <PDP_type>, <APN>, <PDP_addr>, <d_comp>, <h_comp>[...]]<CR><LF><CR><LF>OK<CR><LF>
%IPCGDCONT=?	<CR><LF>%IPCGDCONT: (range of supported <cid>s), <PDP_type>,,(list of supported <d_comp>s),(list of supported <h_comp>s) [<CR><LF>%IPCGDCONT: (range of supported <cid>s), <PDP_type>,,(list of supported <d_comp>s), (list of supported <h_comp>s)[...]]<CR><LF><CR><LF>OK<CR><LF>

13.12.2 Description

A group of setting environments indexed by <cid> are stored locally. Each stored setting environment contains a group of parameters related to PDP. The SET command stores a group of PDP-related parameters to the setting environment indexed by <cid>. Initially, each setting environment is not defined. After a group of parameters are stored via the SET command, the setting environment enters the "defined" state. The number of defined setting environments that can be stored depends on the value range of <cid>.

A special SET command “%IPCGDCONT= <cid>” will clear all parameters in the setting environment indicated by <cid>.

The READ command returns all the parameter values of the defined setting environments. The setting environments are displayed by means of linefeed.

The TEST command returns all supported values. In the response, they are displayed one by one by using “PDP_type” values supported by MS as index. Each entry takes a determined PDP_type value, and includes the supported value ranges of other parameters under the value of PDP_type. The entries are displayed by means of linefeed.

13.12.3 Defined Values

<cid>:

1-16: Index value of PDP setting environment. Other PDP-related commands can be used for invoking the storage position through this index value.

<PDP_type>:

String value. It indicates the type of the packet switching protocol.

“IP”: IP protocol

“PPP”: End-to-end protocol

“IPV6”: IP protocol Version 6

<APN>:

String value. It indicates the access point domain name of the connected GGSN or external network.

<PDP_addr>:

String value. It indicates the address of MSI.

<d_comp>:

A numerical value, controlling the compression of PDP data.

0 No compression.

1 Manufacturer preferred compression.

2 V.42BIS data compression

If no <d_comp> is included, it is equivalent to the effect that the <d_comp> is 0.

<h_comp>:

A numerical value, controlling the compression of PDP header.

0 No compression.

1 Manufacturer preferred compression.

2 PDP header compression based on rfc 1144

If no <h_comp> is included, it is equivalent to the effect that the <h_comp> is 0.

13.12.4 Informative Examples

After executing the following commands consecutively, the results are as follows:

Command 1: AT%IPCGDCONT=?

Result 1:

%IPCGDCONT:(1-16),"IP",,,(0-1),(0-1)

%IPCGDCONT:(1-16),"PPP",,,(0-1),(0-1)

OK

Note: This command supports two kinds of packet switching protocols: "IP" and "PPP". The TEST command lists the values of other parameters supportable by each protocol.

Command 2: AT%IPCGDCONT?

Result 2:

%IPCGDCONT:1,"IP","vcol.com",,,0,0

OK

Note: The MS stores 1 PDP setting environment currently. The <cid> of this setting environment is 1.

Command 3: AT%IPCGDCONT=16,"PPP","abc.com","10.111.145.233",1,1

Result 3:

OK

Note: This command stores 1 new BDP setting environment in the MS. The <cid> is 16.

Command 4: AT%IPCGDCONT?

Result 4: %IPCGDCONT:1,"IP","vcol.com",,,0,0

%IPCGDCONT:16,"PPP","abc.com","10.111.145.233",1,1

OK

Note: Now the MS has an additional PDP setting environment whose <cid> is 16.

Command 5: AT%IPCGDCONT=16

Result 5:

OK

Note: Clear the PDP setting environment whose <cid>=16

Command 6: AT%IPCGDCONT?

Result 6:

%IPCGDCONT:1,"IP","vcol.com","",0,0

OK

Note: The PDP setting environment whose <cid>=16 in the MS has been cleared.

13.13 Set IP configuration parameter %IPCTRIP

13.13.1 Command Syntax

Command	Possible response(s)
%IPCTRIP=<link_id>,<type>[,<dest_ip>,<dest_port>[,<local_port>]]	OK ERROR
%IPCTRIP?	<CR><LF>%IPOPEN:<link_id>,<type>,<local_port>[,<dest_ip>[,<dest_port>]] [<CR><LF>%IPOPEN:<link_id>,<type>,<local_port>[,<dest_ip>[,<dest_port>]] [...]<CR><LF><CR><LF>OK<CR><LF>
%IPCTRIP=?	<CR><LF>%IPOPEN:(range of supported <link_id>s), (range of supported <type>),(range of supported <local_port>),(range of supported <dest_ip>),(range of supported <dest_port>) <CR><LF><CR><LF>OK<CR><LF>

13.13.2 Description

This command is used to set automatic connect IP information. When set client autoconnecting, the link_id can not be 0, the dest_ip can not be "0.0.0.0" and the dest_port can not be 0. When set server autolisting, the link_id must be 0, the dest_ip must be "0.0.0.0" and the dest_port must be 0.

Use "%IPCTRIP=link_id" to clear the automatic connect IP information.

13.13.3 Defined Values

<link_id>: link ID

0 the link ID for setting server autolisting.

1~5 the range of link ID for setting client autoconnecting.

<type>: string type, link type

- “TCP” the link type is set to TCP
- “UDP” the link type is set to UDP
- <dest_ip>: string type, IP address to be connected
- <dest_port>: 16-bit integer type, Port of the IP address to be connected
- <local_port>: 16-bit integer type, local port

13.14 PDP authorization setting command %IPQCPDPP

13.14.1 Command Syntax

Command	Possible response(s)
%IPQCPDPP=<cid>[,<PDP_AUTH_type>[,<password>[,<username>]]]	<CR><LF>OK<CR><LF>
%IPQCPDPP?	<CR><LF>%IPQCPDPP: <cid>, <PDP_AUTH_type>, [<username>] [<CR><LF>%IPQCPDPP: <cid>, <PDP_AUTH_type>, [<username>] [...]]<CR><LF><CR><LF>OK<CR><LF>
%IPQCPDPP=?	<CR><LF>%IPQCPDPP: (range of supported <cid>s),(range of supported <PDP_AUTH_type>s),,<CR><LF><CR><LF>OK<CR><LF>

13.14.2 Description

A group of setting authorization indexed by <cid> are stored locally. Each stored setting authorization contains a group of parameters related to PDP. The SET command stores a group of PDP-related parameters to the setting authorization indexed by <cid>. Initially, each setting environment is not defined. After a group of parameters are stored via the SET command, the setting authorization enters the “defined” state. The number of defined setting authorization that can be stored depends on the value range of <cid>.

A special SET command “%IPQCPDPP= <cid>” will clear all parameters in the setting authorization indicated by <cid>.

The READ command returns all the parameter values of the defined setting authorization. The setting authorization are displayed by means of linefeed.

13.14.3 Defined Values

<cid>:

1-16: Index value of PDP setting environment. Other PDP-related commands can be used for invoking the storage position through this index value.

<PDP_AUTH_type>: Authorization type(0-2)

- 0 None
- 1 PAP
- 2 CHAP In the mode only password is needed
e.g. : AT%IPCGDCONT=1,2,PASSWORD

<password>: String for authorization password

<username>: String for authorization username

13.14.4 Informative Examples

After executing the following commands consecutively, the results are as follows:

Command 1: AT%IPQCPDPP=?

Result 1:

%IPQCPDPP:(1-16),(0-2),,

OK

Command 2: AT%IPQCPDPP?

Result 2:

%IPQCPDPP: 1,0

%IPQCPDPP: 2,0

%IPQCPDPP: 3,0

%IPQCPDPP: 4,0

%IPQCPDPP: 5,0

%IPQCPDPP: 6,0

%IPQCPDPP: 7,0

%IPQCPDPP: 8,0

%IPQCPDPP: 9,0

%IPQCPDPP: 10,0

%IPQCPDPP: 11,0

%IPQCPDPP: 12,0

%IPQCPDPP: 13,0

%IPQCPDPP: 14,0

%IPQCPDPP: 15,0

%IPQCPDPP: 16,0

OK

Command 3: AT%IPQCPDPP=1,1,"123456","abc"

Result 3:

OK

Command 4: AT%IPQCPDPP?

Result 4:

%IPQCPDPP: 1,1,"abc"

%IPQCPDPP: 2,0

.....

%IPQCPDPP: 16,0

OK

13.15 Enable or disable IP notification %IPNOTIF

13.15.1 Command Syntax

Command	Possible response(s)
%IPNOTIF=<flag>	<CR><LF>OK<CR><LF>
% IPNOTIF?	<CR><LF>% IPNOTIF:<flag><CR><LF>
% IPNOTIF=?	<CR><LF>% IPNOTIF:(range of < flag >) <CR><LF><CR><LF>OK<CR><LF>

13.15.2 Description

This command is used to enable or disable all IPSTack Terminal notification, by default the notification is on, and the user can turn it off.

The value is written to profile.

13.15.3 Defined Values

< flag >: printing flag

0 disable

1 enable

14 STK Service Interface Description

14.1 STK Set Facilities %STSF

14.1.1 Command Syntax

Command	Possible response(s)
%STSF=<mode>	OK +CME ERROR:<err>
%STSF?	<CR><LF>%STSF:<Mode><CR><LF><CR><LF>OK<CR><LF>
%STSF=?	<CR><LF>%STSF:(list of supported <mode>s) <CR><LF><CR><LF>OK<CR><LF>

14.1.2 Description

This command is used to set STK functionality: enable and disable STK functionality.

14.1.3 Defined Values

<mode>: the mode of STK functionality

- 0 disable the functionality(default)
- 1 enable the functionality

14.2 STK Indication %STIN

14.2.1 Command Syntax

Command	Possible response(s)
	%STIN: <CmdType>,<CmdIndex>,<isTimeOut>

14.2.2 Description

This command is an unsolicited report command. Used to inform user the STK card information, then user can get the information via %STGI command.

14.2.3 Defined Values

<CmdType>: command type.

- 0 STK card has already sent a 'Setup Menu' command
- 1 STK card has already sent a 'Display Text' command
- 2 STK card has already sent a 'Get Inkey' command
- 3 STK card has already sent a 'Get Input' command
- 4 STK card has already sent a 'Setup Call' command
- 5 STK card has already sent a 'Play Tone' command
- 6 STK card has already sent a 'Sel Item' command
- 7 STK card has already sent a 'Refresh' command
- 8 STK card has already sent a 'Send SS' command
- 9 STK card has already sent a 'Send SMS' command
- 10 STK card has already sent a 'Send USSD' command
- 11 STK card has already sent a 'LAUNCH BROWSER' command
- 12 STK card has already sent a 'SET UP IDLE MODE TEXT' command
- 99 STK card has already sent a 'End Session' command

<CmdIndex>: (0-12) the index of command type

<isTimeout>: Whether the command is timeout or not

14.3 STK Get Information %STGI

14.3.1 Command Syntax

Command	Possible response(s)
%STGI=<CmdType>,<Cmd Index>	Refer to Table1 +CME ERROR: <err>
%STGI?	%STGI:0,0 [...] +CME ERROR: <err>
%STGI=?	%STGI: (0-12,99) OK

Table1

index	Command Type	Possible response(s)
0	Setup Menu	%STGI: <Id>, <NbItems>, <Alpha Identifier menu> %STGI :<Id1>,<NbItems>,<Alpha Id1 Label>,<Help Info> [,<NextActionId>]<CR><LF> %STGI: <Id2>, <NbItems>, <Alpha Id2 Label>, <Help Info>[,<NextActionId>]<CR><LF>[...]
1	Display Text	%STGI:<TextInfo>,<TextFormat>,<ClearMode>[,<DurationTime>]
2	Get Inkey	%STGI: <TextInfo>,<textCode>,<rspFormat>,<HelpInfo>[,<Timeout>[,Icon]]
3	Get Input	%STGI: <TextInfo>,<textCode>,<rspFormat>,<PackMode>,<EchoMode>,<SizeMin>,<SizeMax>,<HelpInfo> [,<DefaultTextInfo>,<textCode >]
5	PLAY TONE	%STGI:<ToneType>[,< Duration >,<TextInfo>,<textCode >, <icon>]
6	Sel Item	%STGI: <DefaultItem>, <NbItems>, <Alpha Identifier menu><CR><LF> %STGI: <Id1>, <NbItems>, <Alpha Id1 Label>, <Help Info>[,<NextActionId>]<CR><LF> %STGI: <Id2>, <NbItems>, <Alpha Id2 Label>, <Help Info>[,<NextActionId>]<CR><LF> [...]
7	Refresh	%STGI:<Refresh Type>[,<File List>]
11	LAUNCH BROWSER	%STGI:< URL >,<LaunchMode>
12	SET UP IDLE MODE TEXT	%STGI:<TextInfo>,<textCode>[,<icon>]

14.3.2 Description

After user knowing about the information of STK card via %STIN, can send module this command to get the detail data of STK card.

The query command used to get the command type and index of %STIN

The test command used to get the support list of STK card.

14.3.3 Defined Values

<CmdType>: command type.

- 0 STK card has already sent a 'Setup Menu' command
- 1 STK card has already sent a 'Display Text' command

- 2 STK card has already sent a 'Get Inkey' command
- 3 STK card has already sent a 'Get Input' command
- 4 STK card has already sent a 'Setup Call' command
- 5 STK card has already sent a 'Play Tone' command
- 6 STK card has already sent a 'Set Item' command
- 7 STK card has already sent a 'Refresh' command
- 8 STK card has already sent a 'Send SS' command
- 9 STK card has already sent a 'Send SMS' command
- 10 STK card has already sent a 'Send USSD' command
- 11 STK card has already sent a 'LAUNCH BROWSER' command
- 12 STK card has already sent a 'SET UP IDLE MODE TEXT' command
- 99 STK card has already sent a 'End Session' command

<CmdIndex>: (0-12) the index of command type

14.3.4 Example

```
%STIN:0,0          inform the Main Menu of STK card
AT%STGI=0,0        user get the Main Menu
%STGI:"SIM TOOLKIT MAIN MENU"
%STGI:1,3,"BANK",0
%STGI:2,3,"QUIZ",0
%STGI:3,3,"WEATHER",0
OK
```

14.4 STK Give Response %STGR

14.4.1 Command Syntax

Command	Possible response(s)
%STGR=<CmdType>,<CmdIndex> [,<Result>,<Data>]	OK +CME ERROR: <err>
%STGR?	%STGR:0,0 [...] +CME ERROR: <err>
%STGR=?	%STGR: (0-12,99),(0-8) OK

14.4.2 Description

This command used to inform the STK card of the result of AT command originated by user.

The query command used to get the type and index of command which is waiting for user reply.

The test command used to get the type and index of all the supported command.

14.4.3 Defined Values

<CmdType>: command type.

- 0 Main Menu operation
- 1 Response of 'Display Text' command
- 2 Response of 'Get Inkey' command
- 3 Response of 'Get Input' command
- 5 Response of 'Play Tone' command
- 6 Response of 'Set Item' command
- 10 STK card has already sent a 'Send USSD' command
- 11 Response of 'LAUNCH BROWSER' command
- 12 Response of 'SET UP IDLE MODE TEXT' command
- 99 Exit

<CmdIndex>: (0-12) the index of command type

15 Remote SMS Interface Description

Make sure the settings of <mode> and <mt> fields of +CNMI command are 1 and 4. The value is the default value, please don't change them if you want to use the remote SMS functionality. In order to confirm it, can use AT command like follow:

```
At+CNMI?  
+CNMI: 1,4,0,0,0
```

15.1 Query current status of module **Module.all**

15.1.1 Remote SMS Syntax

SMS content	Possible response(s)
Module.all	Now in WCDMA mode. RSCP:<rscp>,ECIO:<ecio>,CELL_ID:<cell_id>,PSC code:<psc_code>,Frequency:<current_band_freq>
	Now in GSM mode. CELL_ID:<cell_id>, Frequency:<current_band_freq>

15.1.2 Description

This remote SMS is used to query the current status of module.

15.1.3 Defined Values

<rscp>: 0~65535, used to indicate the GSM/WCDMA RSSI value.

<ecio>: 0~65535, used to indicate the WCDMA ecio value. Only valide for WCDMA mode.

<cell_id>: uint32 format, used to indicate the current service cell.

<psc_code>: used to indicate the primary scrambling code of current service cell.

< current_band_freq >: current frequency of the bands.

15.2 Query IP status of module **Module.ipstack**

15.2.1 Remote SMS Syntax

SMS content	Possible response(s)
Module.ipstack	TIPS SOCK OFF
	TIPS SOCK CONNECTING,%Local_IP:<local_ip>,%Server_IP: <server_ip>
	TIPS SOCK LISTENING,%Local_IP: <local_ip>
	TIPS SOCK CONNECTING,%Local_IP:<local_ip>,%Client_IP:<client_ip>

15.2.2 Description

This remote SMS is used to query the current status of embedded IP operation process. The difference of the response please refer to the IP stack document.

15.2.3 Defined Values

<local_ip>: The IP address of local module.

<server_ip>: The IP address of remote server.

<client_ip>: The IP address of remote client while the aim module is server.

15.3 Remote reset module **Module.reset**

15.3.1 Remote SMS Syntax

SMS content	Possible response(s)
Module.reset	

15.3.2 Description

Module will reset without replying anything after receiving this remote SMS.

16 Overall Design Constraints

16.1 Standards Compliance

AT command standards. For details, see the protocols 27.007, 27.005 and V0025-TE.

16.2 Hardware Limitations

16.3 Technology Limitations

17 Software Quality Attributes

None

18 Dependencies

Dependent on the stability of Qualcomm codes.

19 Feasibility Analysis

None

20 Issues To Be Determined

None

21

Appendixes

21.1 Appendix 1 AT Command Description

21.1.1 Basic Commands

The format of a basic command is:

<command>[<number>]

Where, <command> is a single letter (A-Z) or a "&" plus a single letter, and <number> is a decimal number composed of one or more digits. The 0s at the head of <number> will be ignored. If a basic command that can carry <number> carries no <number>, the <number> value is 0 by default. If a basic command that cannot carry <number> carries a <number>, the information "TOO MANY PARAMETERS" will be returned.

21.1.2 S Register Command

All commands that begin with "S" are collectively called "S register command".
Command format:

S<parameter number>?

S<parameter number>=<value>

The S register command name is composed of the letter "S" combined with a decimal number. This decimal number is called "register sequence number (parameter number)". If the register is not identified, it indicates that this command does not exist, and the "COMMAND NOT SUPPORT" information will be returned. Each S register saves a character. If the command name is followed by "?", it indicates a READ recommend. The ASCII code values currently saved in this S register expressed by a 3-digit decimal number, will be returned. Make up three digits by filling 0s at the end if there are less than 3 digits. If the command name is followed by "=", the command is a SET command. In this case, replace the characters stored in this S register with the characters corresponding to the <value>.

21.1.3 Extended Commands and Manufacturer Defined Commands

The extended commands begin with "+". The commands defined by the manufacturer also begin with a special character, e.g. "\$", "%". For purpose of this document, all

commands defined by manufacturers begin with “%”. All extended commands and manufacturer-defined commands are divided into two categories: Action command and parameter command.

Action commands

Action commands are the commands that carry out a specific action rather than only dealing with local parameters of the MS, e.g. AT+CCFC, AT+CMGS. An action command may carry parameters or not. Action commands include EXECUTION and TEST.

- EXECUTION command

Command format:

No parameter <name>

With 1 parameter <name>[=<value>]

With more parameters <name>[=<compound_value>]

<compound_value> indicates multiple parameters, separated by “,” in the middle. For the parameters that have a default value, they can be omitted and substitute the default value. If all the parameters are omitted, the “=” behind <name> should be omitted too. If <name> is not identified, it indicates that this command does not exist, and the information “COMMAND NOT SUPPORT” will be returned. If <name> is identifiable, and the command contains uncalled-for parameters, or the number of parameters goes beyond the defined range, the information “TOO MANY PARAMETERS” will be returned.

- TEST command

Command format:

<name>=?

If the MS cannot identify <name>, the information “COMMAND NOT SUPPORT” will be given. If the MS can identify <name>, and the command carries no parameter, the information “OK” will be returned. If the command carries parameters, the value range of each parameter will be returned first, then “OK” will be returned.

Parameter commands

Parameter commands refer to the commands that can only deal with the local parameters of MS. These parameters may affect the execution of the action commands. Parameter commands include SET, READ and TEST commands.

- SET command

Command format:

With 1 parameter: <name>[=<value>]

With more parameters <name>[=<compound_value>]

The SET command is used to set the parameters. <compound_value> means multiple parameters, separated by “,” in the middle. For the parameters that have a default value, they can be omitted and substitute the default value. If all the parameters are omitted, the “=” behind <name> should be omitted too. If <name> is not identified, it

indicates that this command does not exist, and the “COMMAND NOT SUPPORT” information will be returned. If <name> is identifiable, and the command contains uncalled-for parameters, or the number of parameters goes beyond the defined range, the information “TOO MANY PARAMETERS” will be returned.

- READ command

Command format:

<name>?

The READ command is used to read the current value of the parameter.

- TEST command

Command format:

<name>=?

If the MS cannot identify <name>, the information “COMMAND NOT SUPPORT” will be given. If the MS can identify <name>, and the command carries no parameter, the information “ok” will be returned. If the command carries parameters, the value range of each parameter will be returned first, then “OK” will be returned.

21.1.4 Abort Attribute:

Abort means the TE sends an instruction to interrupt a command being executed. The “Abort” command must be issued before the command finishes execution, so it makes sense only to the commands that require a certain time period for executing. However, not all commands that require a certain time period for executing can be aborted, depending on the abort attribute of the command. Each AT command has the abort attribute. This attribute is a two-option choice. Namely, the command either supports abort or does not support abort. The commands that support abort include some basic commands and the EXECUTION command of action command. These commands do not accept any abort request within 125ms after being issued. After the command has been issued for 125ms but has not finish execution, if any character is received from the TE, it will interrupt the execution of the command immediately.

The commands that support abort are as follows:

atD	Can be aborted
atA	Can be aborted
at+CLCK	Can be aborted
at+COPS	Can be aborted except “at+COPS=?”
at+CLCC	Can be aborted
at+CLIP	Can be aborted

21.2 Appendix 2 CME Error List

Note: The following table lists the possible CME errors and reasons for all the interface command. The code in the first row of the table represents the <err> value of CME ERROR. The numerals in the table represent the sequence number of reasons. The table of correspondence between CME ERROR and text string is attached later, together with detailed description on the reasons.

For example: “7” is filled in the column whose <err> is 16 in the “+CPWD=” command. This indicates the “+CPWD=” may incur the CME ERROR whose <err> is 16. Its text string is “incorrect password”. The reason is that the sequence number is 7, and the detailed reason is “password incorrect”.

	0	3	4	5	10	12	13	14	16	17	18	20	21	22	23	24
+CPWD=									7							
+CPIN=		3				5										
+CPIN?					4		6	1								
+CFUN=			2													
+CCWA=									7							
+CCFC=									7							
+CUSD=									7							
+CIMI=		40					6									
+CGSN															8	
+COPS=	27 31													32		
+CHLD=															30	
+CSCA=								1								
+CSCA?								1						41		
%DTMF=															30	
%CPBS=				9	4			1								
%CPBR=				9	4		6	1					10	11		
%CPBW=				9	4		6	1				13	10			14

%SPN=								1										
-------	--	--	--	--	--	--	--	---	--	--	--	--	--	--	--	--	--	--

	26	27	30	31	32	100	134	257	258	259	260	261	262	263	264	
+CLCK=															25	
+CCWA=				17			18	19	20	21	22	23	24	25	26	
+CCFC=				17			18	19	20	21	22	23	24	25	26	
+CUSD=				17			18	19	20	21	22	23	24	25	26	
+COPS=			27													
%DTMF=		16														
%CPBR=						12										
%CPBW=	15	16				12										
%SPN						12										

	65280	65281	65282	65283	65284	65285	65286	65287
+CHLD=	33		34,35	37				
%DTMF=	33	38	34					
%SPN=					28	29	30	39

The reasons are described as follows:

- 1 SIM card busy
- 2 Operation not supported
- 3 Check performed without the check request
- 4 No SIM card
- 5 PUK check request existent
- 6 SIM card failure

- 7 Password error
- 8 Failure in obtaining IMEI from NV or invalid IMEI
- 9 Requiring PH-SIM PIN code
- 10 Index number not correct
- 11 Corresponding phonebook storage entry not found
- 12 Unknown error
- 13 Phonebook storage is full
- 14 Too long text string
- 15 Too long number
- 16 Invalid characters included in the number
- 17 Network timeout
- 18 Temporary disorder of service options
- 19 Rejected by network
- 20 Retry operations caused by system error or operation busy
- 21 Call deviated to the incorrect number
- 22 Call deviated to the user's own number
- 23 User unidentifiable
- 24 Service resources nonexistent
- 25 Unknown service type
- 26 Unknown network message
- 27 CM has no buffer to send command request
- 28 Incorrect SPN file contents in SIM card
- 29 Access to SPN file is rejected
- 30 SPN file nonexistent
- 31 MCC/MNC fails to construct PLMN
- 32 Long name/short name of the operator is not found
- 33 Call corresponding to CALL_X is not existent
- 34 Operation mode is not in the online state
- 35 Service state is not a service valid state.
- 36 The state of call_x corresponding to the call forwarding command (CF) is not "income".
- 37 The parameter of supplementary service is NULL (commands 1x, 2x)
- 38 Corresponding call is not in an activated state.
- 39 Another SPN query operation is underway

- 40 Operation not allowed
- 41 SCA file does not exist in SIM card

The correspondence between <err> value of CME ERROR and the text string is as follows:

- 0 phone failure
- 3 operation not allowed
- 4 operation not supported
- 10 SIM not inserted
- 11 SIM PIN required
- 12 SIM PUK required
- 13 SIM failure
- 14 SIM busy
- 15 SIM wrong
- 16 incorrect password
- 17 SIM PIN2 required
- 18 SIM PUK2 required
- 20 memory full
- 21 invalid index
- 22 not found
- 23 memory failure
- 24 text string too long
- 26 dial string too long
- 27 invalid characters in dial string
- 30 no network service
- 31 network timeout
- 32 network not allowed - emergency calls only
- 100 unknown
- 134 service option temporarily out of order (#34)
- 257 network rejected request
- 258 retry operation
- 259 invalid deflected to number
- 260 deflected to own number
- 261 unknown subscriber

- 262 service not in use
- 263 unknown class
- 264 unknown network message
- 65280 call index error
- 65281 call state error
- 65282 sys state error
- 65283 parameters error
- 65284 spn file wrong
- 65285 spn file accessed denied
- 65286 spn file not exist
- 65287 another SPN query operation still not finished

21.3 Appendix 3 CMS Error List

The following table presents all <err> values of CMS Errors that may be returned by the AT command of SMS.

	0	12	30	30	30	31	31	31	31	32	32	32	33	33	33	34	50
	...	8	1	2	4	0	1	2	6	0	1	2	0	1	2	0	0
	12	...															
	7	25	5														
+CNMI			3			6				10							17
+CMG D			3			6	7	8	9	10	11						
+CNMA					5												16
+CPMS			3			6	7	8	9	10							
+CSCA						6	7	8	9				13				
+CMG S	1	2	3		5	6	7	8	9				13	14	15		
+CMG W			3		5	6	7	8	9	10		12					
+CMGL			3			6	7	8	9	10							
+CMG R			3			6	7	8	9	10	11						

Note:

- 1 RP layer error
- 2 TP layer error

- 3 Some other applications leave SMS interface reserved
- 4 Operation not supported.
- 5 In the PDU mode, the PDU parameter is incorrect (actual data length of PDU packet is inconsistent with the given <length>; or PDU format error is detected)
- 6 SIM card not inserted
- 7 PIN request of SIM card
- 8 PH-(U)SIM PIN request of SIM card
- 9 PUK request of SIM card
- 10 Memory error (communication with database of SMS is faulty)
- 11 Invalid memory index number <index>
- 12 Memory is full
- 13 SMSC error (message contains no SCA, or the SCA set via the CSCA command is unavailable)
- 14 No network service is available
- 15 Network timeout
- 16 No status of new SM,error execute this command
- 17 Unbeknown error

21.4 Appendix 4 Summary of Final Result Codes

Final result code	Code	Description
OK	0	It indicates a command line is executed correctly.
CONNECT	1	Connection established
RING	2	Incoming call
NO CARRIER	3	Connection terminated
ERROR	4	Ordinary error
NO DIALTONE	6	No dialling tone
BUSY	7	Opposite party busy
NO ANSWER	8	Connection completion timeout, no answer
+CME ERROR: <err>		Error type is specified by the parameter <err>
+CMS ERROR: <err>		SMS-related error

Final result code	Code	Description
COMMAND NOT SUPPORT	Numbering mode is not supported	Issued command is not supported
TOO MANY PARAMETERS	Numbering mode is not supported	Too many parameters in the issued command

21.5 Appendix 6 List of Initial Values of Command Parameter After MS Restart

The following table presents the initial values of interface parameters mentioned herein at the time of MS startup.

	Description of initial value
E	<value> is 0
V	<value> is 1
S3	<value> is 013
S4	<value> is 010
S5	<value> is 008
+CPMS	<mem1>, <mem2> and <mem3> are "ME"
+CMEE	<value> is 2
+CGDCONT	Obtained from NV after restart
+CCWA	<n> is 0
+CUSD	<n> is 0
+CSCA	<sca> and <tosca> are empty. It is necessary to read the SMSC number in the SIM card to the MS via "+CSCA?" command
+CSMS	<service> is 0
+CMGF	<mode> is 0
+CNMI	<mode>,<mt>,<bm>,<ds> and <bfr> are 0
+COPS	<mode> is 0, <format> is 2
+CREG	<n> is 0
+CGREG	<n> is 0
+CLIP	<n> is 0
+CMUT	<n> is 0
+CLVL	<level> is read from NV.
+CSSN	<n> is 0, <m> is 0

	Description of initial value
%PROTSEL	<n> is 0
+CMMS	<n> is 2
%CURC	<curc_status> is 0x00000003

21.6 Appendix 7 Examples of Show Mode

Query Mode: We can use “AT%SYSINFO?” to acquire system server domain and system mode. According to the parameter <srv_domain> and the parameter <sys_mode>, host software will achieve the mode which would be shown to the user.

<srv_domain>	<sys_mode>	shown
1	3	GSM
2	3	GPRS
3	3	GPRS
1	5	3G CS
2	5	3G PS
3	5	3G

Report Mode: We can get the parameter <sys_mode> by the command “%MODE”, and then get the parameter <stat> by the command “+CREG”(or “+CGREG”). Finally, host software can use them to determine the mode which would be shown to the user.

<sys_mode>	creg: <stat>	cgreg: <stat>	shown
3	reg(1, 5)	unreg(0, 2, 3, 4)	GSM
3	any	reg(1, 5)	GPRS
5	reg(1, 5)	unreg(0, 2, 3, 4)	3G CS
5	unreg(0, 3, 4)	reg(1, 5)	3G PS
5	reg(1, 5)	reg(1, 5)	3G

List of reference:

[1] 3GPP protocol 27.005-3d0

[2] 3GPP protocol 27.007-320

[3] ITU-T Recommendation V.25 ter V0025-TE.DOC

A Acronyms and Abbreviations

Abbreviations	Full spelling
TE	Terminal Equipment
MS	Mobile Station
SM	Short message
RSSI	Receive signal strength indicator
BER	Bit error rate
PLMN	Public land mobile network
RPLMN	Registered PLMN
URC	Unsolicited result code
DCS	Data coding scheme
DCE	Data Circuit Equipment
DTE	Data Terminal Equipment
CLIP	Call Line Identifier presentation
PDP	Packet Data Protocol
SCA	Service Center Address